

## Daily Direct Steer and Heifer Slaughter Cattle Summary

For Trade on:

Thursday, October 20, 2022

<a href="#">LM CT100</a>	<b>5-AREA</b>	<a href="#">LM CT109</a>
<b>Neg. Cash Volume:</b>	54,484	<b>Dressed Formula Vol:</b> 36,997
Live Steer Avg:	\$150.17	Steer/Heifer Avg: \$237.03
Live Heifer Avg:	\$149.75	<b>Dressed Neg. Grid Vol:</b> 3,249
Dressed Steer Avg:	\$235.77	Steer/Heifer Avg: \$233.05
Dressed Heifer Avg:	\$235.89	<b>TOTAL VOLUME:</b> 94,730
<a href="#">LM CT106</a>	<b>TOTAL WK TO DATE VOLUME:</b>	<b>266,372</b>
<b>Committed:</b>	<b>139,613</b>	<b>Delivered:</b> 67,381

<a href="#">LM CT118</a>	<b>TX-OK-NM</b>	<a href="#">LM CT109</a>
<b>Neg. Cash Volume:</b>	7,328	<b>Dressed Formula Vol:</b> 10,561
Live Steer Avg:	\$147.89	Steer/Heifer Avg: \$231.30
Live Heifer Avg:	\$148.00	<b>Dressed Neg. Grid Vol:</b> 0
Dressed Steer Avg:	N/A	Steer/Heifer Avg: N/A
Dressed Heifer Avg:	N/A	<b>TOTAL VOLUME:</b> 17,889
<a href="#">LM CT106</a>	<b>TOTAL WK TO DATE VOLUME:</b>	<b>73,277</b>
<b>Committed:</b>	<b>34,459</b>	<b>Delivered:</b> 19,504

<a href="#">LM CT121</a>	<b>KANSAS</b>	<a href="#">LM CT109</a>
<b>Neg. Cash Volume:</b>	9,286	<b>Dressed Formula Vol:</b> 9,786
Live Steer Avg:	\$148.00	Steer/Heifer Avg: \$235.90
Live Heifer Avg:	\$147.98	<b>Dressed Neg. Grid Vol:</b> 166
Dressed Steer Avg:	\$234.00	Steer/Heifer Avg: \$229.77
Dressed Heifer Avg:	\$236.00	<b>TOTAL VOLUME:</b> 19,238
<a href="#">LM CT106</a>	<b>TOTAL WK TO DATE VOLUME:</b>	<b>68,267</b>
<b>Committed:</b>	<b>35,405</b>	<b>Delivered:</b> 19,363

<a href="#">LM CT124</a>	<b>NEBRASKA</b>	<a href="#">LM CT109</a>
<b>Neg. Cash Volume:</b>	26,027	<b>Dressed Formula Vol:</b> 10,700
Live Steer Avg:	\$151.31	Steer/Heifer Avg: \$236.45
Live Heifer Avg:	\$151.38	<b>Dressed Neg. Grid Vol:</b> 2,028
Dressed Steer Avg:	\$235.79	Steer/Heifer Avg: \$232.14
Dressed Heifer Avg:	\$235.91	<b>TOTAL VOLUME:</b> 38,755
<a href="#">LM CT106</a>	<b>TOTAL WK TO DATE VOLUME:</b>	<b>66,609</b>
<b>Committed:</b>	<b>26,531</b>	<b>Delivered:</b> 14,521

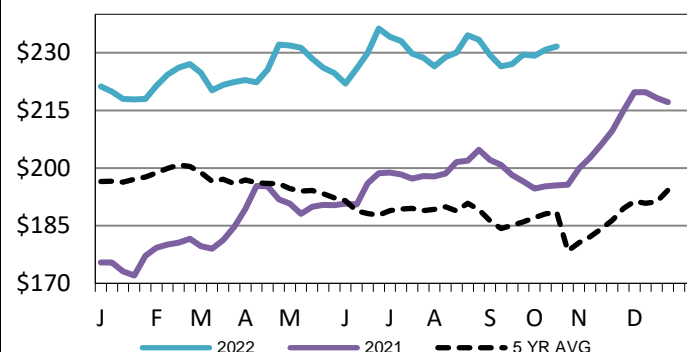
<a href="#">LM CT134</a>	<b>COLORADO</b>	<a href="#">LM CT109</a>
<b>Neg. Cash Volume:</b>	0	<b>Dressed Formula Vol:</b> 4,231
Live Steer Avg:	N/A	Steer/Heifer Avg: \$254.92
Live Heifer Avg:	N/A	<b>Dressed Neg. Grid Vol:</b> 235
Dressed Steer Avg:	N/A	Steer/Heifer Avg: \$235.47
Dressed Heifer Avg:	N/A	<b>TOTAL VOLUME:</b> 4,466
<a href="#">LM CT106</a>	<b>TOTAL WK TO DATE VOLUME:</b>	<b>15,572</b>
<b>Committed:</b>	<b>18,928</b>	<b>Delivered:</b> 4,212

<a href="#">LM CT137</a>	<b>IA-MN</b>	<a href="#">LM CT109</a>
<b>Neg. Cash Volume:</b>	11,843	<b>Dressed Formula Vol:</b> 1,836
Live Steer Avg:	\$150.79	Steer/Heifer Avg: \$238.80
Live Heifer Avg:	\$150.89	<b>Dressed Neg. Grid Vol:</b> 1,003
Dressed Steer Avg:	\$235.82	Steer/Heifer Avg: \$236.34
Dressed Heifer Avg:	\$235.74	<b>TOTAL VOLUME:</b> 14,682
<a href="#">LM CT106</a>	<b>TOTAL WK TO DATE VOLUME:</b>	<b>43,219</b>
<b>Committed:</b>	<b>24,290</b>	<b>Delivered:</b> 9,781

On Thursday in the Southern Plains negotiated cash trading was moderate on light to moderate demand. Compared to last week live purchases traded mostly 3.00 higher at 148.00. In Nebraska and the Western Cornbelt negotiated cash trading and demand were moderate. In Nebraska live purchases ranged from 150.00-152.00, compared to last week the bulk traded 3.00-4.00 higher from 151.00-152.00. Compared to last week dressed purchases traded mostly 4.00 higher at 236.00. In the Western Cornbelt compared to the last reported market on Wednesday live purchases traded steady to 2.00 higher from 150.00-152.00. Compared to last week dressed purchases traded mostly 4.00-6.00 higher at 236.00, on a light test.

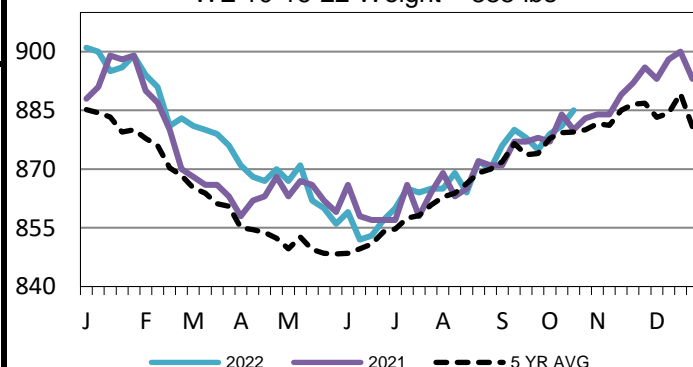
## Iowa-Minnesota Wkly Dress Steer Wtd Avg

WE 10-16-22 Price = \$231.66



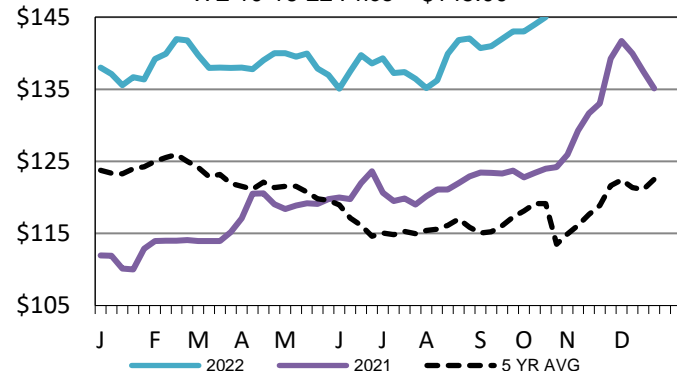
## 5-Area Formula Carcass Weight

WE 10-16-22 Weight = 885 lbs



## Kansas Weekly Live Steer Weighted Average

WE 10-16-22 Price = \$145.00



## USDA Livestock, Poultry and Grain Market News

St. Joseph, Missouri

Phone: 816-676-7000

[stjoe.lpgmn@ams.usda.gov](mailto:stjoe.lpgmn@ams.usda.gov)