

# Daily Direct Steer and Heifer Slaughter Cattle Summary

For Trade on:

Friday, September 30, 2022

<a href="#">LM CT100</a>	<b>5-AREA</b>	<a href="#">LM CT109</a>
<b>Neg. Cash Volume:</b>	5,613	<b>Dressed Formula Vol:</b> 44,352
<b>Live Steer Avg:</b>	\$146.75	<b>Steer/Heifer Avg:</b> \$233.45
<b>Live Heifer Avg:</b>	\$145.69	<b>Dressed Neg. Grid Vol:</b> 4,929
<b>Dressed Steer Avg:</b>	\$230.38	<b>Steer/Heifer Avg:</b> \$228.25
<b>Dressed Heifer Avg:</b>	N/A	<b>TOTAL VOLUME:</b> 54,894
<a href="#">LM CT106</a>	<b>TOTAL WK TO DATE VOLUME:</b>	<b>316,450</b>
<b>Committed:</b>	<b>66,901</b>	<b>Delivered:</b> 87,105

<a href="#">LM CT118</a>	<b>TX-OK-NM</b>	<a href="#">LM CT109</a>
<b>Neg. Cash Volume:</b>	89	<b>Dressed Formula Vol:</b> 12,370
<b>Live Steer Avg:</b>	N/A	<b>Steer/Heifer Avg:</b> \$226.95
<b>Live Heifer Avg:</b>	N/A	<b>Dressed Neg. Grid Vol:</b> 0
<b>Dressed Steer Avg:</b>	N/A	<b>Steer/Heifer Avg:</b> N/A
<b>Dressed Heifer Avg:</b>	N/A	<b>TOTAL VOLUME:</b> 12,459
<a href="#">LM CT106</a>	<b>TOTAL WK TO DATE VOLUME:</b>	<b>80,045</b>
<b>Committed:</b>	<b>21,895</b>	<b>Delivered:</b> 15,038

<a href="#">LM CT121</a>	<b>KANSAS</b>	<a href="#">LM CT109</a>
<b>Neg. Cash Volume:</b>	118	<b>Dressed Formula Vol:</b> 15,133
<b>Live Steer Avg:</b>	\$143.00	<b>Steer/Heifer Avg:</b> \$232.81
<b>Live Heifer Avg:</b>	N/A	<b>Dressed Neg. Grid Vol:</b> 1,697
<b>Dressed Steer Avg:</b>	\$228.00	<b>Steer/Heifer Avg:</b> \$225.01
<b>Dressed Heifer Avg:</b>	N/A	<b>TOTAL VOLUME:</b> 16,948
<a href="#">LM CT106</a>	<b>TOTAL WK TO DATE VOLUME:</b>	<b>85,703</b>
<b>Committed:</b>	<b>14,287</b>	<b>Delivered:</b> 23,387

<a href="#">LM CT124</a>	<b>NEBRASKA</b>	<a href="#">LM CT109</a>
<b>Neg. Cash Volume:</b>	534	<b>Dressed Formula Vol:</b> 8,008
<b>Live Steer Avg:</b>	\$140.00	<b>Steer/Heifer Avg:</b> \$240.95
<b>Live Heifer Avg:</b>	N/A	<b>Dressed Neg. Grid Vol:</b> 920
<b>Dressed Steer Avg:</b>	\$230.25	<b>Steer/Heifer Avg:</b> \$228.30
<b>Dressed Heifer Avg:</b>	N/A	<b>TOTAL VOLUME:</b> 9,462
<a href="#">LM CT106</a>	<b>TOTAL WK TO DATE VOLUME:</b>	<b>79,062</b>
<b>Committed:</b>	<b>11,488</b>	<b>Delivered:</b> 25,829

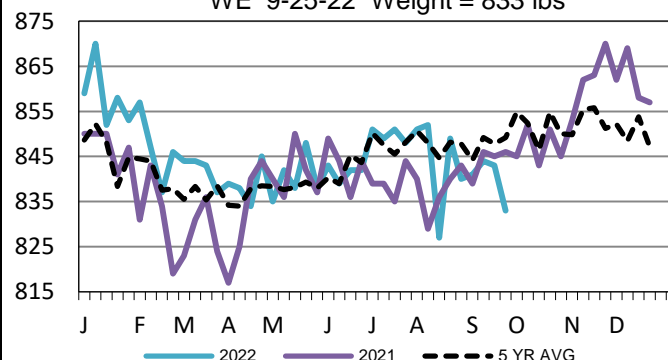
<a href="#">LM CT134</a>	<b>COLORADO</b>	<a href="#">LM CT109</a>
<b>Neg. Cash Volume:</b>	0	<b>Dressed Formula Vol:</b> 6,530
<b>Live Steer Avg:</b>	N/A	<b>Steer/Heifer Avg:</b> \$235.14
<b>Live Heifer Avg:</b>	N/A	<b>Dressed Neg. Grid Vol:</b> 965
<b>Dressed Steer Avg:</b>	N/A	<b>Steer/Heifer Avg:</b> \$229.70
<b>Dressed Heifer Avg:</b>	N/A	<b>TOTAL VOLUME:</b> 7,495
<a href="#">LM CT106</a>	<b>TOTAL WK TO DATE VOLUME:</b>	<b>25,156</b>
<b>Committed:</b>	<b>7,478</b>	<b>Delivered:</b> 6,135

<a href="#">LM CT137</a>	<b>IA-MN</b>	<a href="#">LM CT109</a>
<b>Neg. Cash Volume:</b>	4,872	<b>Dressed Formula Vol:</b> 2,568
<b>Live Steer Avg:</b>	\$149.23	<b>Steer/Heifer Avg:</b> \$241.05
<b>Live Heifer Avg:</b>	\$145.69	<b>Dressed Neg. Grid Vol:</b> 1,547
<b>Dressed Steer Avg:</b>	\$230.67	<b>Steer/Heifer Avg:</b> \$231.06
<b>Dressed Heifer Avg:</b>	N/A	<b>TOTAL VOLUME:</b> 8,987
<a href="#">LM CT106</a>	<b>TOTAL WK TO DATE VOLUME:</b>	<b>47,354</b>
<b>Committed:</b>	<b>11,753</b>	<b>Delivered:</b> 16,716

For Friday negotiated cash trading in the Western Cornbelt was limited on light demand. In the Southern Plains and Nebraska negotiated cash trading was mostly inactive on very light demand. Not enough purchases in any price range in any region for a full market trend. Wednesday was the last reported market in these regions. In the Southern Plains live purchases traded at 143.00. In Nebraska live and dressed purchases traded from 144.00-145.00 and from 228.00-233.00, respectively. In the Western Cornbelt live and dressed purchases traded at 145.00 and at 228.00, respectively.

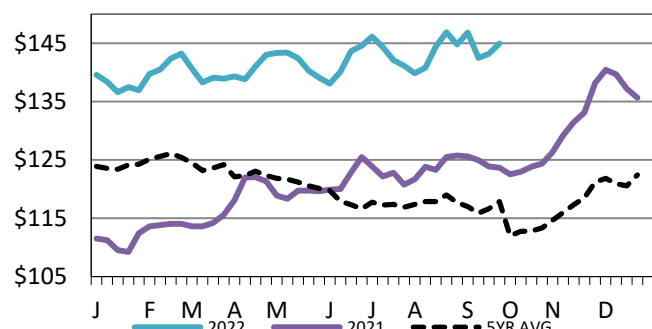
## TX-OK-NM Formula Carcass Weights

WE 9-25-22 Weight = 833 lbs



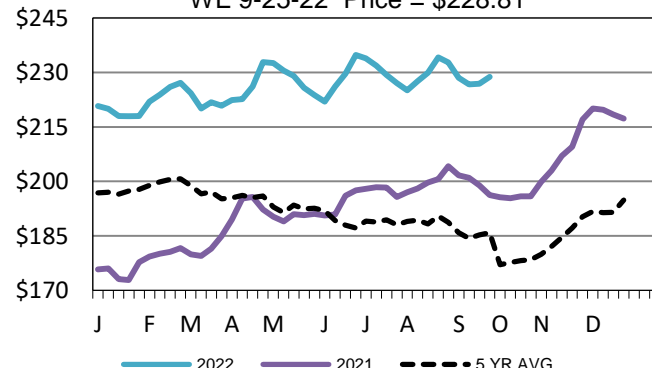
## 5-Area Live Steer Weighted Average

WE 9-25-22 Price = \$144.94



## Nebraska Weekly Dressed Steer Weighted Avg

WE 9-25-22 Price = \$228.81



## USDA Livestock, Poultry and Grain Market News

St. Joseph, Missouri

Phone: 816-676-7000

[stjoe.lpgmn@ams.usda.gov](mailto:stjoe.lpgmn@ams.usda.gov)