

Daily Direct Steer and Heifer Slaughter Cattle Summary

For Trade on:

Wednesday, September 28, 2022

LM CT100	5-AREA	LM CT109
Neg. Cash Volume:	52,852	Dressed Formula Vol: 34,723
Live Steer Avg:	\$144.89	Steer/Heifer Avg: \$229.74
Live Heifer Avg:	\$144.51	Dressed Neg. Grid Vol: 5,615
Dressed Steer Avg:	\$229.33	Steer/Heifer Avg: \$228.36
Dressed Heifer Avg:	\$229.13	TOTAL VOLUME: 93,190
LM CT106	TOTAL WK TO DATE VOLUME:	203,000
Committed:	94,556	Delivered: 68,708

LM CT118	TX-OK-NM	LM CT109
Neg. Cash Volume:	1,890	Dressed Formula Vol: 15,182
Live Steer Avg:	\$143.00	Steer/Heifer Avg: \$227.60
Live Heifer Avg:	\$143.00	Dressed Neg. Grid Vol: 86
Dressed Steer Avg:	N/A	Steer/Heifer Avg: \$214.93
Dressed Heifer Avg:	N/A	TOTAL VOLUME: 17,158
LM CT106	TOTAL WK TO DATE VOLUME:	51,865
Committed:	10,919	Delivered: 15,225

LM CT121	KANSAS	LM CT109
Neg. Cash Volume:	2,279	Dressed Formula Vol: 11,826
Live Steer Avg:	\$143.00	Steer/Heifer Avg: \$229.33
Live Heifer Avg:	\$143.00	Dressed Neg. Grid Vol: 2,204
Dressed Steer Avg:	\$228.00	Steer/Heifer Avg: \$224.97
Dressed Heifer Avg:	N/A	TOTAL VOLUME: 16,309
LM CT106	TOTAL WK TO DATE VOLUME:	56,586
Committed:	16,666	Delivered: 17,838

LM CT124	NEBRASKA	LM CT109
Neg. Cash Volume:	30,987	Dressed Formula Vol: 4,005
Live Steer Avg:	\$145.03	Steer/Heifer Avg: \$237.84
Live Heifer Avg:	\$144.68	Dressed Neg. Grid Vol: 1,536
Dressed Steer Avg:	\$229.29	Steer/Heifer Avg: \$228.51
Dressed Heifer Avg:	\$229.74	TOTAL VOLUME: 36,528
LM CT106	TOTAL WK TO DATE VOLUME:	52,175
Committed:	43,169	Delivered: 18,468

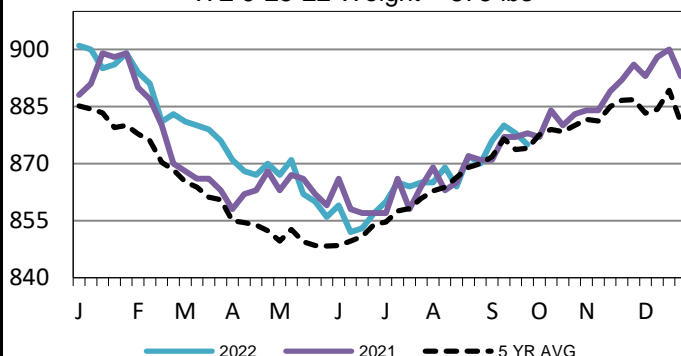
LM CT134	COLORADO	LM CT109
Neg. Cash Volume:	0	Dressed Formula Vol: 2,087
Live Steer Avg:	N/A	Steer/Heifer Avg: \$229.07
Live Heifer Avg:	N/A	Dressed Neg. Grid Vol: 307
Dressed Steer Avg:	N/A	Steer/Heifer Avg: \$229.42
Dressed Heifer Avg:	N/A	TOTAL VOLUME: 2,394
LM CT106	TOTAL WK TO DATE VOLUME:	13,622
Committed:	3,550	Delivered: 7,192

LM CT137	IA-MN	LM CT109
Neg. Cash Volume:	17,786	Dressed Formula Vol: 1,623
Live Steer Avg:	\$145.12	Steer/Heifer Avg: \$233.59
Live Heifer Avg:	\$145.02	Dressed Neg. Grid Vol: 1,561
Dressed Steer Avg:	\$229.66	Steer/Heifer Avg: \$234.30
Dressed Heifer Avg:	\$228.00	TOTAL VOLUME: 20,970
LM CT106	TOTAL WK TO DATE VOLUME:	29,040
Committed:	20,252	Delivered: 9,985

Wednesday in Nebraska cash trading was active on very good demand. Live purchases ranged from 144.00-146.00, compared to last week the bulk of live purchases traded steady from 144.00-145.00, and dressed purchases traded steady to 1.00 higher from 228.00-233.00. In the Western Cornbelt negotiated cash trading was moderate on good demand. Compared to last week live purchases traded steady to 3.00 lower at 145.00 and dressed purchases traded unevenly steady at 228.00. In the Southern Plains negotiated cash trading was limited on light demand. A few live purchases traded steady at 143.00, when compared to the last reported market on Tuesday.

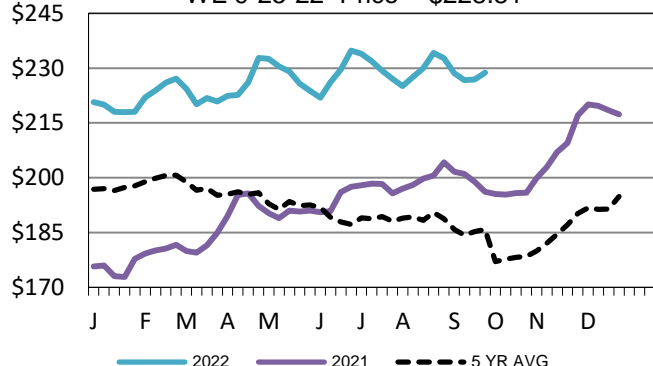
5-Area Formula Carcass Weight

WE 9-25-22 Weight = 875 lbs



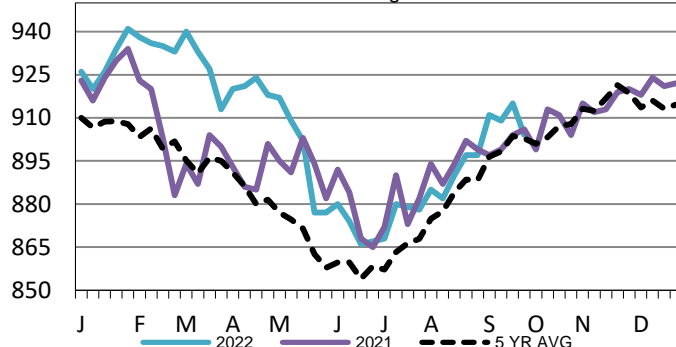
Nebraska Weekly DressedSteer Weighted Avg

WE 9-25-22 Price = \$228.81



Nebraska Formula Carcass Weights

WE 9-25-22 Weight = 904 lbs



USDA Livestock, Poultry and Grain Market News

St. Joseph, Missouri

Phone: 816-676-7000

stjoe.lpgmn@ams.usda.gov