

Daily Direct Steer and Heifer Slaughter Cattle Summary

For Trade on:

Tuesday, September 27, 2022

LM CT100	5-AREA	LM CT109
Neg. Cash Volume:	13,562	Dressed Formula Vol: 40,341
Live Steer Avg:	\$143.28	Steer/Heifer Avg: \$232.94
Live Heifer Avg:	\$143.47	Dressed Neg. Grid Vol: 2,024
Dressed Steer Avg:	\$227.92	Steer/Heifer Avg: \$229.88
Dressed Heifer Avg:	\$228.00	TOTAL VOLUME: 55,927
LM CT106	TOTAL WK TO DATE VOLUME:	109,810
Committed:	87,782	Delivered: 76,895

LM CT118	TX-OK-NM	LM CT109
Neg. Cash Volume:	4,180	Dressed Formula Vol: 15,228
Live Steer Avg:	\$142.82	Steer/Heifer Avg: \$228.66
Live Heifer Avg:	\$143.00	Dressed Neg. Grid Vol: 0
Dressed Steer Avg:	N/A	Steer/Heifer Avg: N/A
Dressed Heifer Avg:	N/A	TOTAL VOLUME: 19,408
LM CT106	TOTAL WK TO DATE VOLUME:	34,707
Committed:	16,051	Delivered: 19,047

LM CT121	KANSAS	LM CT109
Neg. Cash Volume:	5,409	Dressed Formula Vol: 10,372
Live Steer Avg:	\$143.00	Steer/Heifer Avg: \$231.25
Live Heifer Avg:	\$143.00	Dressed Neg. Grid Vol: 797
Dressed Steer Avg:	N/A	Steer/Heifer Avg: \$226.28
Dressed Heifer Avg:	N/A	TOTAL VOLUME: 16,578
LM CT106	TOTAL WK TO DATE VOLUME:	40,277
Committed:	36,387	Delivered: 21,006

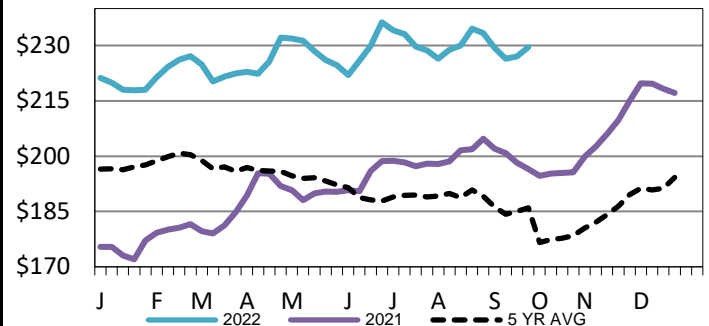
LM CT124	NEBRASKA	LM CT109
Neg. Cash Volume:	941	Dressed Formula Vol: 4,388
Live Steer Avg:	N/A	Steer/Heifer Avg: \$240.83
Live Heifer Avg:	\$144.00	Dressed Neg. Grid Vol: 260
Dressed Steer Avg:	\$228.00	Steer/Heifer Avg: \$232.98
Dressed Heifer Avg:	N/A	TOTAL VOLUME: 5,589
LM CT106	TOTAL WK TO DATE VOLUME:	15,737
Committed:	15,140	Delivered: 21,351

LM CT134	COLORADO	LM CT109
Neg. Cash Volume:	0	Dressed Formula Vol: 8,564
Live Steer Avg:	N/A	Steer/Heifer Avg: \$238.87
Live Heifer Avg:	N/A	Dressed Neg. Grid Vol: 90
Dressed Steer Avg:	N/A	Steer/Heifer Avg: \$229.44
Dressed Heifer Avg:	N/A	TOTAL VOLUME: 8,654
LM CT106	TOTAL WK TO DATE VOLUME:	11,228
Committed:	12,516	Delivered: 7,255

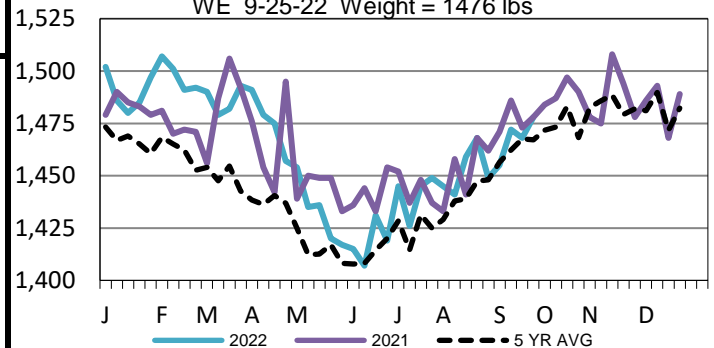
LM CT137	IA-MN	LM CT109
Neg. Cash Volume:	3,032	Dressed Formula Vol: 1,889
Live Steer Avg:	\$144.82	Steer/Heifer Avg: \$231.51
Live Heifer Avg:	\$145.00	Dressed Neg. Grid Vol: 877
Dressed Steer Avg:	\$227.80	Steer/Heifer Avg: \$232.28
Dressed Heifer Avg:	\$228.00	TOTAL VOLUME: 5,798
LM CT106	TOTAL WK TO DATE VOLUME:	8,070
Committed:	7,688	Delivered: 8,236

For Tuesday in the Plains cash trading was slow on moderate demand. Compared to last week live purchases traded steady at 143.00, on light movement. In Cornbelt cash trading was slow on light demand. A few live purchases traded at 145.00. However, not enough purchases for a market trend. For the previous week live and dressed purchases traded from 145.00-148.00 and from 227.00-243.00, respectively. In Nebraska negotiated cash trading was mostly inactive on light demand. Not enough purchases for a market trend. For prior week in Nebraska live and dressed purchases traded from 144.00-145.00 and from 228.00-232.00, respectively.

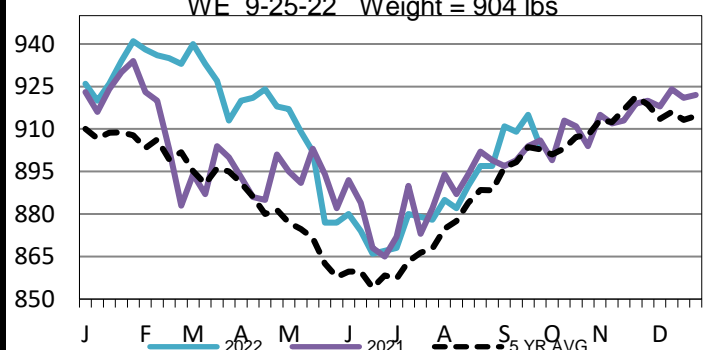
Iowa-Minnesota Wkly Dress Steer Wtd Avg
WE 9-25-22 Price = \$229.57



5-Area Negotiated Cash Live Steer Weights
WE 9-25-22 Weight = 1476 lbs



Nebraska Formula Carcass Weights
WE 9-25-22 Weight = 904 lbs



USDA Livestock, Poultry and Grain Market News

St. Joseph, Missouri

Phone: 816-676-7000

stjoe.lpgmn@ams.usda.gov