

Daily Direct Steer and Heifer Slaughter Cattle Summary

For Trade on:

Wednesday, September 21, 2022

LM CT100	5-AREA	LM CT109
Neg. Cash Volume:	5,930	Dressed Formula Vol: 29,708
Live Steer Avg:	\$144.52	Steer/Heifer Avg: \$228.38
Live Heifer Avg:	\$144.97	Dressed Neg. Grid Vol: 2,986
Dressed Steer Avg:	\$227.55	Steer/Heifer Avg: \$229.21
Dressed Heifer Avg:	\$230.83	TOTAL VOLUME: 38,624
LM CT106	TOTAL WK TO DATE VOLUME:	154,473
Committed:	66,325	Delivered: 73,067

LM CT118	TX-OK-NM	LM CT109
Neg. Cash Volume:	0	Dressed Formula Vol: 8,630
Live Steer Avg:	N/A	Steer/Heifer Avg: \$226.64
Live Heifer Avg:	N/A	Dressed Neg. Grid Vol: 0
Dressed Steer Avg:	N/A	Steer/Heifer Avg: N/A
Dressed Heifer Avg:	N/A	TOTAL VOLUME: 8,630
LM CT106	TOTAL WK TO DATE VOLUME:	40,481
Committed:	14,082	Delivered: 16,404

LM CT121	KANSAS	LM CT109
Neg. Cash Volume:	741	Dressed Formula Vol: 6,886
Live Steer Avg:	\$143.00	Steer/Heifer Avg: \$227.08
Live Heifer Avg:	\$143.00	Dressed Neg. Grid Vol: 981
Dressed Steer Avg:	N/A	Steer/Heifer Avg: \$223.27
Dressed Heifer Avg:	N/A	TOTAL VOLUME: 8,608
LM CT106	TOTAL WK TO DATE VOLUME:	54,026
Committed:	16,717	Delivered: 20,634

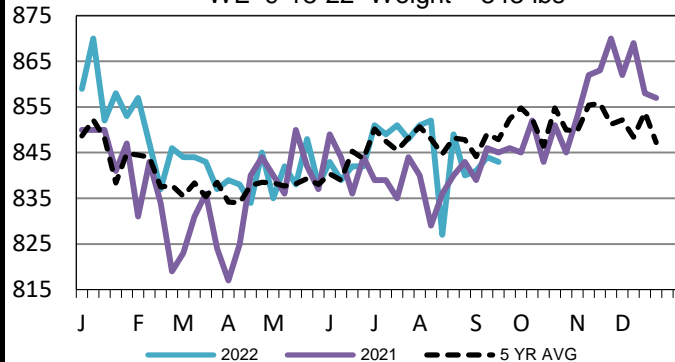
LM CT124	NEBRASKA	LM CT109
Neg. Cash Volume:	2,607	Dressed Formula Vol: 10,479
Live Steer Avg:	\$144.69	Steer/Heifer Avg: \$229.59
Live Heifer Avg:	\$145.00	Dressed Neg. Grid Vol: 974
Dressed Steer Avg:	\$227.60	Steer/Heifer Avg: \$232.73
Dressed Heifer Avg:	\$229.00	TOTAL VOLUME: 14,060
LM CT106	TOTAL WK TO DATE VOLUME:	29,268
Committed:	27,868	Delivered: 19,778

LM CT134	COLORADO	LM CT109
Neg. Cash Volume:	0	Dressed Formula Vol: 1,561
Live Steer Avg:	N/A	Steer/Heifer Avg: \$233.17
Live Heifer Avg:	N/A	Dressed Neg. Grid Vol: 148
Dressed Steer Avg:	N/A	Steer/Heifer Avg: \$237.36
Dressed Heifer Avg:	N/A	TOTAL VOLUME: 1,709
LM CT106	TOTAL WK TO DATE VOLUME:	13,723
Committed:	2,375	Delivered: 8,469

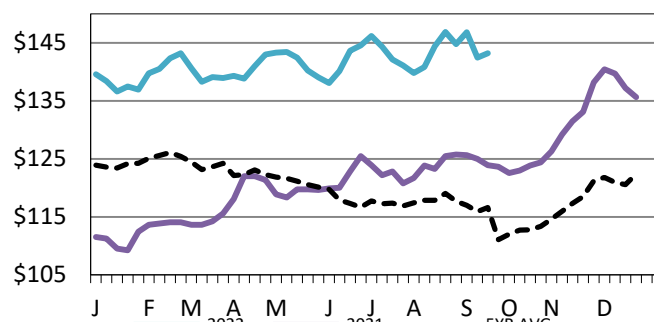
LM CT137	IA-MN	LM CT109
Neg. Cash Volume:	2,582	Dressed Formula Vol: 2,192
Live Steer Avg:	\$145.10	Steer/Heifer Avg: \$230.27
Live Heifer Avg:	\$145.08	Dressed Neg. Grid Vol: 919
Dressed Steer Avg:	\$227.40	Steer/Heifer Avg: \$231.11
Dressed Heifer Avg:	\$232.00	TOTAL VOLUME: 5,693
LM CT106	TOTAL WK TO DATE VOLUME:	13,385
Committed:	5,283	Delivered: 7,782

Wednesday cash trading was limited on light demand in Nebraska and Cornbelt. In both regions a few live purchases traded at 145.00. However, not enough live or dressed for a market trend in either region. For the prior week in Nebraska live and dressed traded at 143.00 and from 226.00-227.00. For the previous week in the Cornbelt live and dressed purchases traded from 143.00-145.00 and at 226.00. In Kansas cash trading was mostly inactive on light demand. In the Texas Panhandle cash trading was at a standstill. Not enough purchases in either region for a market trend. Last week in the Southern Plains live purchases traded at 142.00.

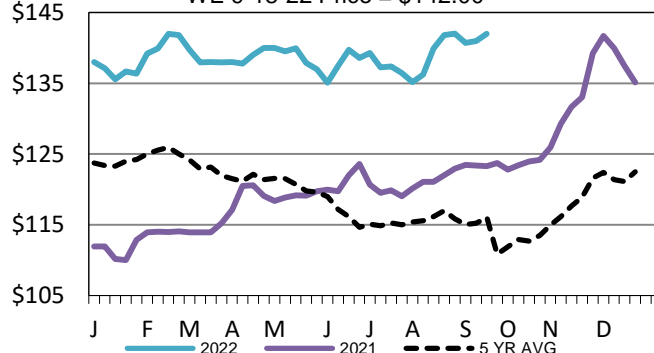
TX-OK-NM Formula Carcass Weights
WE 9-18-22 Weight = 843 lbs



5-Area Live Steer Weighted Average
WE 9-18-22 Price = \$143.19



Kansas Weekly Live Steer Weighted Average
WE 9-18-22 Price = \$142.00



USDA Livestock, Poultry and Grain Market News

St. Joseph, Missouri

Phone: 816-676-7000

stjoe.lpgmn@ams.usda.gov