

Daily Direct Steer and Heifer Slaughter Cattle Summary

For Trade on:

Tuesday, September 20, 2022

LM CT100	5-AREA	LM CT109
Neg. Cash Volume:	2,632	Dressed Formula Vol: 44,946
Live Steer Avg:	\$145.44	Steer/Heifer Avg: \$231.31
Live Heifer Avg:	\$145.00	Dressed Neg. Grid Vol: 5,620
Dressed Steer Avg:	\$229.71	Steer/Heifer Avg: \$231.75
Dressed Heifer Avg:	\$227.00	TOTAL VOLUME: 53,198
LM CT106	TOTAL WK TO DATE VOLUME:	115,849
Committed:	56,126	Delivered: 72,884

LM CT118	TX-OK-NM	LM CT109
Neg. Cash Volume:	0	Dressed Formula Vol: 11,116
Live Steer Avg:	N/A	Steer/Heifer Avg: \$227.88
Live Heifer Avg:	N/A	Dressed Neg. Grid Vol: 0
Dressed Steer Avg:	N/A	Steer/Heifer Avg: N/A
Dressed Heifer Avg:	N/A	TOTAL VOLUME: 11,116
LM CT106	TOTAL WK TO DATE VOLUME:	31,851
Committed:	7,461	Delivered: 18,410

LM CT121	KANSAS	LM CT109
Neg. Cash Volume:	0	Dressed Formula Vol: 18,130
Live Steer Avg:	N/A	Steer/Heifer Avg: \$227.70
Live Heifer Avg:	N/A	Dressed Neg. Grid Vol: 2,279
Dressed Steer Avg:	N/A	Steer/Heifer Avg: \$226.72
Dressed Heifer Avg:	N/A	TOTAL VOLUME: 20,409
LM CT106	TOTAL WK TO DATE VOLUME:	45,418
Committed:	23,520	Delivered: 19,761

LM CT124	NEBRASKA	LM CT109
Neg. Cash Volume:	329	Dressed Formula Vol: 6,434
Live Steer Avg:	N/A	Steer/Heifer Avg: \$239.19
Live Heifer Avg:	N/A	Dressed Neg. Grid Vol: 1,852
Dressed Steer Avg:	\$232.00	Steer/Heifer Avg: \$236.70
Dressed Heifer Avg:	N/A	TOTAL VOLUME: 8,615
LM CT106	TOTAL WK TO DATE VOLUME:	15,208
Committed:	13,817	Delivered: 19,520

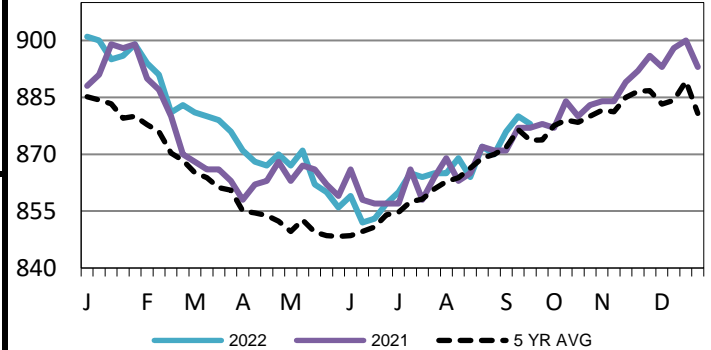
LM CT134	COLORADO	LM CT109
Neg. Cash Volume:	0	Dressed Formula Vol: 7,854
Live Steer Avg:	N/A	Steer/Heifer Avg: \$238.33
Live Heifer Avg:	N/A	Dressed Neg. Grid Vol: 37
Dressed Steer Avg:	N/A	Steer/Heifer Avg: \$232.14
Dressed Heifer Avg:	N/A	TOTAL VOLUME: 7,891
LM CT106	TOTAL WK TO DATE VOLUME:	12,014
Committed:	2,796	Delivered: 7,580

LM CT137	IA-MN	LM CT109
Neg. Cash Volume:	2,303	Dressed Formula Vol: 1,630
Live Steer Avg:	\$145.44	Steer/Heifer Avg: \$232.98
Live Heifer Avg:	\$145.00	Dressed Neg. Grid Vol: 1,492
Dressed Steer Avg:	\$227.96	Steer/Heifer Avg: \$233.58
Dressed Heifer Avg:	\$145.00	TOTAL VOLUME: 5,425
LM CT106	TOTAL WK TO DATE VOLUME:	7,692
Committed:	8,532	Delivered: 7,613

For Tuesday negotiated cash trading was at a standstill in the Southern Plains. In the Western Cornbelt negotiated cash trading was limited on light demand. In Nebraska negotiated cash trading was mostly inactive on very light demand. Not enough purchases for a market trend in any region. Last week in the Southern Plains live purchases traded at 142.00. For the prior week in Nebraska live and dressed purchases traded at 143.00 and from 226.00-227.00, respectively. For the previous week in the Western Cornbelt live and dressed purchases traded from 143.00-145.00 and at 226.00, respectively.

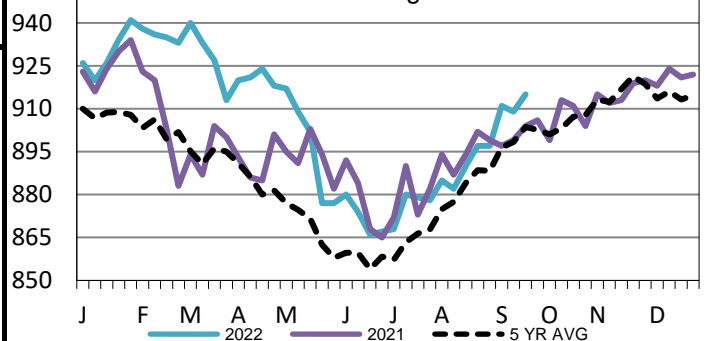
5-Area Formula Carcass Weight

WE 9-18-22 Weight = 878 lbs



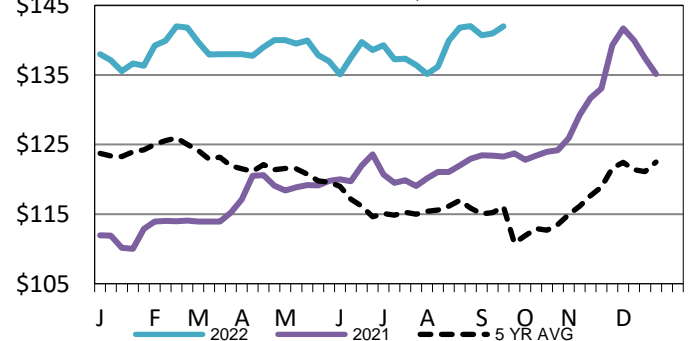
Nebraska Formula Carcass Weights

WE 9-18-22 Weight = 915 lbs



Kansas Weekly Live Steer Weighted Average

WE 9-18-22 Price = \$142.00



USDA Livestock, Poultry and Grain Market News

St. Joseph, Missouri

Phone: 816-676-7000

stjoe.lpgmn@ams.usda.gov