

## Daily Direct Steer and Heifer Slaughter Cattle Summary

For Trade on:

Monday, September 19, 2022

<a href="#">LM CT100</a>	<b>5-AREA</b>	<a href="#">LM CT109</a>
Neg. Cash Volume: 300		Dressed Formula Vol: 58,698
Live Steer Avg: N/A		Steer/Heifer Avg: \$225.77
Live Heifer Avg: N/A		Dressed Neg. Grid Vol: 3,653
Dressed Steer Avg: N/A		Steer/Heifer Avg: \$230.52
Dressed Heifer Avg: N/A		<b>TOTAL VOLUME: 62,651</b>
<a href="#">LM CT106</a>	<b>TOTAL WK TO DATE VOLUME: 62,651</b>	
Committed: 52,624	Delivered: 80,176	

<a href="#">LM CT118</a>	<b>TX-OK-NM</b>	<a href="#">LM CT109</a>
Neg. Cash Volume: 0		Dressed Formula Vol: 20,375
Live Steer Avg: N/A		Steer/Heifer Avg: \$223.01
Live Heifer Avg: N/A		Dressed Neg. Grid Vol: 360
Dressed Steer Avg: N/A		Steer/Heifer Avg: \$223.11
Dressed Heifer Avg: N/A		<b>TOTAL VOLUME: 20,735</b>
<a href="#">LM CT106</a>	<b>TOTAL WK TO DATE VOLUME: 20,735</b>	
Committed: 12,479	Delivered: 22,912	

<a href="#">LM CT121</a>	<b>KANSAS</b>	<a href="#">LM CT109</a>
Neg. Cash Volume: 0		Dressed Formula Vol: 23,558
Live Steer Avg: N/A		Steer/Heifer Avg: \$225.72
Live Heifer Avg: N/A		Dressed Neg. Grid Vol: 1,451
Dressed Steer Avg: N/A		Steer/Heifer Avg: \$226.35
Dressed Heifer Avg: N/A		<b>TOTAL VOLUME: 25,009</b>
<a href="#">LM CT106</a>	<b>TOTAL WK TO DATE VOLUME: 25,009</b>	
Committed: 14,359	Delivered: 21,739	

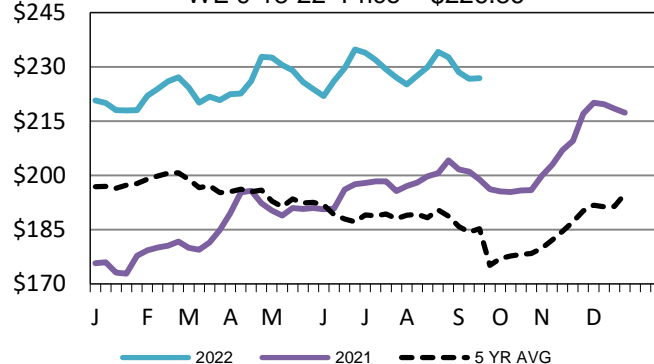
<a href="#">LM CT124</a>	<b>NEBRASKA</b>	<a href="#">LM CT109</a>
Neg. Cash Volume: 0		Dressed Formula Vol: 5,296
Live Steer Avg: N/A		Steer/Heifer Avg: \$231.28
Live Heifer Avg: N/A		Dressed Neg. Grid Vol: 1,297
Dressed Steer Avg: N/A		Steer/Heifer Avg: \$235.82
Dressed Heifer Avg: N/A		<b>TOTAL VOLUME: 6,593</b>
<a href="#">LM CT106</a>	<b>TOTAL WK TO DATE VOLUME: 6,593</b>	
Committed: 9,212	Delivered: 18,750	

<a href="#">LM CT134</a>	<b>COLORADO</b>	<a href="#">LM CT109</a>
Neg. Cash Volume: 0		Dressed Formula Vol: 4,123
Live Steer Avg: N/A		Steer/Heifer Avg: \$228.69
Live Heifer Avg: N/A		Dressed Neg. Grid Vol: 0
Dressed Steer Avg: N/A		Steer/Heifer Avg: N/A
Dressed Heifer Avg: N/A		<b>TOTAL VOLUME: 4,123</b>
<a href="#">LM CT106</a>	<b>TOTAL WK TO DATE VOLUME: 4,123</b>	
Committed: 9,886	Delivered: 6,552	

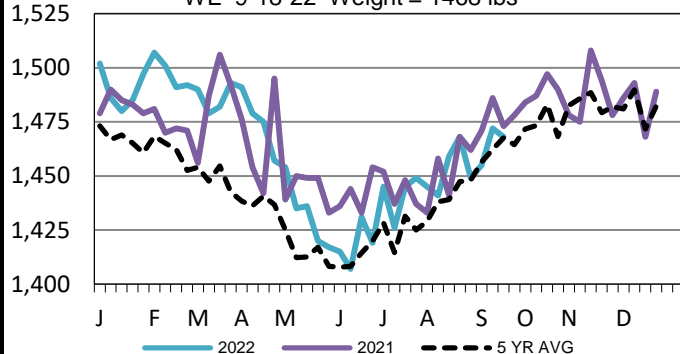
<a href="#">LM CT137</a>	<b>IA-MN</b>	<a href="#">LM CT109</a>
Neg. Cash Volume: 300		Dressed Formula Vol: 1,422
Live Steer Avg: \$147.00		Steer/Heifer Avg: \$237.42
Live Heifer Avg: N/A		Dressed Neg. Grid Vol: 545
Dressed Steer Avg: N/A		Steer/Heifer Avg: \$233.91
Dressed Heifer Avg: N/A		<b>TOTAL VOLUME: 2,267</b>
<a href="#">LM CT106</a>	<b>TOTAL WK TO DATE VOLUME: 2,267</b>	
Committed: 6,688	Delivered: 10,223	

For Monday negotiated cash trading was at a standstill in the Southern Plains and Nebraska. In the Western Cornbelt negotiated cash trading was mostly inactive on very light demand. Not enough purchases for a market trend. Last week in the Southern Plains live purchases traded at 142.00. For the prior week in Nebraska live and dressed purchases traded at 143.00 and from 226.00-227.00, respectively. For the previous week in the Western Cornbelt live and dressed purchases traded from 143.00-145.00 and at 226.00, respectively.

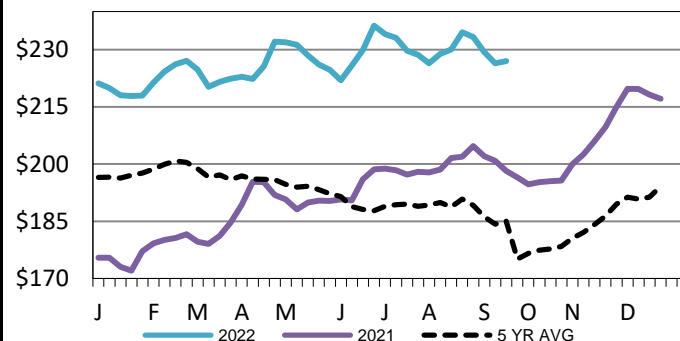
**Nebraska Weekly Dressed Steer Weighted Avg**  
WE 9-18-22 Price = \$226.86



**5-Area Negotiated Cash Live Steer Weights**  
WE 9-18-22 Weight = 1468 lbs



**Iowa-Minnesota Wkly Dress Steer Wtd Avg**  
WE 9-18-22 Price = \$227.03



## USDA Livestock, Poultry and Grain Market News

St. Joseph, Missouri

Phone: 816-676-7000

[stjoe.lpgmn@ams.usda.gov](mailto:stjoe.lpgmn@ams.usda.gov)