

Daily Direct Steer and Heifer Slaughter Cattle Summary

For Trade on:

Tuesday, September 06, 2022

LM CT100	5-AREA	LM CT109
Neg. Cash Volume: 262	Dressed Formula Vol: 51,554	
Live Steer Avg: N/A	Steer/Heifer Avg: \$230.77	
Live Heifer Avg: N/A	Dressed Neg. Grid Vol: 4,356	
Dressed Steer Avg: N/A	Steer/Heifer Avg: \$233.46	
Dressed Heifer Avg: N/A	TOTAL VOLUME: 56,172	
LM CT106	TOTAL WK TO DATE VOLUME: 56,172	
Committed: 65,236	Delivered: 78,965	

LM CT118	TX-OK-NM	LM CT109
Neg. Cash Volume: 0	Dressed Formula Vol: 12,963	
Live Steer Avg: N/A	Steer/Heifer Avg: \$226.62	
Live Heifer Avg: N/A	Dressed Neg. Grid Vol: 37	
Dressed Steer Avg: N/A	Steer/Heifer Avg: \$226.74	
Dressed Heifer Avg: N/A	TOTAL VOLUME: 13,000	
LM CT106	TOTAL WK TO DATE VOLUME: 13,000	
Committed: 18,069	Delivered: 25,495	

LM CT121	KANSAS	LM CT109
Neg. Cash Volume: 0	Dressed Formula Vol: 23,853	
Live Steer Avg: N/A	Steer/Heifer Avg: \$229.96	
Live Heifer Avg: N/A	Dressed Neg. Grid Vol: 799	
Dressed Steer Avg: N/A	Steer/Heifer Avg: \$229.30	
Dressed Heifer Avg: N/A	TOTAL VOLUME: 24,652	
LM CT106	TOTAL WK TO DATE VOLUME: 24,652	
Committed: 13,998	Delivered: 18,870	

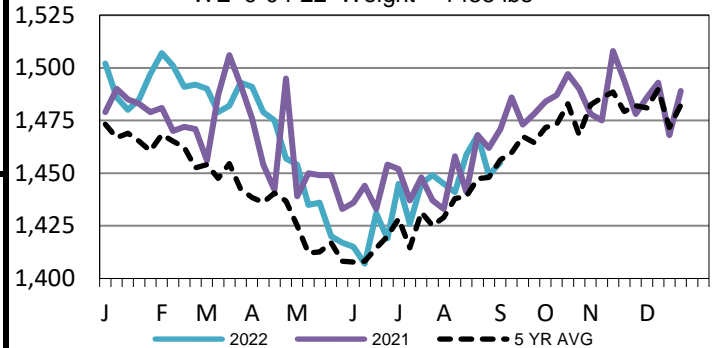
LM CT124	NEBRASKA	LM CT109
Neg. Cash Volume: 187	Dressed Formula Vol: 7,556	
Live Steer Avg: N/A	Steer/Heifer Avg: \$236.93	
Live Heifer Avg: N/A	Dressed Neg. Grid Vol: 2,589	
Dressed Steer Avg: N/A	Steer/Heifer Avg: \$234.48	
Dressed Heifer Avg: N/A	TOTAL VOLUME: 10,332	
LM CT106	TOTAL WK TO DATE VOLUME: 10,332	
Committed: 17,072	Delivered: 17,860	

LM CT134	COLORADO	LM CT109
Neg. Cash Volume: 0	Dressed Formula Vol: 5,441	
Live Steer Avg: N/A	Steer/Heifer Avg: \$232.39	
Live Heifer Avg: N/A	Dressed Neg. Grid Vol: 26	
Dressed Steer Avg: N/A	Steer/Heifer Avg: \$232.80	
Dressed Heifer Avg: N/A	TOTAL VOLUME: 5,467	
LM CT106	TOTAL WK TO DATE VOLUME: 5,467	
Committed: 9,663	Delivered: 8,138	

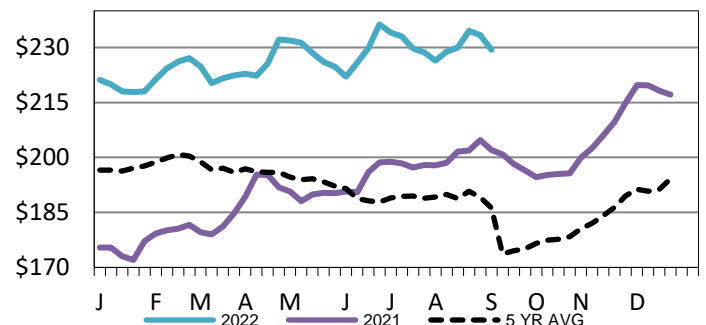
LM CT137	IA-MN	LM CT109
Neg. Cash Volume: 75	Dressed Formula Vol: 1,833	
Live Steer Avg: N/A	Steer/Heifer Avg: \$241.08	
Live Heifer Avg: N/A	Dressed Neg. Grid Vol: 905	
Dressed Steer Avg: N/A	Steer/Heifer Avg: \$234.52	
Dressed Heifer Avg: N/A	TOTAL VOLUME: 2,813	
LM CT106	TOTAL WK TO DATE VOLUME: 2,813	
Committed: 6,434	Delivered: 8,602	

For Tuesday negotiated cash trading was at a standstill in the Southern Plains. In Nebraska and Western Cornbelt negotiated cash trading was mostly inactive on very light demand. Not enough purchases for a market trend in these regions. Last week in the Texas Panhandle live purchases traded at 141.00. In Kansas last week live purchases traded from 140.00-141.00. For the prior week in Nebraska live and dressed purchases traded from 143.00-145.00 and from 228.00-230.00, respectively. In the Western Cornbelt for the previous week live and dressed purchases traded from 143.00-145.00 and from 228.00-232.00, respectively.

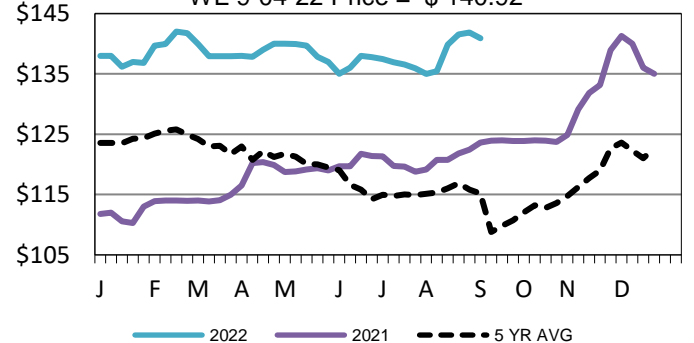
5-Area Negotiated Cash Live Steer Weights
WE 9-04-22 Weight = 1455 lbs



Iowa-Minnesota Wkly Dress Steer Wtd Avg
WE 9-04-22 Price = \$229.35



TX-OK-NM Wkly Live Steer Wtd Avg
WE 9-04-22 Price = \$140.92



USDA Livestock, Poultry and Grain Market News

St. Joseph, Missouri

Phone: 816-676-7000

stjoe.lpgmn@ams.usda.gov