

Daily Direct Steer and Heifer Slaughter Cattle Summary

For Trade on:

Wednesday, August 24, 2022

LM CT100	5-AREA	LM CT109
Neg. Cash Volume:	28,382	Dressed Formula Vol: 28,388
Live Steer Avg:	\$146.47	Steer/Heifer Avg: \$230.38
Live Heifer Avg:	\$146.26	Dressed Neg. Grid Vol: 2,155
Dressed Steer Avg:	\$232.78	Steer/Heifer Avg: \$228.88
Dressed Heifer Avg:	\$232.46	TOTAL VOLUME: 58,925
LM CT106	TOTAL WK TO DATE VOLUME:	183,066
Committed:	85,783	Delivered: 69,273

LM CT118	TX-OK-NM	LM CT109
Neg. Cash Volume:	456	Dressed Formula Vol: 13,967
Live Steer Avg:	\$141.00	Steer/Heifer Avg: \$227.25
Live Heifer Avg:	N/A	Dressed Neg. Grid Vol: 86
Dressed Steer Avg:	N/A	Steer/Heifer Avg: \$228.36
Dressed Heifer Avg:	N/A	TOTAL VOLUME: 14,509
LM CT106	TOTAL WK TO DATE VOLUME:	54,964
Committed:	21,329	Delivered: 18,260

LM CT121	KANSAS	LM CT109
Neg. Cash Volume:	355	Dressed Formula Vol: 5,938
Live Steer Avg:	N/A	Steer/Heifer Avg: \$228.35
Live Heifer Avg:	\$143.00	Dressed Neg. Grid Vol: 373
Dressed Steer Avg:	\$232.00	Steer/Heifer Avg: \$220.47
Dressed Heifer Avg:	\$232.00	TOTAL VOLUME: 6,666
LM CT106	TOTAL WK TO DATE VOLUME:	50,140
Committed:	13,351	Delivered: 18,408

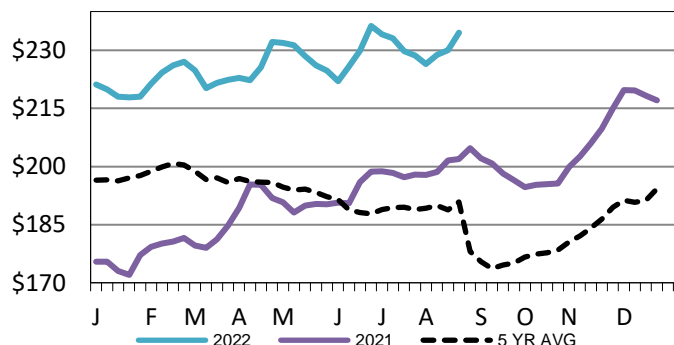
LM CT124	NEBRASKA	LM CT109
Neg. Cash Volume:	18,404	Dressed Formula Vol: 5,657
Live Steer Avg:	\$146.19	Steer/Heifer Avg: \$236.74
Live Heifer Avg:	\$145.20	Dressed Neg. Grid Vol: 481
Dressed Steer Avg:	\$232.65	Steer/Heifer Avg: \$229.65
Dressed Heifer Avg:	\$232.16	TOTAL VOLUME: 24,542
LM CT106	TOTAL WK TO DATE VOLUME:	46,460
Committed:	30,307	Delivered: 17,167

LM CT134	COLORADO	LM CT109
Neg. Cash Volume:	0	Dressed Formula Vol: 1,166
Live Steer Avg:	N/A	Steer/Heifer Avg: \$235.49
Live Heifer Avg:	N/A	Dressed Neg. Grid Vol: 910
Dressed Steer Avg:	N/A	Steer/Heifer Avg: \$231.59
Dressed Heifer Avg:	N/A	TOTAL VOLUME: 2,076
LM CT106	TOTAL WK TO DATE VOLUME:	13,210
Committed:	6,059	Delivered: 6,988

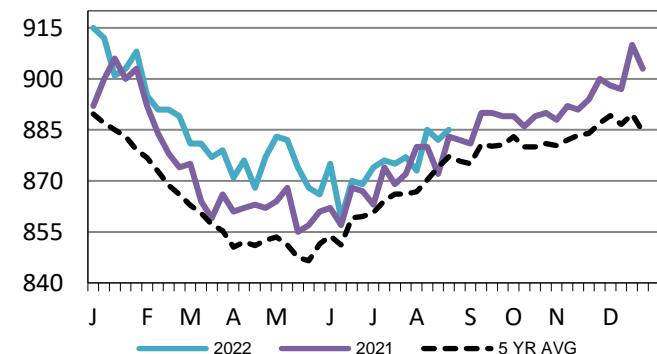
LM CT137	IA-MN	LM CT109
Neg. Cash Volume:	9,167	Dressed Formula Vol: 1,784
Live Steer Avg:	\$147.19	Steer/Heifer Avg: \$235.94
Live Heifer Avg:	\$147.06	Dressed Neg. Grid Vol: 305
Dressed Steer Avg:	\$233.30	Steer/Heifer Avg: \$230.03
Dressed Heifer Avg:	\$233.96	TOTAL VOLUME: 11,256
LM CT106	TOTAL WK TO DATE VOLUME:	18,892
Committed:	14,737	Delivered: 8,450

For Wednesday in Nebraska cash trading was moderate with moderate to good demand. Compared to last week live purchases traded 0.50-1.00 lower from 145.00-148.00 and dressed purchases traded 1.00-2.00 lower from 232.00-233.00. In the Western Cornbelt cash trading was slow on moderate demand. Compared to last week live purchases traded 2.00 lower from 146.00-148.00. Not enough dressed purchases for a full market trend. Last week dressed purchases traded at 234.00. In the Southern Plains cash trading was mostly inactive on very light demand. Not enough purchases for a market trend. In the Southern Plains Tuesday was the last reported market with live purchases at 142.00.

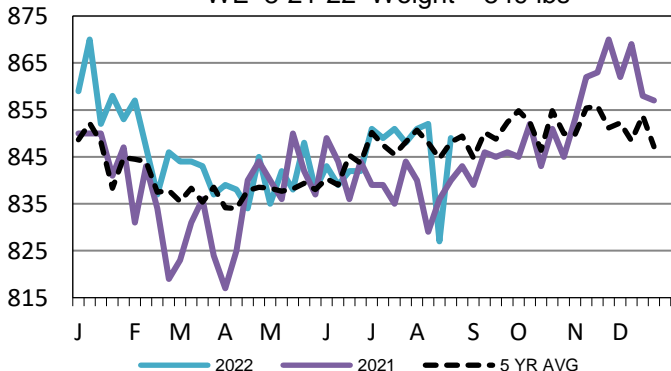
Iowa-Minnesota Wkly Dress Steer Wtd Avg
WE 8-21-22 Price = \$234.54



Kansas Formula Carcass Weights
WE 8-21-22 Weight = 885 lbs



TX-OK-NM Formula Carcass Weights
WE 8-21-22 Weight = 849 lbs



USDA Livestock, Poultry and Grain Market News

St. Joseph, Missouri

Phone: 816-676-7000

stjoe.lpgmn@ams.usda.gov