

Daily Direct Steer and Heifer Slaughter Cattle Summary

For Trade on:

Monday, August 22, 2022

LM CT100	5-AREA	LM CT109
Neg. Cash Volume:	261	Dressed Formula Vol: 55,724
Live Steer Avg:	\$149.00	Steer/Heifer Avg: \$226.49
Live Heifer Avg:	N/A	Dressed Neg. Grid Vol: 3,986
Dressed Steer Avg:	\$234.00	Steer/Heifer Avg: \$227.07
Dressed Heifer Avg:	N/A	TOTAL VOLUME: 59,971
LM CT106	TOTAL WK TO DATE VOLUME:	59,974
Committed:	52,665	Delivered: 73,761

LM CT118	TX-OK-NM	LM CT109
Neg. Cash Volume:	0	Dressed Formula Vol: 20,717
Live Steer Avg:	N/A	Steer/Heifer Avg: \$222.12
Live Heifer Avg:	N/A	Dressed Neg. Grid Vol: 499
Dressed Steer Avg:	N/A	Steer/Heifer Avg: \$220.92
Dressed Heifer Avg:	N/A	TOTAL VOLUME: 21,216
LM CT106	TOTAL WK TO DATE VOLUME:	21,166
Committed:	6,438	Delivered: 18,787

LM CT121	KANSAS	LM CT109
Neg. Cash Volume:	0	Dressed Formula Vol: 20,181
Live Steer Avg:	N/A	Steer/Heifer Avg: \$225.90
Live Heifer Avg:	N/A	Dressed Neg. Grid Vol: 1,440
Dressed Steer Avg:	N/A	Steer/Heifer Avg: \$222.22
Dressed Heifer Avg:	N/A	TOTAL VOLUME: 21,621
LM CT106	TOTAL WK TO DATE VOLUME:	21,621
Committed:	11,243	Delivered: 19,547

LM CT124	NEBRASKA	LM CT109
Neg. Cash Volume:	0	Dressed Formula Vol: 9,430
Live Steer Avg:	N/A	Steer/Heifer Avg: \$234.00
Live Heifer Avg:	N/A	Dressed Neg. Grid Vol: 1,319
Dressed Steer Avg:	N/A	Steer/Heifer Avg: \$231.90
Dressed Heifer Avg:	N/A	TOTAL VOLUME: 10,749
LM CT106	TOTAL WK TO DATE VOLUME:	10,749
Committed:	19,665	Delivered: 17,783

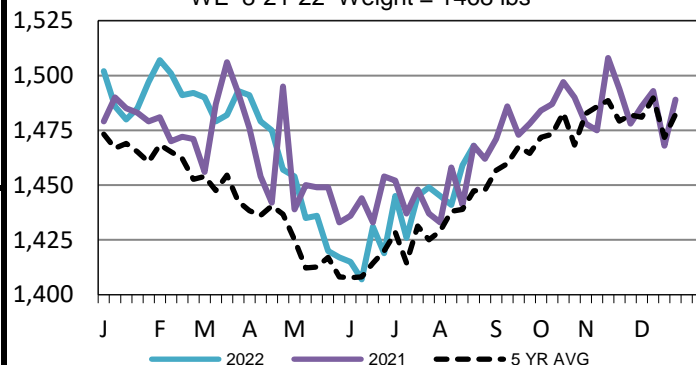
LM CT134	COLORADO	LM CT109
Neg. Cash Volume:	0	Dressed Formula Vol: 4,886
Live Steer Avg:	N/A	Steer/Heifer Avg: \$231.98
Live Heifer Avg:	N/A	Dressed Neg. Grid Vol: 0
Dressed Steer Avg:	N/A	Steer/Heifer Avg: N/A
Dressed Heifer Avg:	N/A	TOTAL VOLUME: 4,886
LM CT106	TOTAL WK TO DATE VOLUME:	4,886
Committed:	7,276	Delivered: 7,763

LM CT137	IA-MN	LM CT109
Neg. Cash Volume:	261	Dressed Formula Vol: 655
Live Steer Avg:	\$149.00	Steer/Heifer Avg: \$235.49
Live Heifer Avg:	N/A	Dressed Neg. Grid Vol: 899
Dressed Steer Avg:	\$234.00	Steer/Heifer Avg: \$231.06
Dressed Heifer Avg:	N/A	TOTAL VOLUME: 1,815
LM CT106	TOTAL WK TO DATE VOLUME:	1,815
Committed:	8,043	Delivered: 9,881

For Monday negotiated cash trading was at a standstill in the Southern Plains and Nebraska. In the Western Cornbelt negotiated cash trading was mostly inactive on very light demand. Not enough purchases for a market trend. Last week in the Southern Plains live purchases traded from 141.00-142.00. For the prior week in Nebraska live and dressed purchases traded from 146.00-148.50 and at 234.00, respectively. For the previous week in the Western Cornbelt live and dressed purchases traded from 148.00-150.00 and at 234.00, respectively.

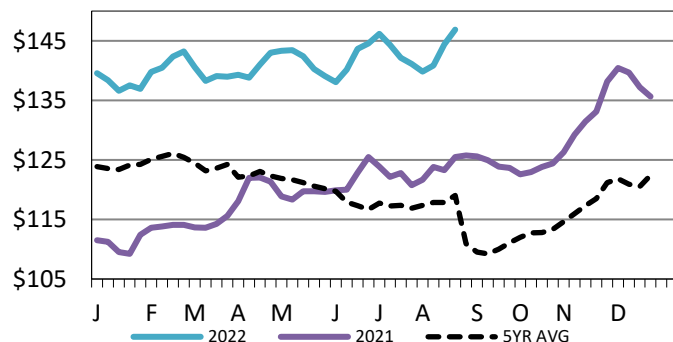
5-Area Negotiated Cash Live Steer Weights

WE 8-21-22 Weight = 1468 lbs



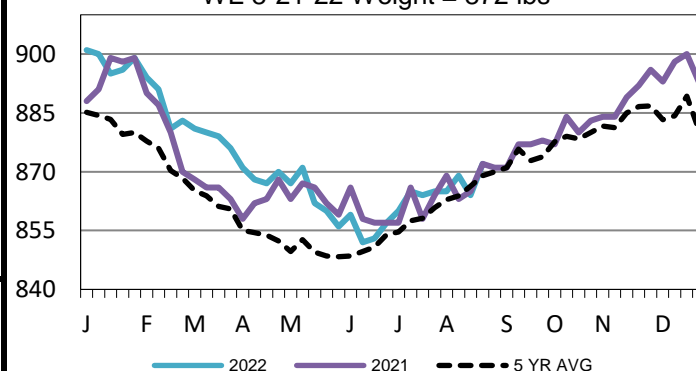
5-Area Live Steer Weighted Average

WE 8-21-22 Price = \$146.88



5-Area Formula Carcass Weight

WE 8-21-22 Weight = 872 lbs



USDA Livestock, Poultry and Grain Market News

St. Joseph, Missouri

Phone: 816-676-7000

stjoe.lpgmn@ams.usda.gov