

Daily Direct Steer and Heifer Slaughter Cattle Summary

For Trade on:

Friday, August 12, 2022

LM CT100	5-AREA	LM CT109
Neg. Cash Volume:	1,602	Dressed Formula Vol: 44,493
Live Steer Avg:	\$146.45	Steer/Heifer Avg: \$225.84
Live Heifer Avg:	\$146.00	Dressed Neg. Grid Vol: 6,912
Dressed Steer Avg:	\$229.24	Steer/Heifer Avg: \$225.83
Dressed Heifer Avg:	\$229.00	TOTAL VOLUME: 53,007
LM CT106	TOTAL WK TO DATE VOLUME: 333,414	
Committed:	53,964	Delivered: 91,224

LM CT118	TX-OK-NM	LM CT109
Neg. Cash Volume:	38	Dressed Formula Vol: 5,668
Live Steer Avg:	N/A	Steer/Heifer Avg: \$220.42
Live Heifer Avg:	N/A	Dressed Neg. Grid Vol: 0
Dressed Steer Avg:	N/A	Steer/Heifer Avg: N/A
Dressed Heifer Avg:	N/A	TOTAL VOLUME: 5,706
LM CT106	TOTAL WK TO DATE VOLUME: 77,051	
Committed:	9,357	Delivered: 21,614

LM CT121	KANSAS	LM CT109
Neg. Cash Volume:	0	Dressed Formula Vol: 19,696
Live Steer Avg:	N/A	Steer/Heifer Avg: \$220.10
Live Heifer Avg:	N/A	Dressed Neg. Grid Vol: 1,255
Dressed Steer Avg:	N/A	Steer/Heifer Avg: \$216.67
Dressed Heifer Avg:	N/A	TOTAL VOLUME: 20,951
LM CT106	TOTAL WK TO DATE VOLUME: 101,692	
Committed:	18,819	Delivered: 29,122

LM CT124	NEBRASKA	LM CT109
Neg. Cash Volume:	222	Dressed Formula Vol: 10,317
Live Steer Avg:	N/A	Steer/Heifer Avg: \$234.57
Live Heifer Avg:	N/A	Dressed Neg. Grid Vol: 2,893
Dressed Steer Avg:	\$229.00	Steer/Heifer Avg: \$227.67
Dressed Heifer Avg:	N/A	TOTAL VOLUME: 13,432
LM CT106	TOTAL WK TO DATE VOLUME: 80,299	
Committed:	9,788	Delivered: 20,332

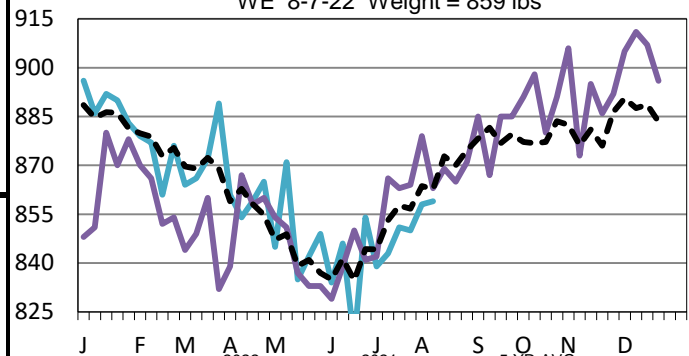
LM CT134	COLORADO	LM CT109
Neg. Cash Volume:	0	Dressed Formula Vol: 5,816
Live Steer Avg:	N/A	Steer/Heifer Avg: \$229.60
Live Heifer Avg:	N/A	Dressed Neg. Grid Vol: 301
Dressed Steer Avg:	N/A	Steer/Heifer Avg: \$226.54
Dressed Heifer Avg:	N/A	TOTAL VOLUME: 6,117
LM CT106	TOTAL WK TO DATE VOLUME: 26,177	
Committed:	9,253	Delivered: 7,125

LM CT137	IA-MN	LM CT109
Neg. Cash Volume:	1,342	Dressed Formula Vol: 3,104
Live Steer Avg:	\$146.45	Steer/Heifer Avg: \$236.61
Live Heifer Avg:	\$146.00	Dressed Neg. Grid Vol: 2,463
Dressed Steer Avg:	\$230.00	Steer/Heifer Avg: \$228.23
Dressed Heifer Avg:	\$229.00	TOTAL VOLUME: 6,909
LM CT106	TOTAL WK TO DATE VOLUME: 48,824	
Committed:	6,747	Delivered: 13,031

For Friday in the Southern Plains negotiated cash trading was at a standstill. In Nebraska negotiated cash trading was mostly inactive on light demand. In the Western Cornbelt negotiated cash trading was limited on light demand. Not enough purchases for a market trend in any region. Thursday was the last reported market in the Southern Plains with live purchases at 140.00. Wednesday was the last reported market in Nebraska and Western Cornbelt. In Nebraska live and dressed purchases traded from 144.00-148.00 and from 229.00-230.00, respectively. In the Western Cornbelt live and dressed purchases traded from 145.00-148.00 and at 229.00, respectively.

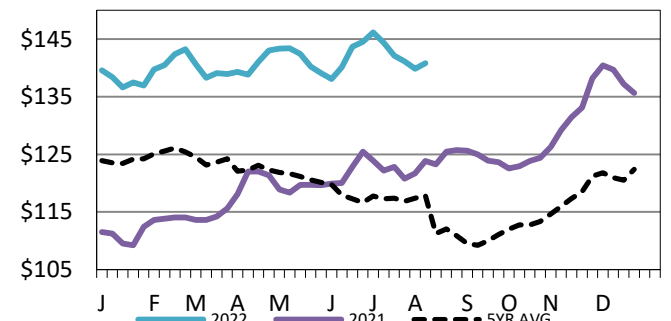
Colorado Formula Carcass Weights

WE 8-7-22 Weight = 859 lbs



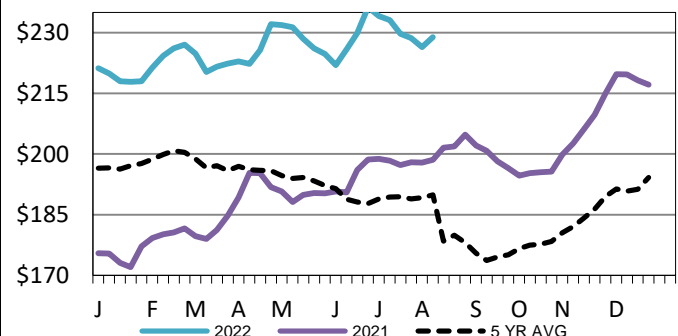
5-Area Live Steer Weighted Average

WE 8-7-22 Price = \$140.84



Iowa-Minnesota Wkly Dress Steer Wtd Avg

WE 8-7-22 Price = \$228.87



USDA Livestock, Poultry and Grain Market News

St. Joseph, Missouri

Phone: 816-676-7000

stjoe.lpgmn@ams.usda.gov