

Daily Direct Steer and Heifer Slaughter Cattle Summary

For Trade on:

Monday, August 08, 2022

|                          |                          |                              |
|--------------------------|--------------------------|------------------------------|
| <a href="#">LM CT100</a> | 5-AREA                   | <a href="#">LM CT109</a>     |
| Neg. Cash Volume:        | 112                      | Dressed Formula Vol: 48,620  |
| Live Steer Avg:          | \$146.00                 | Steer/Heifer Avg: \$221.65   |
| Live Heifer Avg:         | N/A                      | Dressed Neg. Grid Vol: 3,688 |
| Dressed Steer Avg:       | N/A                      | Steer/Heifer Avg: \$225.85   |
| Dressed Heifer Avg:      | N/A                      | TOTAL VOLUME: 52,420         |
| <a href="#">LM CT106</a> | TOTAL WK TO DATE VOLUME: | 52,420                       |
| Committed:               | 66,170                   | Delivered: 64,887            |

|                          |                          |                             |
|--------------------------|--------------------------|-----------------------------|
| <a href="#">LM CT118</a> | TX-OK-NM                 | <a href="#">LM CT109</a>    |
| Neg. Cash Volume:        | 0                        | Dressed Formula Vol: 12,963 |
| Live Steer Avg:          | N/A                      | Steer/Heifer Avg: \$216.99  |
| Live Heifer Avg:         | N/A                      | Dressed Neg. Grid Vol: 0    |
| Dressed Steer Avg:       | N/A                      | Steer/Heifer Avg: N/A       |
| Dressed Heifer Avg:      | N/A                      | TOTAL VOLUME: 12,963        |
| <a href="#">LM CT106</a> | TOTAL WK TO DATE VOLUME: | 12,963                      |
| Committed:               | 27,370                   | Delivered: 14,848           |

|                          |                          |                              |
|--------------------------|--------------------------|------------------------------|
| <a href="#">LM CT121</a> | KANSAS                   | <a href="#">LM CT109</a>     |
| Neg. Cash Volume:        | 0                        | Dressed Formula Vol: 20,553  |
| Live Steer Avg:          | N/A                      | Steer/Heifer Avg: \$219.70   |
| Live Heifer Avg:         | N/A                      | Dressed Neg. Grid Vol: 1,377 |
| Dressed Steer Avg:       | N/A                      | Steer/Heifer Avg: \$220.55   |
| Dressed Heifer Avg:      | N/A                      | TOTAL VOLUME: 21,930         |
| <a href="#">LM CT106</a> | TOTAL WK TO DATE VOLUME: | 21,930                       |
| Committed:               | 9,798                    | Delivered: 18,383            |

|                          |                          |                              |
|--------------------------|--------------------------|------------------------------|
| <a href="#">LM CT124</a> | NEBRASKA                 | <a href="#">LM CT109</a>     |
| Neg. Cash Volume:        | 0                        | Dressed Formula Vol: 7,746   |
| Live Steer Avg:          | N/A                      | Steer/Heifer Avg: \$229.03   |
| Live Heifer Avg:         | N/A                      | Dressed Neg. Grid Vol: 1,266 |
| Dressed Steer Avg:       | N/A                      | Steer/Heifer Avg: \$230.36   |
| Dressed Heifer Avg:      | N/A                      | TOTAL VOLUME: 9,012          |
| <a href="#">LM CT106</a> | TOTAL WK TO DATE VOLUME: | 9,012                        |
| Committed:               | 20,068                   | Delivered: 16,215            |

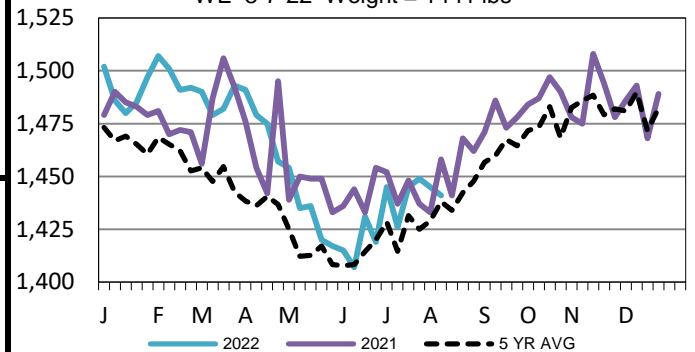
|                          |                          |                            |
|--------------------------|--------------------------|----------------------------|
| <a href="#">LM CT134</a> | COLORADO                 | <a href="#">LM CT109</a>   |
| Neg. Cash Volume:        | 0                        | Dressed Formula Vol: 5,520 |
| Live Steer Avg:          | N/A                      | Steer/Heifer Avg: \$225.25 |
| Live Heifer Avg:         | N/A                      | Dressed Neg. Grid Vol: 587 |
| Dressed Steer Avg:       | N/A                      | Steer/Heifer Avg: \$224.73 |
| Dressed Heifer Avg:      | N/A                      | TOTAL VOLUME: 6,107        |
| <a href="#">LM CT106</a> | TOTAL WK TO DATE VOLUME: | 6,107                      |
| Committed:               | 4,193                    | Delivered: 7,442           |

|                          |                          |                            |
|--------------------------|--------------------------|----------------------------|
| <a href="#">LM CT137</a> | IA-MN                    | <a href="#">LM CT109</a>   |
| Neg. Cash Volume:        | 112                      | Dressed Formula Vol: 2,047 |
| Live Steer Avg:          | \$146.00                 | Steer/Heifer Avg: \$233.61 |
| Live Heifer Avg:         | N/A                      | Dressed Neg. Grid Vol: 530 |
| Dressed Steer Avg:       | N/A                      | Steer/Heifer Avg: \$231.24 |
| Dressed Heifer Avg:      | N/A                      | TOTAL VOLUME: 2,689        |
| <a href="#">LM CT106</a> | TOTAL WK TO DATE VOLUME: | 2,689                      |
| Committed:               | 4,741                    | Delivered: 7,999           |

For Monday in the Southern Plains and Nebraska negotiated cash trading was at a standstill. In the Western Cornbelt negotiated cash trading was mostly inactive on light demand. Not enough purchases for a market trend. Last week in the Texas Panhandle live purchases traded from 135.00-136.00. In Kansas last week live purchases traded at 136.00. For the prior week in Nebraska live and dressed purchases traded from 140.00-143.00 and at 227.00, respectively. For the previous week in the Western Cornbelt live purchases ranged from 141.00-147.00 and dressed purchases ranged from 225.00-232.00.

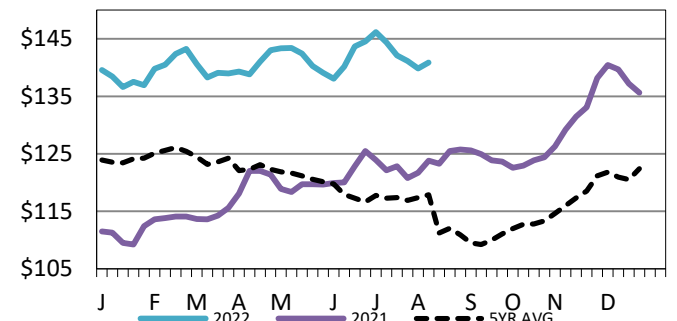
5-Area Negotiated Cash Live Steer Weights

WE 8-7-22 Weight = 1441 lbs



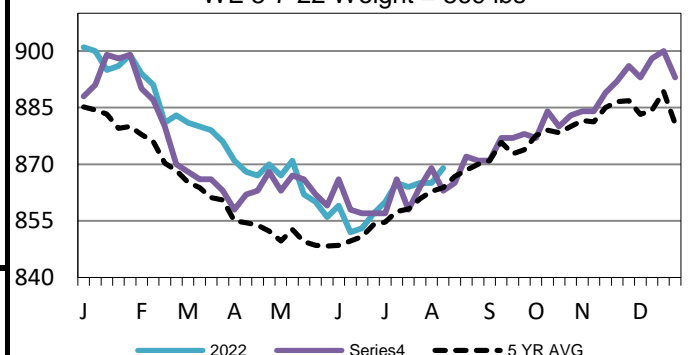
5-Area Live Steer Weighted Average

WE 8-7-22 Price = \$140.84



5-Area Formula Carcass Weight

WE 8-7-22 Weight = 869 lbs



USDA Livestock, Poultry and Grain Market News

St. Joseph, Missouri

Phone: 816-676-7000

[stjoe.lpgmn@ams.usda.gov](mailto:stjoe.lpgmn@ams.usda.gov)