

Daily Direct Steer and Heifer Slaughter Cattle Summary

For Trade on:

Monday, August 01, 2022

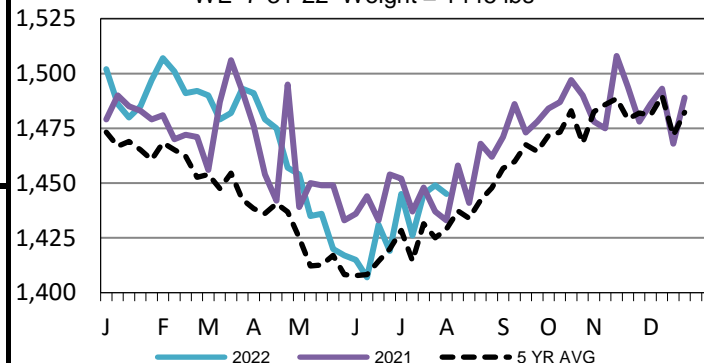
LM CT100	5-AREA	LM CT109
Neg. Cash Volume:	78	Dressed Formula Vol: 59,446
Live Steer Avg:	N/A	Steer/Heifer Avg: \$221.13
Live Heifer Avg:	N/A	Dressed Neg. Grid Vol: 5,186
Dressed Steer Avg:	N/A	Steer/Heifer Avg: \$228.72
Dressed Heifer Avg:	N/A	TOTAL VOLUME: 64,710
LM CT106	TOTAL WK TO DATE VOLUME:	64,710
Committed:	57,340	Delivered: 70,968

For Monday negotiated cash trading in the Southern Plains and Nebraska was at a standstill. In the Western Cornbelt negotiated cash trading was mostly inactive on light demand. Not enough purchases in any region for a market trend. Last week in the Southern Plains live purchases traded at 135.00. For the prior week in Nebraska live and dressed purchases traded at 138.00 and at 225.00, respectively. For the previous week in the Western Cornbelt live and dressed purchases traded from 141.00-145.00 and from 224.00-228.00, respectively.

LM CT118	TX-OK-NM	LM CT109
Neg. Cash Volume:	0	Dressed Formula Vol: 23,768
Live Steer Avg:	N/A	Steer/Heifer Avg: \$215.17
Live Heifer Avg:	N/A	Dressed Neg. Grid Vol: 186
Dressed Steer Avg:	N/A	Steer/Heifer Avg: \$217.99
Dressed Heifer Avg:	N/A	TOTAL VOLUME: 23,954
LM CT106	TOTAL WK TO DATE VOLUME:	23,954
Committed:	20,360	Delivered: 19,160

5-Area Negotiated Cash Live Steer Weights

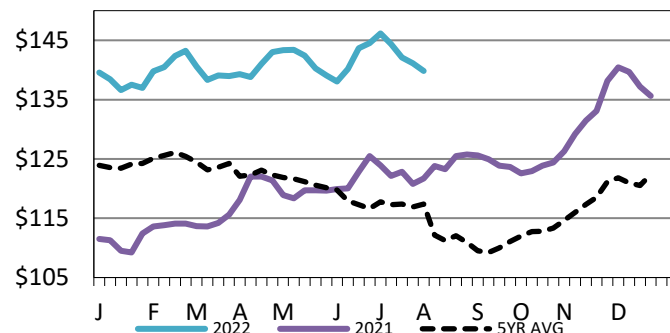
WE 7-31-22 Weight = 1445 lbs



LM CT121	KANSAS	LM CT109
Neg. Cash Volume:	0	Dressed Formula Vol: 19,530
Live Steer Avg:	N/A	Steer/Heifer Avg: \$221.23
Live Heifer Avg:	N/A	Dressed Neg. Grid Vol: 2,422
Dressed Steer Avg:	N/A	Steer/Heifer Avg: \$224.72
Dressed Heifer Avg:	N/A	TOTAL VOLUME: 21,952
LM CT106	TOTAL WK TO DATE VOLUME:	21,952
Committed:	12,065	Delivered: 19,435

5-Area Live Steer Weighted Average

WE 7-31-22 Price = \$139.83

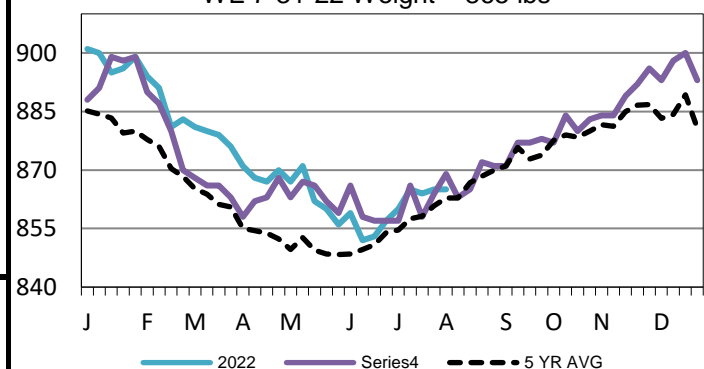


LM CT124	NEBRASKA	LM CT109
Neg. Cash Volume:	0	Dressed Formula Vol: 8,759
Live Steer Avg:	N/A	Steer/Heifer Avg: \$231.65
Live Heifer Avg:	N/A	Dressed Neg. Grid Vol: 1,253
Dressed Steer Avg:	N/A	Steer/Heifer Avg: \$234.76
Dressed Heifer Avg:	N/A	TOTAL VOLUME: 10,012
LM CT106	TOTAL WK TO DATE VOLUME:	10,012
Committed:	13,514	Delivered: 14,677

LM CT134	COLORADO	LM CT109
Neg. Cash Volume:	0	Dressed Formula Vol: 6,145
Live Steer Avg:	N/A	Steer/Heifer Avg: \$225.63
Live Heifer Avg:	N/A	Dressed Neg. Grid Vol: 428
Dressed Steer Avg:	N/A	Steer/Heifer Avg: \$231.64
Dressed Heifer Avg:	N/A	TOTAL VOLUME: 6,573
LM CT106	TOTAL WK TO DATE VOLUME:	6,573
Committed:	6,851	Delivered: 7,432

5-Area Formula Carcass Weight

WE 7-31-22 Weight = 865 lbs



LM CT137	IA-MN	LM CT109
Neg. Cash Volume:	78	Dressed Formula Vol: 1,321
Live Steer Avg:	N/A	Steer/Heifer Avg: \$236.56
Live Heifer Avg:	N/A	Dressed Neg. Grid Vol: 908
Dressed Steer Avg:	N/A	Steer/Heifer Avg: \$232.03
Dressed Heifer Avg:	N/A	TOTAL VOLUME: 2,307
LM CT106	TOTAL WK TO DATE VOLUME:	2,307
Committed:	4,550	Delivered: 10,264

USDA Livestock, Poultry and Grain Market News

St. Joseph, Missouri

Phone: 816-676-7000

stjoe.lpgmn@ams.usda.gov