

Daily Direct Steer and Heifer Slaughter Cattle Summary

For Trade on:

Wednesday, July 27, 2022

LM CT100	5-AREA	LM CT109
Neg. Cash Volume:	34,304	Dressed Formula Vol: 35,294
Live Steer Avg:	\$139.89	Steer/Heifer Avg: \$225.47
Live Heifer Avg:	\$138.54	Dressed Neg. Grid Vol: 1,526
Dressed Steer Avg:	\$225.14	Steer/Heifer Avg: \$228.67
Dressed Heifer Avg:	\$225.17	TOTAL VOLUME: 71,124
LM CT106	TOTAL WK TO DATE VOLUME:	184,902
Committed:	110,329	Delivered: 72,723

LM CT118	TX-OK-NM	LM CT109
Neg. Cash Volume:	0	Dressed Formula Vol: 15,661
Live Steer Avg:	N/A	Steer/Heifer Avg: \$220.86
Live Heifer Avg:	N/A	Dressed Neg. Grid Vol: 0
Dressed Steer Avg:	N/A	Steer/Heifer Avg: N/A
Dressed Heifer Avg:	N/A	TOTAL VOLUME: 15,661
LM CT106	TOTAL WK TO DATE VOLUME:	56,121
Committed:	21,619	Delivered: 17,630

LM CT121	KANSAS	LM CT109
Neg. Cash Volume:	4,649	Dressed Formula Vol: 8,526
Live Steer Avg:	\$135.11	Steer/Heifer Avg: \$222.50
Live Heifer Avg:	\$135.00	Dressed Neg. Grid Vol: 637
Dressed Steer Avg:	\$223.22	Steer/Heifer Avg: \$222.52
Dressed Heifer Avg:	\$225.00	TOTAL VOLUME: 13,812
LM CT106	TOTAL WK TO DATE VOLUME:	56,271
Committed:	21,776	Delivered: 21,277

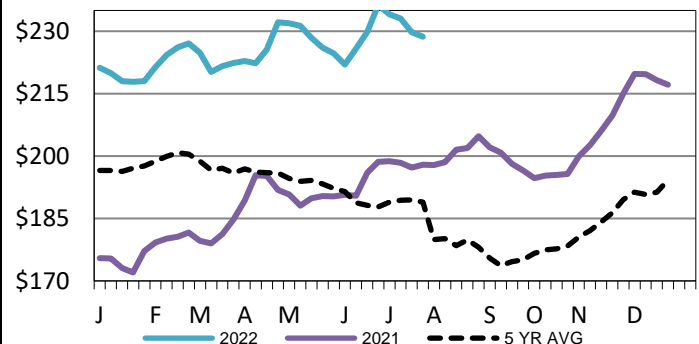
LM CT124	NEBRASKA	LM CT109
Neg. Cash Volume:	18,117	Dressed Formula Vol: 8,795
Live Steer Avg:	\$139.19	Steer/Heifer Avg: \$233.57
Live Heifer Avg:	\$138.32	Dressed Neg. Grid Vol: 677
Dressed Steer Avg:	\$225.16	Steer/Heifer Avg: \$232.53
Dressed Heifer Avg:	\$225.22	TOTAL VOLUME: 27,589
LM CT106	TOTAL WK TO DATE VOLUME:	44,498
Committed:	34,518	Delivered: 17,934

LM CT134	COLORADO	LM CT109
Neg. Cash Volume:	0	Dressed Formula Vol: 1,444
Live Steer Avg:	N/A	Steer/Heifer Avg: \$240.64
Live Heifer Avg:	N/A	Dressed Neg. Grid Vol: 0
Dressed Steer Avg:	N/A	Steer/Heifer Avg: N/A
Dressed Heifer Avg:	N/A	TOTAL VOLUME: 1,444
LM CT106	TOTAL WK TO DATE VOLUME:	9,196
Committed:	12,612	Delivered: 8,332

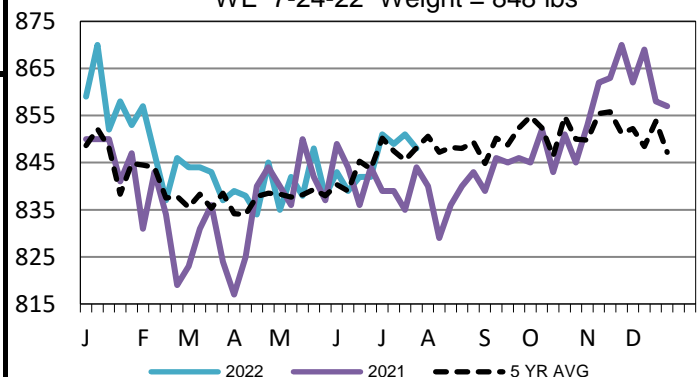
LM CT137	IA-MN	LM CT109
Neg. Cash Volume:	11,538	Dressed Formula Vol: 993
Live Steer Avg:	\$142.96	Steer/Heifer Avg: \$231.19
Live Heifer Avg:	\$143.15	Dressed Neg. Grid Vol: 212
Dressed Steer Avg:	\$225.23	Steer/Heifer Avg: \$234.82
Dressed Heifer Avg:	\$225.02	TOTAL VOLUME: 12,743
LM CT106	TOTAL WK TO DATE VOLUME:	19,320
Committed:	19,804	Delivered: 7,550

For Wednesday in Nebraska and Western Cornbelt negotiated cash trading was moderate on moderate to good demand. In Nebraska compared to last week live purchases traded 1.00-5.50 lower at 138.00 and dressed purchases traded 2.00 lower at 225.00. In the Western Cornbelt compared to last week live purchases traded steady from 141.00-145.00 and dressed purchases traded 3.00-7.00 lower from 224.00-225.00. In Kansas negotiated cash trading was slow on light demand. Compared to the last reported market on Tuesday live purchases traded steady at 135.00. In the Texas Panhandle negotiated cash trading was at a standstill. Tuesday was the last reported market with live purchases at 135.00.

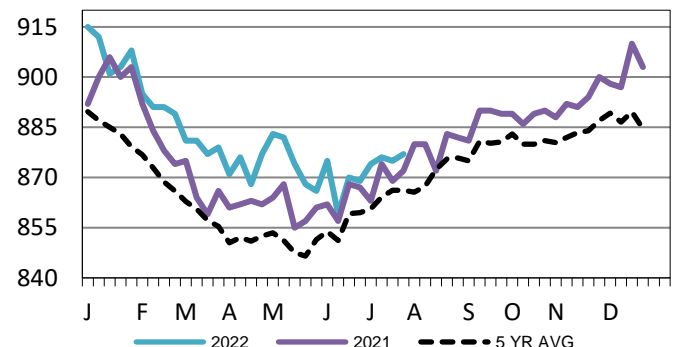
Iowa-Minnesota Wkly Dress Steer Wtd Avg
WE 7-24-22 Price = \$228.67



TX-OK-NM Formula Carcass Weights
WE 7-24-22 Weight = 848 lbs



Kansas Formula Carcass Weights
WE 7-24-22 Weight = 877 lbs



USDA Livestock, Poultry and Grain Market News

St. Joseph, Missouri

Phone: 816-676-7000

stjoe.lpgmn@ams.usda.gov