

## Daily Direct Steer and Heifer Slaughter Cattle Summary

For Trade on:

Friday, July 22, 2022

<a href="#">LM CT100</a>	<b>5-AREA</b>	<a href="#">LM CT109</a>
<b>Neg. Cash Volume:</b>	8,667	<b>Dressed Formula Vol:</b> 53,139
Live Steer Avg:	\$142.70	Steer/Heifer Avg: \$226.60
Live Heifer Avg:	\$137.30	<b>Dressed Neg. Grid Vol:</b> 3,511
Dressed Steer Avg:	\$228.38	Steer/Heifer Avg: \$231.29
Dressed Heifer Avg:	\$228.00	<b>TOTAL VOLUME:</b> 65,317
<a href="#">LM CT106</a>	<b>TOTAL WK TO DATE VOLUME:</b>	<b>296,789</b>
<b>Committed:</b>	<b>94,626</b>	<b>Delivered:</b> 98,945

<a href="#">LM CT118</a>	<b>TX-OK-NM</b>	<a href="#">LM CT109</a>
<b>Neg. Cash Volume:</b>	0	<b>Dressed Formula Vol:</b> 11,883
Live Steer Avg:	N/A	Steer/Heifer Avg: \$219.12
Live Heifer Avg:	N/A	<b>Dressed Neg. Grid Vol:</b> 0
Dressed Steer Avg:	N/A	Steer/Heifer Avg: N/A
Dressed Heifer Avg:	N/A	<b>TOTAL VOLUME:</b> 11,883
<a href="#">LM CT106</a>	<b>TOTAL WK TO DATE VOLUME:</b>	<b>71,458</b>
<b>Committed:</b>	<b>34,694</b>	<b>Delivered:</b> 24,324

<a href="#">LM CT121</a>	<b>KANSAS</b>	<a href="#">LM CT109</a>
<b>Neg. Cash Volume:</b>	2,060	<b>Dressed Formula Vol:</b> 20,494
Live Steer Avg:	\$136.00	Steer/Heifer Avg: \$221.56
Live Heifer Avg:	\$136.00	<b>Dressed Neg. Grid Vol:</b> 1,151
Dressed Steer Avg:	N/A	Steer/Heifer Avg: \$221.85
Dressed Heifer Avg:	N/A	<b>TOTAL VOLUME:</b> 23,705
<a href="#">LM CT106</a>	<b>TOTAL WK TO DATE VOLUME:</b>	<b>88,327</b>
<b>Committed:</b>	<b>26,749</b>	<b>Delivered:</b> 31,237

<a href="#">LM CT124</a>	<b>NEBRASKA</b>	<a href="#">LM CT109</a>
<b>Neg. Cash Volume:</b>	513	<b>Dressed Formula Vol:</b> 9,040
Live Steer Avg:	N/A	Steer/Heifer Avg: \$241.22
Live Heifer Avg:	N/A	<b>Dressed Neg. Grid Vol:</b> 1,329
Dressed Steer Avg:	\$226.81	Steer/Heifer Avg: \$235.53
Dressed Heifer Avg:	N/A	<b>TOTAL VOLUME:</b> 10,882
<a href="#">LM CT106</a>	<b>TOTAL WK TO DATE VOLUME:</b>	<b>56,552</b>
<b>Committed:</b>	<b>9,216</b>	<b>Delivered:</b> 25,630

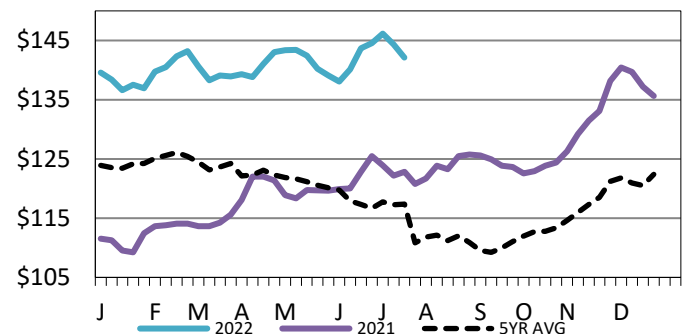
<a href="#">LM CT134</a>	<b>COLORADO</b>	<a href="#">LM CT109</a>
<b>Neg. Cash Volume:</b>	0	<b>Dressed Formula Vol:</b> 9,511
Live Steer Avg:	N/A	Steer/Heifer Avg: \$229.46
Live Heifer Avg:	N/A	<b>Dressed Neg. Grid Vol:</b> 116
Dressed Steer Avg:	N/A	Steer/Heifer Avg: \$238.69
Dressed Heifer Avg:	N/A	<b>TOTAL VOLUME:</b> 9,627
<a href="#">LM CT106</a>	<b>TOTAL WK TO DATE VOLUME:</b>	<b>29,357</b>
<b>Committed:</b>	<b>14,413</b>	<b>Delivered:</b> 5,874

<a href="#">LM CT137</a>	<b>IA-MN</b>	<a href="#">LM CT109</a>
<b>Neg. Cash Volume:</b>	6,094	<b>Dressed Formula Vol:</b> 2,240
Live Steer Avg:	\$144.31	Steer/Heifer Avg: \$241.36
Live Heifer Avg:	\$142.76	<b>Dressed Neg. Grid Vol:</b> 915
Dressed Steer Avg:	\$229.04	Steer/Heifer Avg: \$236.05
Dressed Heifer Avg:	\$228.00	<b>TOTAL VOLUME:</b> 9,249
<a href="#">LM CT106</a>	<b>TOTAL WK TO DATE VOLUME:</b>	<b>32,873</b>
<b>Committed:</b>	<b>9,554</b>	<b>Delivered:</b> 11,880

For Friday in Kansas negotiated cash trading was slow on light demand. A few live purchases traded steady at 136.00, when compared to the last reported market on Thursday. In the Western Cornbelt negotiated cash trading was slow on moderate demand. Compared to the last reported market on Thursday live purchases traded 1.00-3.00 higher at 145.00. Not enough purchases for a market trend. Last week dressed traded from 228.00-230.00. In the Texas Panhandle and Nebraska negotiated cash trading was mostly inactive on light demand. Not enough purchases for a market trend. Wednesday the last reported market in the Texas Panhandle with live at 136.00. Wednesday was the last reported market in Nebraska with live and dressed purchases from 139.00-143.50 and at 227.00, respectively.

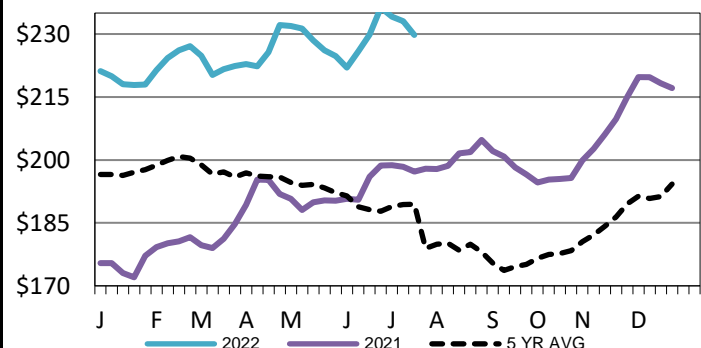
## 5-Area Live Steer Weighted Average

WE 7-17-22 Price = \$142.12



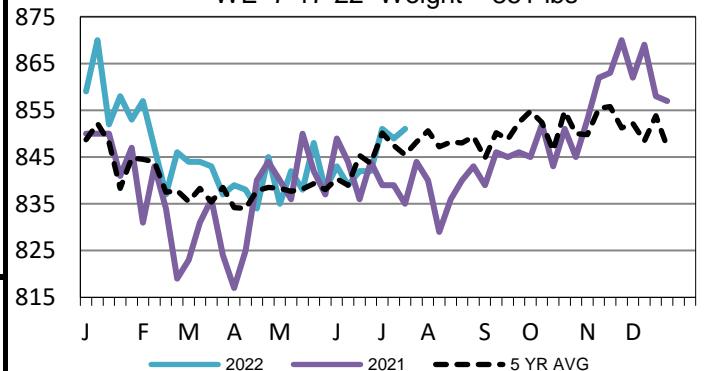
## Iowa-Minnesota Wkly Dress Steer Wtd Avg

WE 7-17-22 Price = \$229.75



## TX-OK-NM Formula Carcass Weights

WE 7-17-22 Weight = 851 lbs



## USDA Livestock, Poultry and Grain Market News

St. Joseph, Missouri

Phone: 816-676-7000

[stjoe.lpgmn@ams.usda.gov](mailto:stjoe.lpgmn@ams.usda.gov)