

Daily Direct Steer and Heifer Slaughter Cattle Summary

For Trade on:

Monday, July 18, 2022

| | | |
|--------------------------|---------------------------------|-------------------------------------|
| LM CT100 | 5-AREA | LM CT109 |
| Neg. Cash Volume: | 380 | Dressed Formula Vol: 52,784 |
| Live Steer Avg: | \$141.51 | Steer/Heifer Avg: \$225.64 |
| Live Heifer Avg: | N/A | Dressed Neg. Grid Vol: 4,531 |
| Dressed Steer Avg: | \$224.00 | Steer/Heifer Avg: \$228.25 |
| Dressed Heifer Avg: | N/A | TOTAL VOLUME: 57,695 |
| LM CT106 | TOTAL WK TO DATE VOLUME: | 57,695 |
| Committed: | 62,833 | Delivered: 75,011 |

| | | |
|--------------------------|---------------------------------|------------------------------------|
| LM CT118 | TX-OK-NM | LM CT109 |
| Neg. Cash Volume: | 0 | Dressed Formula Vol: 13,625 |
| Live Steer Avg: | N/A | Steer/Heifer Avg: \$218.25 |
| Live Heifer Avg: | N/A | Dressed Neg. Grid Vol: 364 |
| Dressed Steer Avg: | N/A | Steer/Heifer Avg: \$215.14 |
| Dressed Heifer Avg: | N/A | TOTAL VOLUME: 13,989 |
| LM CT106 | TOTAL WK TO DATE VOLUME: | 13,989 |
| Committed: | 23,975 | Delivered: 16,068 |

| | | |
|--------------------------|---------------------------------|-------------------------------------|
| LM CT121 | KANSAS | LM CT109 |
| Neg. Cash Volume: | 0 | Dressed Formula Vol: 22,851 |
| Live Steer Avg: | N/A | Steer/Heifer Avg: \$222.67 |
| Live Heifer Avg: | N/A | Dressed Neg. Grid Vol: 2,648 |
| Dressed Steer Avg: | N/A | Steer/Heifer Avg: \$225.06 |
| Dressed Heifer Avg: | N/A | TOTAL VOLUME: 25,499 |
| LM CT106 | TOTAL WK TO DATE VOLUME: | 24,385 |
| Committed: | 12,289 | Delivered: 23,319 |

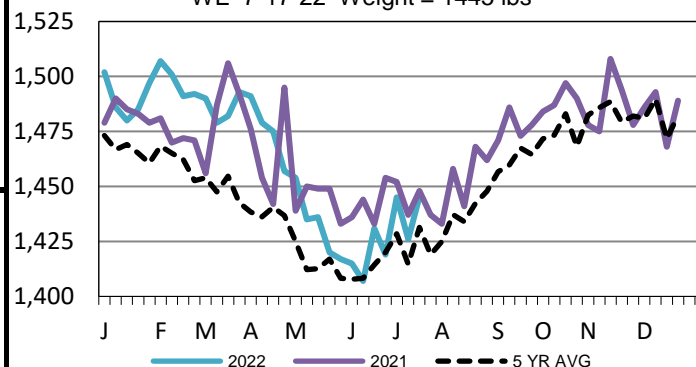
| | | |
|--------------------------|---------------------------------|-------------------------------------|
| LM CT124 | NEBRASKA | LM CT109 |
| Neg. Cash Volume: | 40 | Dressed Formula Vol: 9,496 |
| Live Steer Avg: | \$143.50 | Steer/Heifer Avg: \$238.08 |
| Live Heifer Avg: | N/A | Dressed Neg. Grid Vol: 1,286 |
| Dressed Steer Avg: | N/A | Steer/Heifer Avg: \$235.39 |
| Dressed Heifer Avg: | N/A | TOTAL VOLUME: 10,822 |
| LM CT106 | TOTAL WK TO DATE VOLUME: | 10,822 |
| Committed: | 16,048 | Delivered: 17,874 |

| | | |
|--------------------------|---------------------------------|-----------------------------------|
| LM CT134 | COLORADO | LM CT109 |
| Neg. Cash Volume: | 0 | Dressed Formula Vol: 5,434 |
| Live Steer Avg: | N/A | Steer/Heifer Avg: \$230.84 |
| Live Heifer Avg: | N/A | Dressed Neg. Grid Vol: 390 |
| Dressed Steer Avg: | N/A | Steer/Heifer Avg: \$232.11 |
| Dressed Heifer Avg: | N/A | TOTAL VOLUME: 5,824 |
| LM CT106 | TOTAL WK TO DATE VOLUME: | 5,824 |
| Committed: | 4,984 | Delivered: 7,364 |

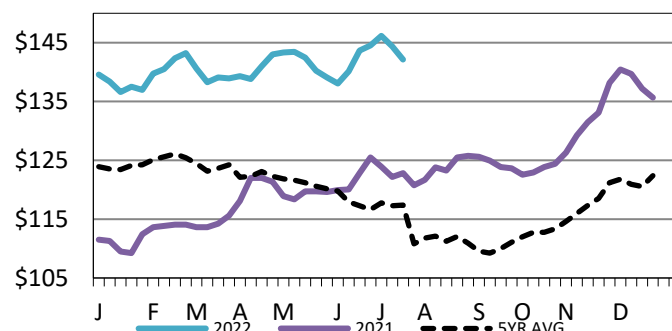
| | | |
|--------------------------|---------------------------------|-----------------------------------|
| LM CT137 | IA-MN | LM CT109 |
| Neg. Cash Volume: | 340 | Dressed Formula Vol: 1,492 |
| Live Steer Avg: | \$141.00 | Steer/Heifer Avg: \$241.45 |
| Live Heifer Avg: | N/A | Dressed Neg. Grid Vol: 804 |
| Dressed Steer Avg: | \$224.00 | Steer/Heifer Avg: \$237.11 |
| Dressed Heifer Avg: | N/A | TOTAL VOLUME: 2,636 |
| LM CT106 | TOTAL WK TO DATE VOLUME: | 2,636 |
| Committed: | 5,537 | Delivered: 10,386 |

For Monday in the Southern Plains negotiated cash was at a standstill. In Nebraska and Western Cornbelt negotiated cash trading was mostly inactive on light demand. Not enough purchases for a market trend. Last week in the Southern Plains live purchases traded at 137.00. For the prior week in Nebraska live and dressed purchases traded from 140.00-145.00 and at 230.00, respectively. For previous week in the Western Cornbelt live and dressed purchases traded from 143.50-145.00 and from 228.00-230.00, respectively.

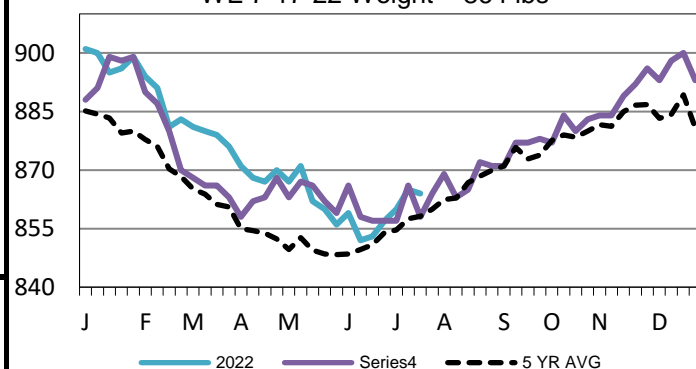
5-Area Negotiated Cash Live Steer Weights
WE 7-17-22 Weight = 1445 lbs



5-Area Live Steer Weighted Average
WE 7-17-22 Price = \$142.12



5-Area Formula Carcass Weight
WE 7-17-22 Weight = 864 lbs



USDA Livestock, Poultry and Grain Market News

St. Joseph, Missouri

Phone: 816-676-7000

stjoe.lpgmn@ams.usda.gov