

Daily Direct Steer and Heifer Slaughter Cattle Summary

For Trade on:

Wednesday, July 13, 2022

LM CT100	5-AREA	LM CT109
Neg. Cash Volume:	52,063	Dressed Formula Vol: 35,319
Live Steer Avg:	\$141.73	Steer/Heifer Avg: \$227.49
Live Heifer Avg:	\$139.70	Dressed Neg. Grid Vol: 2,129
Dressed Steer Avg:	\$229.22	Steer/Heifer Avg: \$234.07
Dressed Heifer Avg:	\$229.15	TOTAL VOLUME: 89,511
LM CT106	TOTAL WK TO DATE VOLUME:	218,003
Committed:	141,044	Delivered: 74,942

LM CT118	TX-OK-NM	LM CT109
Neg. Cash Volume:	5,825	Dressed Formula Vol: 17,976
Live Steer Avg:	\$136.58	Steer/Heifer Avg: \$223.02
Live Heifer Avg:	\$137.00	Dressed Neg. Grid Vol: 0
Dressed Steer Avg:	N/A	Steer/Heifer Avg: N/A
Dressed Heifer Avg:	N/A	TOTAL VOLUME: 23,801
LM CT106	TOTAL WK TO DATE VOLUME:	60,127
Committed:	38,806	Delivered: 19,554

LM CT121	KANSAS	LM CT109
Neg. Cash Volume:	9,511	Dressed Formula Vol: 8,682
Live Steer Avg:	\$137.05	Steer/Heifer Avg: \$223.55
Live Heifer Avg:	\$137.00	Dressed Neg. Grid Vol: 725
Dressed Steer Avg:	\$230.00	Steer/Heifer Avg: \$228.72
Dressed Heifer Avg:	N/A	TOTAL VOLUME: 18,918
LM CT106	TOTAL WK TO DATE VOLUME:	62,460
Committed:	39,412	Delivered: 22,270

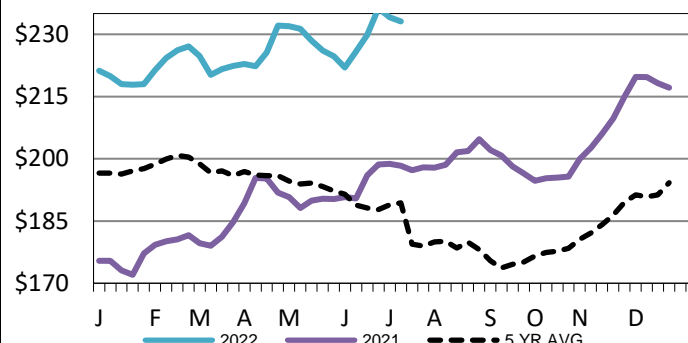
LM CT124	NEBRASKA	LM CT109
Neg. Cash Volume:	25,221	Dressed Formula Vol: 6,727
Live Steer Avg:	\$144.97	Steer/Heifer Avg: \$240.70
Live Heifer Avg:	\$143.11	Dressed Neg. Grid Vol: 846
Dressed Steer Avg:	\$229.22	Steer/Heifer Avg: \$239.17
Dressed Heifer Avg:	\$229.46	TOTAL VOLUME: 32,794
LM CT106	TOTAL WK TO DATE VOLUME:	57,824
Committed:	35,341	Delivered: 18,920

LM CT134	COLORADO	LM CT109
Neg. Cash Volume:	0	Dressed Formula Vol: 910
Live Steer Avg:	N/A	Steer/Heifer Avg: \$245.80
Live Heifer Avg:	N/A	Dressed Neg. Grid Vol: 13
Dressed Steer Avg:	N/A	Steer/Heifer Avg: \$232.28
Dressed Heifer Avg:	N/A	TOTAL VOLUME: 923
LM CT106	TOTAL WK TO DATE VOLUME:	18,400
Committed:	8,452	Delivered: 7,389

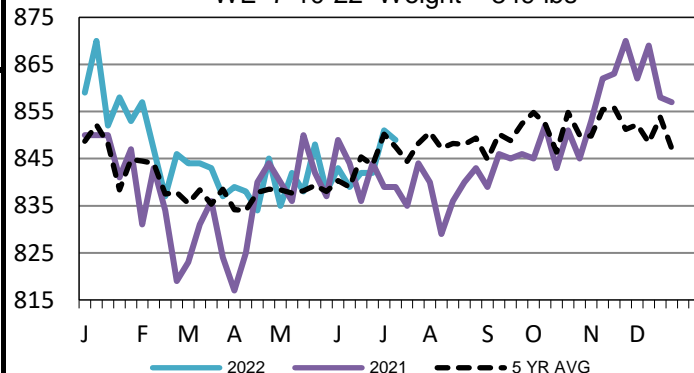
LM CT137	IA-MN	LM CT109
Neg. Cash Volume:	11,506	Dressed Formula Vol: 1,024
Live Steer Avg:	\$144.49	Steer/Heifer Avg: \$236.39
Live Heifer Avg:	\$144.67	Dressed Neg. Grid Vol: 545
Dressed Steer Avg:	\$229.21	Steer/Heifer Avg: \$233.31
Dressed Heifer Avg:	\$228.16	TOTAL VOLUME: 13,075
LM CT106	TOTAL WK TO DATE VOLUME:	19,613
Committed:	19,033	Delivered: 6,809

For Wednesday in the Southern Plains, Nebraska and Western Cornbelt negotiated cash trading and demand were moderate. Compared to last week in the Southern Plains live purchases traded steady at 137.00. In Nebraska compared to the prior week live purchases traded steady to 4.00 lower from 144.00-145.00 and dressed purchases traded 2.00 lower at 230.00. In the Western Cornbelt compared to last week live purchases traded mostly steady to 5.00 lower at 145.00 and dressed purchases traded 2.00-4.00 lower from 228.00-230.00.

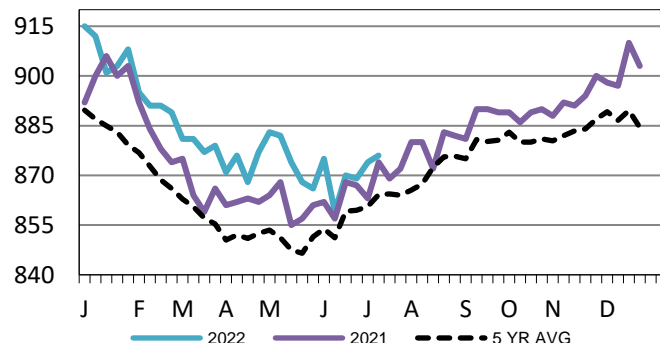
Iowa-Minnesota Wkly Dress Steer Wtd Avg
WE 7-10-22 Price = \$233.07



TX-OK-NM Formula Carcass Weights
WE 7-10-22 Weight = 849 lbs



Kansas Formula Carcass Weights
WE 7-10-22 Weight = 876 lbs



USDA Livestock, Poultry and Grain Market News

St. Joseph, Missouri

Phone: 816-676-7000

stjoe.lpgmn@ams.usda.gov