

Daily Direct Steer and Heifer Slaughter Cattle Summary

For Trade on:

Thursday, July 07, 2022

LM CT100	5-AREA	LM CT109
Neg. Cash Volume:	48,181	Dressed Formula Vol: 38,678
Live Steer Avg:	\$143.18	Steer/Heifer Avg: \$231.14
Live Heifer Avg:	\$141.37	Dressed Neg. Grid Vol: 2,323
Dressed Steer Avg:	\$232.05	Steer/Heifer Avg: \$232.56
Dressed Heifer Avg:	\$232.09	TOTAL VOLUME: 89,182
LM CT106	TOTAL WK TO DATE VOLUME:	197,499
Committed:	160,315	Delivered: 74,058

LM CT118	TX-OK-NM	LM CT109
Neg. Cash Volume:	7,337	Dressed Formula Vol: 13,067
Live Steer Avg:	\$136.94	Steer/Heifer Avg: \$226.48
Live Heifer Avg:	\$137.00	Dressed Neg. Grid Vol: 0
Dressed Steer Avg:	N/A	Steer/Heifer Avg: N/A
Dressed Heifer Avg:	N/A	TOTAL VOLUME: 20,404
LM CT106	TOTAL WK TO DATE VOLUME:	52,606
Committed:	42,330	Delivered: 17,804

LM CT121	KANSAS	LM CT109
Neg. Cash Volume:	10,110	Dressed Formula Vol: 11,287
Live Steer Avg:	\$137.26	Steer/Heifer Avg: \$226.38
Live Heifer Avg:	\$137.25	Dressed Neg. Grid Vol: 370
Dressed Steer Avg:	\$231.00	Steer/Heifer Avg: \$222.77
Dressed Heifer Avg:	N/A	TOTAL VOLUME: 21,767
LM CT106	TOTAL WK TO DATE VOLUME:	54,131
Committed:	38,601	Delivered: 20,820

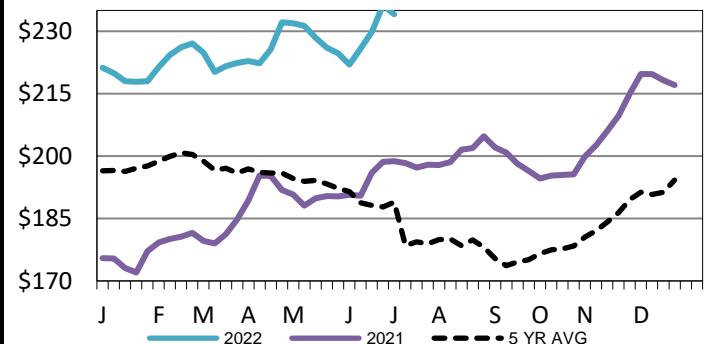
LM CT124	NEBRASKA	LM CT109
Neg. Cash Volume:	22,030	Dressed Formula Vol: 11,977
Live Steer Avg:	\$146.91	Steer/Heifer Avg: \$239.52
Live Heifer Avg:	\$146.43	Dressed Neg. Grid Vol: 1,153
Dressed Steer Avg:	\$231.88	Steer/Heifer Avg: \$235.96
Dressed Heifer Avg:	\$232.00	TOTAL VOLUME: 35,160
LM CT106	TOTAL WK TO DATE VOLUME:	55,869
Committed:	53,546	Delivered: 19,272

LM CT134	COLORADO	LM CT109
Neg. Cash Volume:	0	Dressed Formula Vol: 1,241
Live Steer Avg:	N/A	Steer/Heifer Avg: \$237.39
Live Heifer Avg:	N/A	Dressed Neg. Grid Vol: 82
Dressed Steer Avg:	N/A	Steer/Heifer Avg: \$234.57
Dressed Heifer Avg:	N/A	TOTAL VOLUME: 1,323
LM CT106	TOTAL WK TO DATE VOLUME:	19,011
Committed:	11,868	Delivered: 10,472

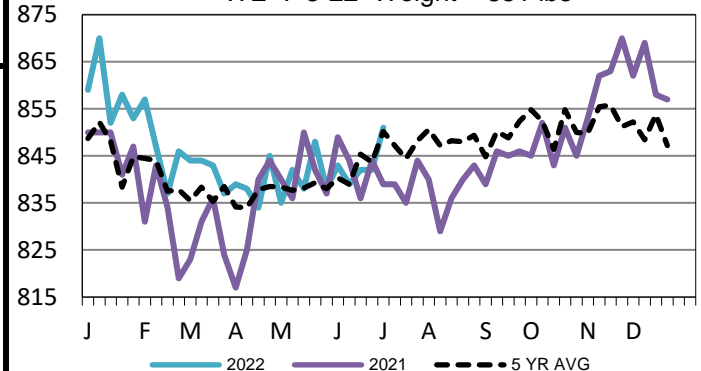
LM CT137	IA-MN	LM CT109
Neg. Cash Volume:	8,704	Dressed Formula Vol: 1,106
Live Steer Avg:	\$147.76	Steer/Heifer Avg: \$237.25
Live Heifer Avg:	\$147.26	Dressed Neg. Grid Vol: 758
Dressed Steer Avg:	\$232.58	Steer/Heifer Avg: \$232.31
Dressed Heifer Avg:	\$233.16	TOTAL VOLUME: 10,568
LM CT106	TOTAL WK TO DATE VOLUME:	22,278
Committed:	13,970	Delivered: 5,690

Thursday in the Southern Plains, Nebraska and Western Cornbelt cash trading and demand were moderate. In the Texas Panhandle, compared to last week, live purchases traded steady to 1.00 lower at 137.00. In Kansas, compared to the prior week, the bulk of live purchases traded 1.00 lower at 137.00, with a few up to 140.00. In Nebraska, compared to the previous week, live purchases traded 1.00-2.00 lower from 144.00-149.00 and dressed purchases traded 2.00 lower at 232.00. In the Western Cornbelt, compared to Wednesday, live purchases traded steady to 3.00 lower from 147.00-150.00. Last week dressed purchases traded at 234.00.

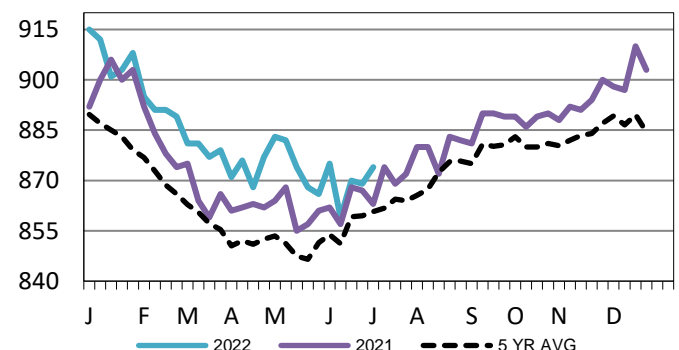
Iowa-Minnesota Wkly Dress Steer Wtd Avg
WE 7-3-22 Price = \$234.10



TX-OK-NM Formula Carcass Weights
WE 7-3-22 Weight = 851 lbs



Kansas Formula Carcass Weights
WE 7-3-22 Weight = 874 lbs



USDA Livestock, Poultry and Grain Market News

St. Joseph, Missouri

Phone: 816-676-7000

stjoe.lpgmn@ams.usda.gov