

Daily Direct Steer and Heifer Slaughter Cattle Summary

For Trade on:

Friday, July 01, 2022

LM CT100	5-AREA	LM CT109
Neg. Cash Volume:	1,758	Dressed Formula Vol: 37,404
Live Steer Avg:	\$147.73	Steer/Heifer Avg: \$230.08
Live Heifer Avg:	\$151.00	Dressed Neg. Grid Vol: 3,038
Dressed Steer Avg:	\$234.73	Steer/Heifer Avg: \$228.81
Dressed Heifer Avg:	\$236.00	TOTAL VOLUME: 42,200
LM CT106	TOTAL WK TO DATE VOLUME:	271,389
Committed:	90,753	Delivered: 79,529

LM CT118	TX-OK-NM	LM CT109
Neg. Cash Volume:	80	Dressed Formula Vol: 9,279
Live Steer Avg:	N/A	Steer/Heifer Avg: \$220.25
Live Heifer Avg:	N/A	Dressed Neg. Grid Vol: 0
Dressed Steer Avg:	N/A	Steer/Heifer Avg: N/A
Dressed Heifer Avg:	N/A	TOTAL VOLUME: 9,359
LM CT106	TOTAL WK TO DATE VOLUME:	75,232
Committed:	36,661	Delivered: 22,271

LM CT121	KANSAS	LM CT109
Neg. Cash Volume:	68	Dressed Formula Vol: 12,493
Live Steer Avg:	N/A	Steer/Heifer Avg: \$224.20
Live Heifer Avg:	N/A	Dressed Neg. Grid Vol: 1,053
Dressed Steer Avg:	\$234.00	Steer/Heifer Avg: \$221.09
Dressed Heifer Avg:	N/A	TOTAL VOLUME: 13,614
LM CT106	TOTAL WK TO DATE VOLUME:	72,164
Committed:	21,314	Delivered: 18,292

LM CT124	NEBRASKA	LM CT109
Neg. Cash Volume:	450	Dressed Formula Vol: 8,451
Live Steer Avg:	\$148.00	Steer/Heifer Avg: \$243.82
Live Heifer Avg:	N/A	Dressed Neg. Grid Vol: 774
Dressed Steer Avg:	\$237.00	Steer/Heifer Avg: \$234.07
Dressed Heifer Avg:	\$236.00	TOTAL VOLUME: 9,675
LM CT106	TOTAL WK TO DATE VOLUME:	68,187
Committed:	14,287	Delivered: 22,654

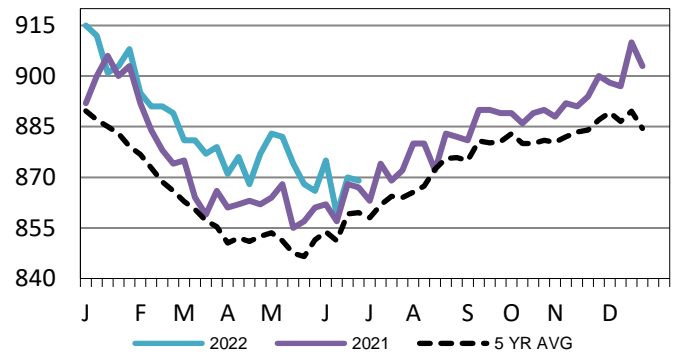
LM CT134	COLORADO	LM CT109
Neg. Cash Volume:	0	Dressed Formula Vol: 4,954
Live Steer Avg:	N/A	Steer/Heifer Avg: \$234.17
Live Heifer Avg:	N/A	Dressed Neg. Grid Vol: 493
Dressed Steer Avg:	N/A	Steer/Heifer Avg: \$234.54
Dressed Heifer Avg:	N/A	TOTAL VOLUME: 5,447
LM CT106	TOTAL WK TO DATE VOLUME:	23,242
Committed:	13,343	Delivered: 6,165

LM CT137	IA-MN	LM CT109
Neg. Cash Volume:	1,160	Dressed Formula Vol: 2,306
Live Steer Avg:	\$147.65	Steer/Heifer Avg: \$242.71
Live Heifer Avg:	\$151.00	Dressed Neg. Grid Vol: 718
Dressed Steer Avg:	\$230.00	Steer/Heifer Avg: \$230.53
Dressed Heifer Avg:	N/A	TOTAL VOLUME: 4,184
LM CT106	TOTAL WK TO DATE VOLUME:	32,182
Committed:	5,148	Delivered: 10,147

For Friday cash trading was mostly inactive on light demand in Kansas, Nebraska and Western Cornbelt. In Texas and Colorado cash trading was at a standstill. In Texas Thursday was the last reported market with live at 137.00. In the Western Cornbelt Thursday was the last reported live market at 148.00 and Wednesday was the last reported dressed market at 234.00. Wednesday was the last reported market in Kansas with live at 138.00. Wednesday was reported market in Nebraska with live and dressed from 145.00-151.00 and at 234.00, respectively. Last week in Colorado live traded at 145.00.

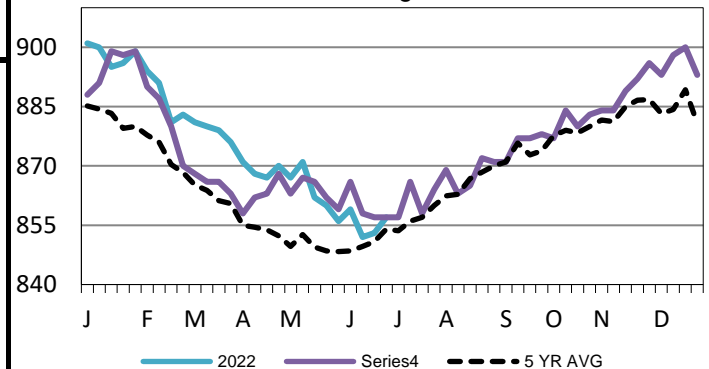
Kansas Formula Carcass Weights

WE 6-26-22 Weight = 869 lbs



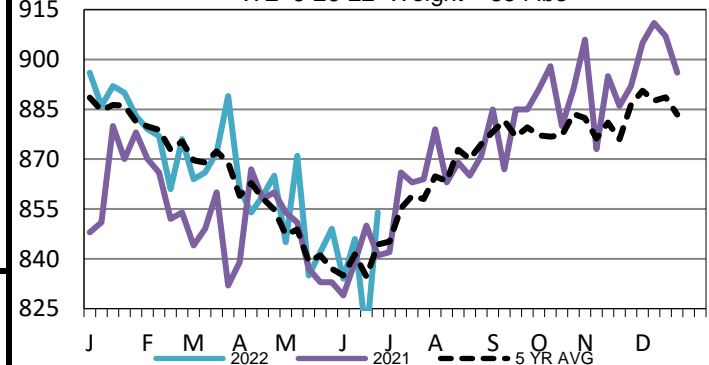
5-Area Formula Carcass Weight

WE 6-26-22 Weight = 857 lbs



Colorado Formula Carcass Weights

WE 6-26-22 Weight = 854 lbs



USDA Livestock, Poultry and Grain Market News

St. Joseph, Missouri

Phone: 816-676-7000

stjoe.lpgmn@ams.usda.gov