

Daily Direct Steer and Heifer Slaughter Cattle Summary

For Trade on:

Thursday, June 30, 2022

LM CT100	5-AREA	LM CT109
Neg. Cash Volume:	7,822	Dressed Formula Vol: 42,327
Live Steer Avg:	\$146.80	Steer/Heifer Avg: \$229.41
Live Heifer Avg:	\$147.41	Dressed Neg. Grid Vol: 2,476
Dressed Steer Avg:	\$232.95	Steer/Heifer Avg: \$232.64
Dressed Heifer Avg:	\$236.00	TOTAL VOLUME: 52,625
LM CT106	TOTAL WK TO DATE VOLUME:	229,189
Committed:	54,218	Delivered: 72,900

LM CT118	TX-OK-NM	LM CT109
Neg. Cash Volume:	1,215	Dressed Formula Vol: 13,555
Live Steer Avg:	\$137.00	Steer/Heifer Avg: \$220.37
Live Heifer Avg:	\$137.00	Dressed Neg. Grid Vol: 0
Dressed Steer Avg:	N/A	Steer/Heifer Avg: N/A
Dressed Heifer Avg:	N/A	TOTAL VOLUME: 14,770
LM CT106	TOTAL WK TO DATE VOLUME:	65,873
Committed:	13,831	Delivered: 20,908

LM CT121	KANSAS	LM CT109
Neg. Cash Volume:	113	Dressed Formula Vol: 12,264
Live Steer Avg:	\$139.17	Steer/Heifer Avg: \$225.42
Live Heifer Avg:	N/A	Dressed Neg. Grid Vol: 65
Dressed Steer Avg:	N/A	Steer/Heifer Avg: \$223.68
Dressed Heifer Avg:	N/A	TOTAL VOLUME: 12,442
LM CT106	TOTAL WK TO DATE VOLUME:	58,550
Committed:	14,915	Delivered: 20,012

LM CT124	NEBRASKA	LM CT109
Neg. Cash Volume:	1,585	Dressed Formula Vol: 9,856
Live Steer Avg:	\$148.00	Steer/Heifer Avg: \$237.99
Live Heifer Avg:	\$146.50	Dressed Neg. Grid Vol: 1,447
Dressed Steer Avg:	\$234.00	Steer/Heifer Avg: \$232.52
Dressed Heifer Avg:	N/A	TOTAL VOLUME: 12,888
LM CT106	TOTAL WK TO DATE VOLUME:	58,512
Committed:	15,930	Delivered: 19,912

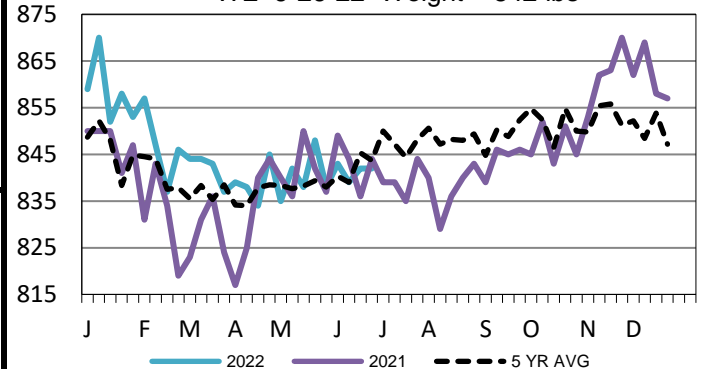
LM CT134	COLORADO	LM CT109
Neg. Cash Volume:	0	Dressed Formula Vol: 5,339
Live Steer Avg:	N/A	Steer/Heifer Avg: \$243.26
Live Heifer Avg:	N/A	Dressed Neg. Grid Vol: 304
Dressed Steer Avg:	N/A	Steer/Heifer Avg: \$234.20
Dressed Heifer Avg:	N/A	TOTAL VOLUME: 5,643
LM CT106	TOTAL WK TO DATE VOLUME:	17,795
Committed:	2,944	Delivered: 4,602

LM CT137	IA-MN	LM CT109
Neg. Cash Volume:	4,909	Dressed Formula Vol: 1,644
Live Steer Avg:	\$148.04	Steer/Heifer Avg: \$240.91
Live Heifer Avg:	\$148.42	Dressed Neg. Grid Vol: 660
Dressed Steer Avg:	\$230.95	Steer/Heifer Avg: \$233.08
Dressed Heifer Avg:	\$236.00	TOTAL VOLUME: 7,213
LM CT106	TOTAL WK TO DATE VOLUME:	27,998
Committed:	6,598	Delivered: 7,466

Thursday cash trading in the Texas Panhandle was slow on light demand. Compared to the last reported market on Wednesday live have traded 1.00 lower at 137.00. In the Western Cornbelt cash trading was slow on moderate demand. Compared to the last reported market on Wednesday live traded unevenly steady at 148.00. Wednesday was the last reported dressed purchase market at 234.00. Thursday in Nebraska cash trading was limited on light demand. In Kansas and Colorado cash trading was mostly inactive with very light demand. Wednesday in Kansas live purchases traded at 138.00. Wednesday in Nebraska live and dressed purchases traded from 145.00-151.00 and at 234.00, respectively. Last week in Colorado live purchases traded at 145.00.

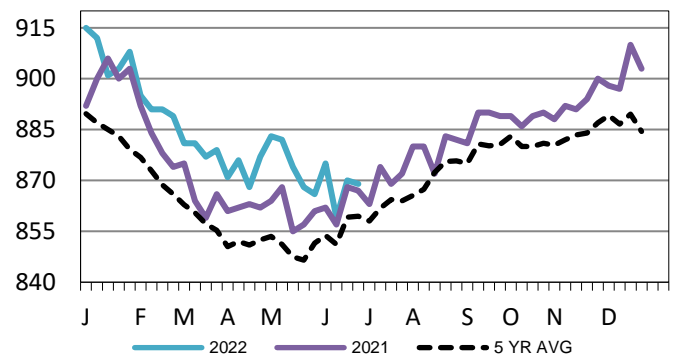
TX-OK-NM Formula Carcass Weights

WE 6-26-22 Weight = 842 lbs



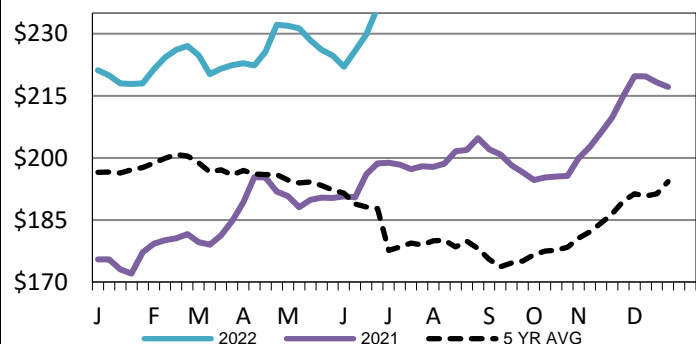
Kansas Formula Carcass Weights

WE 6-26-22 Weight = 869 lbs



Iowa-Minnesota Wkly Dress Steer Wtd Avg

WE 6-26-22 Price = \$236.29



USDA Livestock, Poultry and Grain Market News

St. Joseph, Missouri

Phone: 816-676-7000

stjoe.lpgmn@ams.usda.gov