

## Daily Direct Steer and Heifer Slaughter Cattle Summary

For Trade on:

Monday, June 27, 2022

<a href="#">LM CT100</a>	<b>5-AREA</b>	<a href="#">LM CT109</a>
<b>Neg. Cash Volume:</b>	1,400	<b>Dressed Formula Vol:</b> 54,940
Live Steer Avg:	\$137.00	Steer/Heifer Avg: \$226.01
Live Heifer Avg:	\$147.20	<b>Dressed Neg. Grid Vol:</b> 4,980
Dressed Steer Avg:	N/A	Steer/Heifer Avg: \$224.07
Dressed Heifer Avg:	N/A	<b>TOTAL VOLUME:</b> 61,320
<a href="#">LM CT106</a>	<b>TOTAL WK TO DATE VOLUME:</b>	<b>61,320</b>
<b>Committed:</b>	<b>57,342</b>	<b>Delivered:</b> 75,148

<a href="#">LM CT118</a>	<b>TX-OK-NM</b>	<a href="#">LM CT109</a>
<b>Neg. Cash Volume:</b>	306	<b>Dressed Formula Vol:</b> 23,343
Live Steer Avg:	\$137.00	Steer/Heifer Avg: \$223.07
Live Heifer Avg:	\$137.00	<b>Dressed Neg. Grid Vol:</b> 281
Dressed Steer Avg:	N/A	Steer/Heifer Avg: \$222.73
Dressed Heifer Avg:	N/A	<b>TOTAL VOLUME:</b> 23,930
<a href="#">LM CT106</a>	<b>TOTAL WK TO DATE VOLUME:</b>	<b>23,930</b>
<b>Committed:</b>	<b>11,778</b>	<b>Delivered:</b> 20,182

<a href="#">LM CT121</a>	<b>KANSAS</b>	<a href="#">LM CT109</a>
<b>Neg. Cash Volume:</b>	0	<b>Dressed Formula Vol:</b> 19,134
Live Steer Avg:	N/A	Steer/Heifer Avg: \$224.11
Live Heifer Avg:	N/A	<b>Dressed Neg. Grid Vol:</b> 2,255
Dressed Steer Avg:	N/A	Steer/Heifer Avg: \$221.92
Dressed Heifer Avg:	N/A	<b>TOTAL VOLUME:</b> 21,389
<a href="#">LM CT106</a>	<b>TOTAL WK TO DATE VOLUME:</b>	<b>21,389</b>
<b>Committed:</b>	<b>21,743</b>	<b>Delivered:</b> 19,195

<a href="#">LM CT124</a>	<b>NEBRASKA</b>	<a href="#">LM CT109</a>
<b>Neg. Cash Volume:</b>	1,055	<b>Dressed Formula Vol:</b> 6,660
Live Steer Avg:	N/A	Steer/Heifer Avg: \$236.08
Live Heifer Avg:	\$148.00	<b>Dressed Neg. Grid Vol:</b> 1,341
Dressed Steer Avg:	N/A	Steer/Heifer Avg: \$225.43
Dressed Heifer Avg:	N/A	<b>TOTAL VOLUME:</b> 9,056
<a href="#">LM CT106</a>	<b>TOTAL WK TO DATE VOLUME:</b>	<b>7,715</b>
<b>Committed:</b>	<b>15,537</b>	<b>Delivered:</b> 17,842

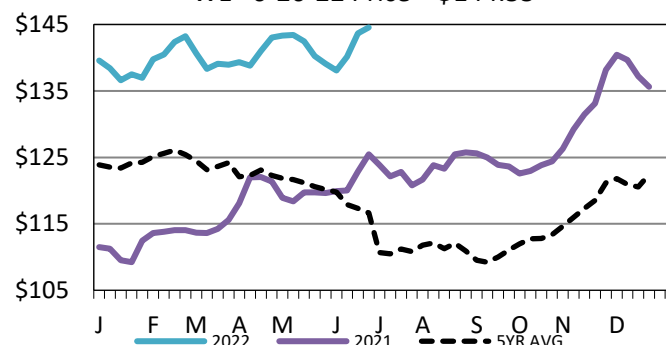
<a href="#">LM CT134</a>	<b>COLORADO</b>	<a href="#">LM CT109</a>
<b>Neg. Cash Volume:</b>	0	<b>Dressed Formula Vol:</b> 4,474
Live Steer Avg:	N/A	Steer/Heifer Avg: \$231.09
Live Heifer Avg:	N/A	<b>Dressed Neg. Grid Vol:</b> 346
Dressed Steer Avg:	N/A	Steer/Heifer Avg: \$226.34
Dressed Heifer Avg:	N/A	<b>TOTAL VOLUME:</b> 4,820
<a href="#">LM CT106</a>	<b>TOTAL WK TO DATE VOLUME:</b>	<b>4,820</b>
<b>Committed:</b>	<b>2,482</b>	<b>Delivered:</b> 7,849

<a href="#">LM CT137</a>	<b>IA-MN</b>	<a href="#">LM CT109</a>
<b>Neg. Cash Volume:</b>	39	<b>Dressed Formula Vol:</b> 1,495
Live Steer Avg:	N/A	Steer/Heifer Avg: \$236.69
Live Heifer Avg:	N/A	<b>Dressed Neg. Grid Vol:</b> 912
Dressed Steer Avg:	N/A	Steer/Heifer Avg: \$228.79
Dressed Heifer Avg:	N/A	<b>TOTAL VOLUME:</b> 2,446
<a href="#">LM CT106</a>	<b>TOTAL WK TO DATE VOLUME:</b>	<b>2,446</b>
<b>Committed:</b>	<b>5,802</b>	<b>Delivered:</b> 10,080

Monday cash trading was at a standstill in Kansas and Colorado. In the Texas Panhandle and Western Cornbelt cash trading was mostly inactive on very light demand. In Nebraska cash trading was limited on very light demand. Not enough trades for a market trend in any region. Last week in the Texas Panhandle live traded at 138.00. In Kansas live traded from 137.00-138.00. For the prior week in Nebraska live and dressed traded from 145.00-148.00 and at 234.00, respectively. In Colorado live traded at 145.00. For the previous week in the Western Cornbelt live and dressed traded from 145.00-150.00 and 234.00-240.00, respectively.

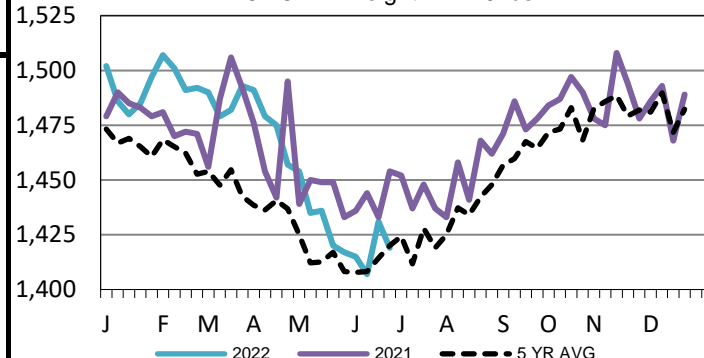
## 5-Area Live Steer Weighted Average

WE 6-26-22 Price = \$144.55



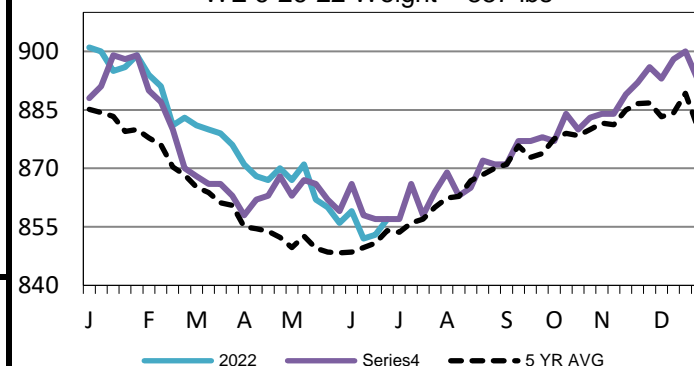
## 5-Area Negotiated Cash Live Steer Weights

WE 6-26-22 Weight = 1419 lbs



## 5-Area Formula Carcass Weight

WE 6-26-22 Weight = 857 lbs



## USDA Livestock, Poultry and Grain Market News

St. Joseph, Missouri

Phone: 816-676-7000

[stjoe.lpgmn@ams.usda.gov](mailto:stjoe.lpgmn@ams.usda.gov)