

Daily Direct Steer and Heifer Slaughter Cattle Summary

For Trade on:

Wednesday, June 22, 2022

LM CT100	5-AREA	LM CT109
Neg. Cash Volume:	23,517	Dressed Formula Vol: 25,963
Live Steer Avg:	\$141.33	Steer/Heifer Avg: \$227.11
Live Heifer Avg:	\$139.68	Dressed Neg. Grid Vol: 3,194
Dressed Steer Avg:	\$238.00	Steer/Heifer Avg: \$225.72
Dressed Heifer Avg:	\$238.76	TOTAL VOLUME: 52,674
LM CT106	TOTAL WK TO DATE VOLUME:	161,403
Committed:	114,651	Delivered: 69,683

LM CT118	TX-OK-NM	LM CT109
Neg. Cash Volume:	3,007	Dressed Formula Vol: 9,787
Live Steer Avg:	\$137.24	Steer/Heifer Avg: \$223.91
Live Heifer Avg:	\$137.42	Dressed Neg. Grid Vol: 0
Dressed Steer Avg:	N/A	Steer/Heifer Avg: N/A
Dressed Heifer Avg:	N/A	TOTAL VOLUME: 12,794
LM CT106	TOTAL WK TO DATE VOLUME:	52,361
Committed:	42,902	Delivered: 19,227

LM CT121	KANSAS	LM CT109
Neg. Cash Volume:	9,440	Dressed Formula Vol: 10,016
Live Steer Avg:	\$139.11	Steer/Heifer Avg: \$225.07
Live Heifer Avg:	\$137.64	Dressed Neg. Grid Vol: 568
Dressed Steer Avg:	\$228.00	Steer/Heifer Avg: \$220.78
Dressed Heifer Avg:	\$228.00	TOTAL VOLUME: 20,024
LM CT106	TOTAL WK TO DATE VOLUME:	52,271
Committed:	33,543	Delivered: 18,943

LM CT124	NEBRASKA	LM CT109
Neg. Cash Volume:	2,148	Dressed Formula Vol: 5,035
Live Steer Avg:	\$145.00	Steer/Heifer Avg: \$233.03
Live Heifer Avg:	\$145.00	Dressed Neg. Grid Vol: 1,602
Dressed Steer Avg:	\$239.45	Steer/Heifer Avg: \$225.14
Dressed Heifer Avg:	\$239.14	TOTAL VOLUME: 8,785
LM CT106	TOTAL WK TO DATE VOLUME:	30,021
Committed:	21,144	Delivered: 17,691

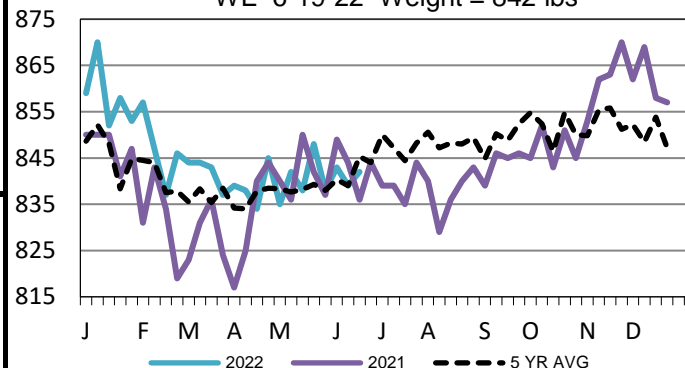
LM CT134	COLORADO	LM CT109
Neg. Cash Volume:	288	Dressed Formula Vol: 490
Live Steer Avg:	\$138.00	Steer/Heifer Avg: \$267.68
Live Heifer Avg:	N/A	Dressed Neg. Grid Vol: 0
Dressed Steer Avg:	N/A	Steer/Heifer Avg: N/A
Dressed Heifer Avg:	N/A	TOTAL VOLUME: 778
LM CT106	TOTAL WK TO DATE VOLUME:	10,835
Committed:	5,793	Delivered: 6,021

LM CT137	IA-MN	LM CT109
Neg. Cash Volume:	8,634	Dressed Formula Vol: 748
Live Steer Avg:	\$146.09	Steer/Heifer Avg: \$230.94
Live Heifer Avg:	\$146.14	Dressed Neg. Grid Vol: 1,066
Dressed Steer Avg:	\$237.62	Steer/Heifer Avg: \$229.32
Dressed Heifer Avg:	\$239.14	TOTAL VOLUME: 10,448
LM CT106	TOTAL WK TO DATE VOLUME:	16,471
Committed:	11,269	Delivered: 7,801

Wednesday in Kansas cash trading and demand were moderate. Compared to last week live traded unevenly steady from 137.00-141.00. In Texas cash trading was slow on light to moderate demand. Compared to the last reported market on Tuesday live traded 1.00 lower at 137.00. Wednesday in the Western Cornbelt cash trading was slow to moderate with moderate demand. Compared to last week live traded 2.00-3.00 higher from 147.00-148.00 and dressed traded 8.00-10.00 higher from 238.00-240.00. In the Northern Plains cash trading was limited on light demand. For the prior week live traded at 145.00 and, in Nebraska, dressed traded at 230.00.

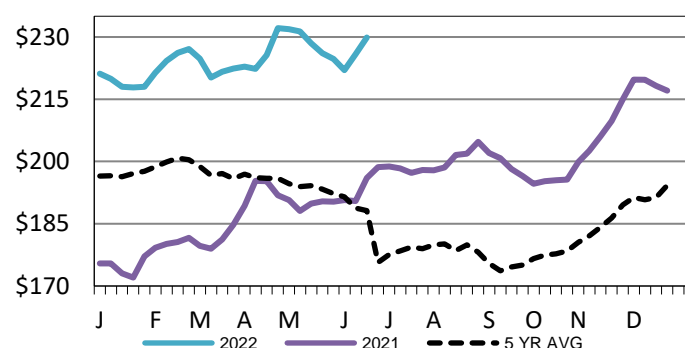
TX-OK-NM Formula Carcass Weights

WE 6-19-22 Weight = 842 lbs



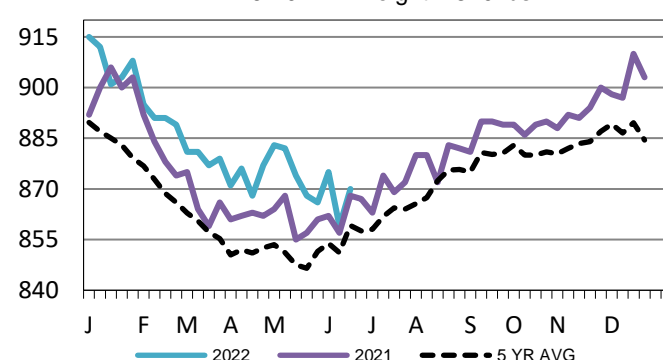
Iowa-Minnesota Wkly Dress Steer Wtd Avg

WE 6-19-22 Price = \$229.86



Kansas Formula Carcass Weights

WE 6-19-22 Weight = 870 lbs



USDA Livestock, Poultry and Grain Market News

St. Joseph, Missouri

Phone: 816-676-7000

stjoe.lpgmn@ams.usda.gov