

Daily Direct Steer and Heifer Slaughter Cattle Summary

For Trade on:

Wednesday, June 15, 2022

LM CT100	5-AREA	LM CT109
Neg. Cash Volume:	15,854	Dressed Formula Vol: 31,615
Live Steer Avg:	\$144.89	Steer/Heifer Avg: \$222.43
Live Heifer Avg:	\$144.69	Dressed Neg. Grid Vol: 2,950
Dressed Steer Avg:	\$231.38	Steer/Heifer Avg: \$226.30
Dressed Heifer Avg:	\$230.12	TOTAL VOLUME: 50,419
LM CT106	TOTAL WK TO DATE VOLUME:	201,924
Committed:	87,415	Delivered: 75,252

LM CT118	TX-OK-NM	LM CT109
Neg. Cash Volume:	112	Dressed Formula Vol: 12,913
Live Steer Avg:	N/A	Steer/Heifer Avg: \$218.98
Live Heifer Avg:	N/A	Dressed Neg. Grid Vol: 0
Dressed Steer Avg:	N/A	Steer/Heifer Avg: N/A
Dressed Heifer Avg:	N/A	TOTAL VOLUME: 13,025
LM CT106	TOTAL WK TO DATE VOLUME:	52,483
Committed:	19,491	Delivered: 20,855

LM CT121	KANSAS	LM CT109
Neg. Cash Volume:	801	Dressed Formula Vol: 9,752
Live Steer Avg:	\$138.42	Steer/Heifer Avg: \$220.30
Live Heifer Avg:	\$138.00	Dressed Neg. Grid Vol: 470
Dressed Steer Avg:	N/A	Steer/Heifer Avg: \$221.12
Dressed Heifer Avg:	N/A	TOTAL VOLUME: 11,023
LM CT106	TOTAL WK TO DATE VOLUME:	42,797
Committed:	18,913	Delivered: 20,363

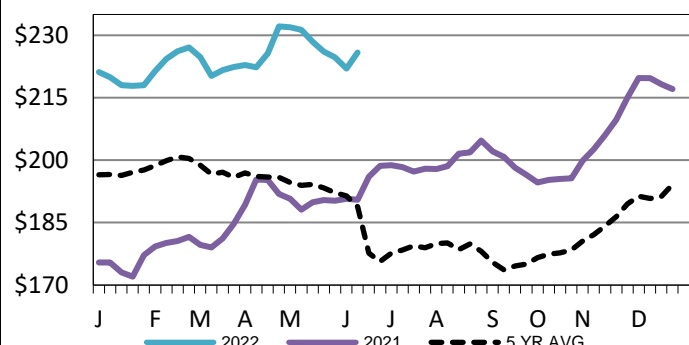
LM CT124	NEBRASKA	LM CT109
Neg. Cash Volume:	6,406	Dressed Formula Vol: 7,223
Live Steer Avg:	\$146.47	Steer/Heifer Avg: \$228.87
Live Heifer Avg:	\$145.75	Dressed Neg. Grid Vol: 1,537
Dressed Steer Avg:	\$231.87	Steer/Heifer Avg: \$227.43
Dressed Heifer Avg:	\$230.00	TOTAL VOLUME: 15,166
LM CT106	TOTAL WK TO DATE VOLUME:	62,205
Committed:	29,358	Delivered: 18,454

LM CT134	COLORADO	LM CT109
Neg. Cash Volume:	0	Dressed Formula Vol: 445
Live Steer Avg:	N/A	Steer/Heifer Avg: \$242.67
Live Heifer Avg:	N/A	Dressed Neg. Grid Vol: 45
Dressed Steer Avg:	N/A	Steer/Heifer Avg: \$227.38
Dressed Heifer Avg:	N/A	TOTAL VOLUME: 490
LM CT106	TOTAL WK TO DATE VOLUME:	11,536
Committed:	6,217	Delivered: 8,127

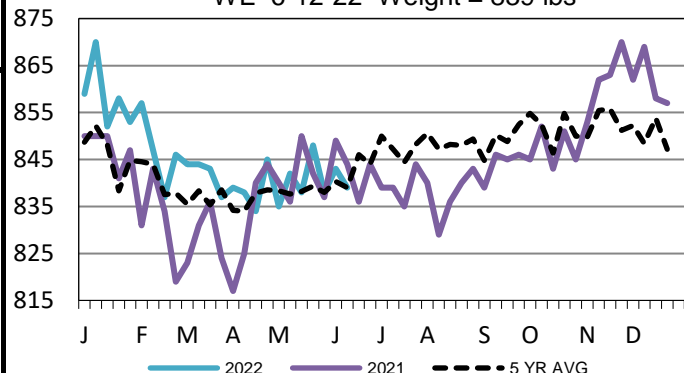
LM CT137	IA-MN	LM CT109
Neg. Cash Volume:	8,535	Dressed Formula Vol: 1,393
Live Steer Avg:	\$144.42	Steer/Heifer Avg: \$230.32
Live Heifer Avg:	\$145.50	Dressed Neg. Grid Vol: 898
Dressed Steer Avg:	\$230.00	Steer/Heifer Avg: \$227.01
Dressed Heifer Avg:	\$230.20	TOTAL VOLUME: 10,826
LM CT106	TOTAL WK TO DATE VOLUME:	33,316
Committed:	13,436	Delivered: 7,453

Wednesday in Nebraska and Western Cornbelt cash trading was slow to moderate with moderate to good demand. In Nebraska a few live traded from 145.00-147.00 and dressed traded at 230.00. Not enough trades for a full market trend. Tuesday was the last reported market with live and dressed at 145.00 and at 230.00, respectively. In the Western Cornbelt live traded unevenly steady from 140.00-146.00 and dressed traded steady at 230.00, compared to the last reported market on Tuesday. Wednesday in the Southern Plains and Colorado cash trading was mostly inactive on light demand. Not enough trades for a market trend in these regions. Tuesday saw the last reported market in Texas and Colorado with live from 136.00-138.00 and 145.00, respectively. Last week in Kansas live traded at 138.00.

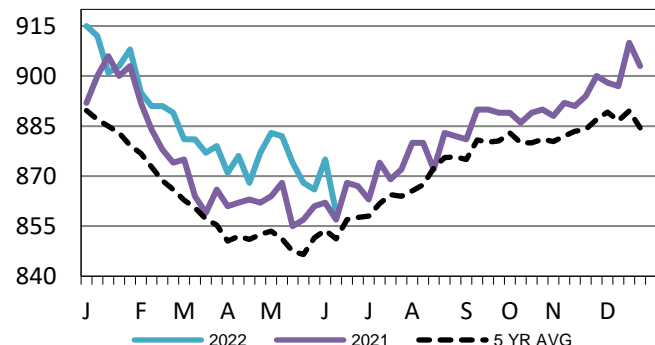
Iowa-Minnesota Wkly Dress Steer Wtd Avg
WE 6-12-22 Price = \$225.86



TX-OK-NM Formula Carcass Weights
WE 6-12-22 Weight = 839 lbs



Kansas Formula Carcass Weights
WE 6-12-22 Weight = 859 lbs



USDA Livestock, Poultry and Grain Market News

St. Joseph, Missouri

Phone: 816-676-7000

stjoe.lpgmn@ams.usda.gov