

## Daily Direct Steer and Heifer Slaughter Cattle Summary

For Trade on:

Friday, June 10, 2022

<a href="#">LM CT100</a>	<b>5-AREA</b>	<a href="#">LM CT109</a>
<b>Neg. Cash Volume:</b>	13,458	<b>Dressed Formula Vol:</b> 51,001
Live Steer Avg:	\$138.17	Steer/Heifer Avg: \$219.66
Live Heifer Avg:	\$137.67	<b>Dressed Neg. Grid Vol:</b> 5,175
Dressed Steer Avg:	\$227.18	Steer/Heifer Avg: \$226.83
Dressed Heifer Avg:	\$225.00	<b>TOTAL VOLUME:</b> 69,634
<a href="#">LM CT106</a>	<b>TOTAL WK TO DATE VOLUME:</b>	<b>320,970</b>
<b>Committed:</b>	<b>66,159</b>	<b>Delivered:</b> 94,758

<a href="#">LM CT118</a>	<b>TX-OK-NM</b>	<a href="#">LM CT109</a>
<b>Neg. Cash Volume:</b>	1,372	<b>Dressed Formula Vol:</b> 15,616
Live Steer Avg:	\$137.00	Steer/Heifer Avg: \$213.77
Live Heifer Avg:	\$137.00	<b>Dressed Neg. Grid Vol:</b> 0
Dressed Steer Avg:	N/A	Steer/Heifer Avg: N/A
Dressed Heifer Avg:	N/A	<b>TOTAL VOLUME:</b> 16,988
<a href="#">LM CT106</a>	<b>TOTAL WK TO DATE VOLUME:</b>	<b>103,334</b>
<b>Committed:</b>	<b>12,124</b>	<b>Delivered:</b> 24,885

<a href="#">LM CT121</a>	<b>KANSAS</b>	<a href="#">LM CT109</a>
<b>Neg. Cash Volume:</b>	9,986	<b>Dressed Formula Vol:</b> 20,437
Live Steer Avg:	\$137.41	Steer/Heifer Avg: \$218.53
Live Heifer Avg:	\$137.00	<b>Dressed Neg. Grid Vol:</b> 1,619
Dressed Steer Avg:	N/A	Steer/Heifer Avg: \$222.72
Dressed Heifer Avg:	N/A	<b>TOTAL VOLUME:</b> 32,042
<a href="#">LM CT106</a>	<b>TOTAL WK TO DATE VOLUME:</b>	<b>91,253</b>
<b>Committed:</b>	<b>29,476</b>	<b>Delivered:</b> 25,156

<a href="#">LM CT124</a>	<b>NEBRASKA</b>	<a href="#">LM CT109</a>
<b>Neg. Cash Volume:</b>	799	<b>Dressed Formula Vol:</b> 8,353
Live Steer Avg:	\$143.00	Steer/Heifer Avg: \$228.78
Live Heifer Avg:	\$141.00	<b>Dressed Neg. Grid Vol:</b> 2,053
Dressed Steer Avg:	N/A	Steer/Heifer Avg: \$228.66
Dressed Heifer Avg:	\$225.00	<b>TOTAL VOLUME:</b> 11,205
<a href="#">LM CT106</a>	<b>TOTAL WK TO DATE VOLUME:</b>	<b>73,334</b>
<b>Committed:</b>	<b>14,179</b>	<b>Delivered:</b> 24,517

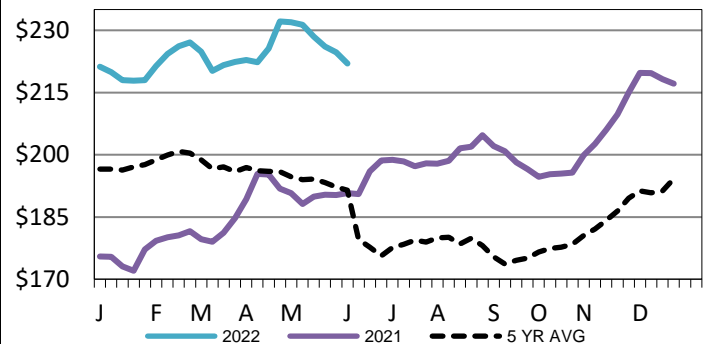
<a href="#">LM CT134</a>	<b>COLORADO</b>	<a href="#">LM CT109</a>
<b>Neg. Cash Volume:</b>	0	<b>Dressed Formula Vol:</b> 4,372
Live Steer Avg:	N/A	Steer/Heifer Avg: \$223.67
Live Heifer Avg:	N/A	<b>Dressed Neg. Grid Vol:</b> 90
Dressed Steer Avg:	N/A	Steer/Heifer Avg: \$227.67
Dressed Heifer Avg:	N/A	<b>TOTAL VOLUME:</b> 4,462
<a href="#">LM CT106</a>	<b>TOTAL WK TO DATE VOLUME:</b>	<b>20,997</b>
<b>Committed:</b>	<b>2,372</b>	<b>Delivered:</b> 4,401

<a href="#">LM CT137</a>	<b>IA-MN</b>	<a href="#">LM CT109</a>
<b>Neg. Cash Volume:</b>	1,301	<b>Dressed Formula Vol:</b> 2,401
Live Steer Avg:	\$143.31	Steer/Heifer Avg: \$229.17
Live Heifer Avg:	\$145.00	<b>Dressed Neg. Grid Vol:</b> 1,447
Dressed Steer Avg:	\$227.18	Steer/Heifer Avg: \$228.87
Dressed Heifer Avg:	\$225.00	<b>TOTAL VOLUME:</b> 5,149
<a href="#">LM CT106</a>	<b>TOTAL WK TO DATE VOLUME:</b>	<b>33,118</b>
<b>Committed:</b>	<b>8,008</b>	<b>Delivered:</b> 15,799

Friday in Kansas cash trading was slow to moderate with moderate demand. Compared to last week the bulk of live traded 2.00 higher at 137.00, with a few up to 140.00. In Texas cash trading was limited on light demand. A few live traded at 137.00. Not enough trades for a full market trend. Wednesday was the last reported market with live at 136.00. For Friday in Nebraska and Western Cornbelt cash trading was limited on light demand. In Colorado cash trading was at a standstill. Not enough trades in these regions for a market trend. Wednesday was the last reported market in these feeding areas. In Nebraska live traded from 142.00-143.00 and dressed from 225.00-226.00. In the Western Cornbelt live traded from 142.00-143.00 and dressed, on a light test, at 225.00. In Colorado live traded at 141.00.

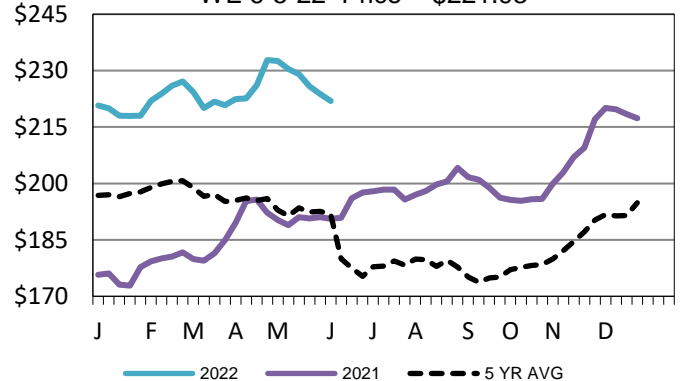
## Iowa-Minnesota Wkly Dress Steer Wtd Avg

WE 6-5-22 Price = \$222.00



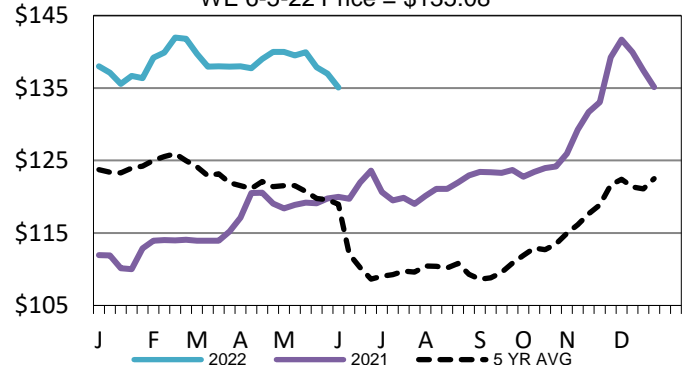
## Nebraska Weekly Dressed Steer Weighted Avg

WE 6-5-22 Price = \$221.93



## Kansas Weekly Live Steer Weighted Average

WE 6-5-22 Price = \$135.08



## USDA Livestock, Poultry and Grain Market News

St. Joseph, Missouri

Phone: 816-676-7000

[stjoe.lpgmn@ams.usda.gov](mailto:stjoe.lpgmn@ams.usda.gov)