

## Daily Direct Steer and Heifer Slaughter Cattle Summary

For Trade on:

Wednesday, June 08, 2022

<a href="#">LM CT100</a>	<b>5-AREA</b>	<a href="#">LM CT109</a>
<b>Neg. Cash Volume:</b>	35,193	<b>Dressed Formula Vol:</b> 35,768
Live Steer Avg:	\$140.40	Steer/Heifer Avg: \$222.63
Live Heifer Avg:	\$139.56	<b>Dressed Neg. Grid Vol:</b> 3,695
Dressed Steer Avg:	\$226.14	Steer/Heifer Avg: \$230.36
Dressed Heifer Avg:	\$226.00	<b>TOTAL VOLUME:</b> 74,656
<a href="#">LM CT106</a>	<b>TOTAL WK TO DATE VOLUME:</b>	<b>204,061</b>
<b>Committed:</b>	<b>112,817</b>	<b>Delivered:</b> 78,260

<a href="#">LM CT118</a>	<b>TX-OK-NM</b>	<a href="#">LM CT109</a>
<b>Neg. Cash Volume:</b>	6,949	<b>Dressed Formula Vol:</b> 17,174
Live Steer Avg:	\$136.00	Steer/Heifer Avg: \$219.47
Live Heifer Avg:	\$136.00	<b>Dressed Neg. Grid Vol:</b> 0
Dressed Steer Avg:	N/A	Steer/Heifer Avg: N/A
Dressed Heifer Avg:	N/A	<b>TOTAL VOLUME:</b> 24,123
<a href="#">LM CT106</a>	<b>TOTAL WK TO DATE VOLUME:</b>	<b>72,854</b>
<b>Committed:</b>	<b>40,778</b>	<b>Delivered:</b> 23,142

<a href="#">LM CT121</a>	<b>KANSAS</b>	<a href="#">LM CT109</a>
<b>Neg. Cash Volume:</b>	1,001	<b>Dressed Formula Vol:</b> 9,296
Live Steer Avg:	\$137.73	Steer/Heifer Avg: \$221.47
Live Heifer Avg:	\$140.00	<b>Dressed Neg. Grid Vol:</b> 289
Dressed Steer Avg:	\$224.00	Steer/Heifer Avg: \$224.53
Dressed Heifer Avg:	N/A	<b>TOTAL VOLUME:</b> 10,586
<a href="#">LM CT106</a>	<b>TOTAL WK TO DATE VOLUME:</b>	<b>45,748</b>
<b>Committed:</b>	<b>16,314</b>	<b>Delivered:</b> 18,893

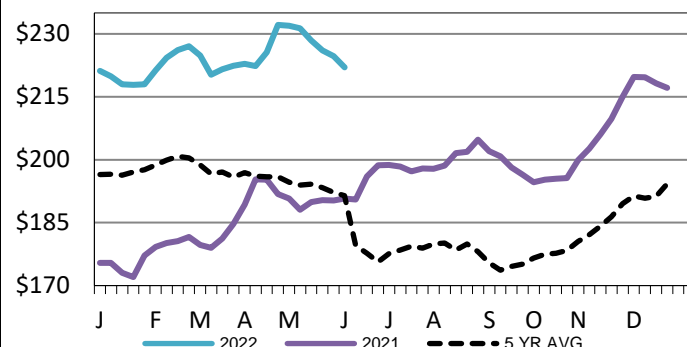
<a href="#">LM CT124</a>	<b>NEBRASKA</b>	<a href="#">LM CT109</a>
<b>Neg. Cash Volume:</b>	15,689	<b>Dressed Formula Vol:</b> 6,888
Live Steer Avg:	\$142.64	Steer/Heifer Avg: \$230.80
Live Heifer Avg:	\$142.68	<b>Dressed Neg. Grid Vol:</b> 2,165
Dressed Steer Avg:	\$226.09	Steer/Heifer Avg: \$230.78
Dressed Heifer Avg:	\$225.89	<b>TOTAL VOLUME:</b> 24,742
<a href="#">LM CT106</a>	<b>TOTAL WK TO DATE VOLUME:</b>	<b>52,214</b>
<b>Committed:</b>	<b>37,678</b>	<b>Delivered:</b> 19,269

<a href="#">LM CT134</a>	<b>COLORADO</b>	<a href="#">LM CT109</a>
<b>Neg. Cash Volume:</b>	1,350	<b>Dressed Formula Vol:</b> 953
Live Steer Avg:	\$141.00	Steer/Heifer Avg: \$219.90
Live Heifer Avg:	\$141.00	<b>Dressed Neg. Grid Vol:</b> 0
Dressed Steer Avg:	N/A	Steer/Heifer Avg: N/A
Dressed Heifer Avg:	N/A	<b>TOTAL VOLUME:</b> 2,303
<a href="#">LM CT106</a>	<b>TOTAL WK TO DATE VOLUME:</b>	<b>11,442</b>
<b>Committed:</b>	<b>6,040</b>	<b>Delivered:</b> 8,923

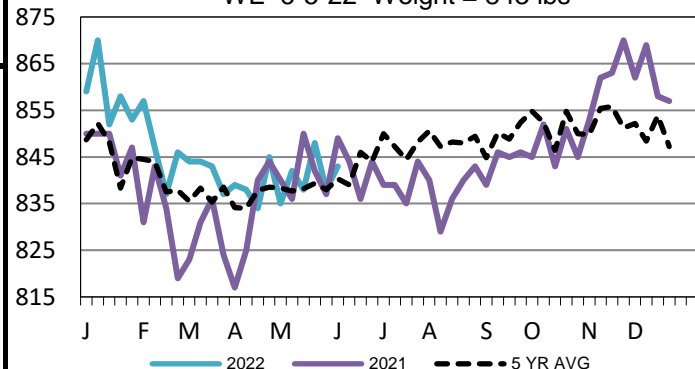
<a href="#">LM CT137</a>	<b>IA-MN</b>	<a href="#">LM CT109</a>
<b>Neg. Cash Volume:</b>	10,204	<b>Dressed Formula Vol:</b> 1,537
Live Steer Avg:	\$142.45	Steer/Heifer Avg: \$230.33
Live Heifer Avg:	\$142.33	<b>Dressed Neg. Grid Vol:</b> 1,241
Dressed Steer Avg:	\$226.39	Steer/Heifer Avg: \$230.99
Dressed Heifer Avg:	\$226.47	<b>TOTAL VOLUME:</b> 12,982
<a href="#">LM CT106</a>	<b>TOTAL WK TO DATE VOLUME:</b>	<b>22,408</b>
<b>Committed:</b>	<b>12,007</b>	<b>Delivered:</b> 8,033

Wednesday cash trading and demand were moderate in Texas and the Northern Plains. Tuesday was the last reported live market in these regions. In Texas live traded steady at 136.00. In Nebraska live traded 1.00-2.00 higher from 142.00-143.00. Compared to last week dressed traded 3.00-4.00 higher from 225.00-226.00, with a few up to 230.00. In Colorado live traded steady at 141.00. Wednesday in the Western Cornbelt cash trading was moderate with good demand. Compared to last week live traded 2.00 higher from 142.00-143.00 and dressed traded 3.00 higher at 222.00, with a few up to 230.00. Wednesday in Kansas cash trading was limited on light demand. Last week live traded at 135.00.

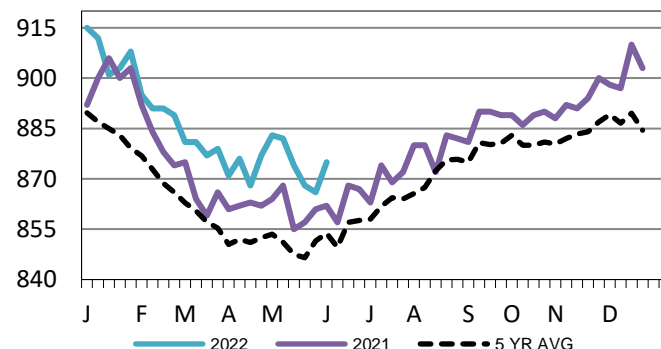
**Iowa-Minnesota Wkly Dress Steer Wtd Avg**  
WE 6-5-22 Price = \$222.00



**TX-OK-NM Formula Carcass Weights**  
WE 6-5-22 Weight = 843 lbs



**Kansas Formula Carcass Weights**  
WE 6-5-22 Weight = 875 lbs



## USDA Livestock, Poultry and Grain Market News

St. Joseph, Missouri

Phone: 816-676-7000

[stjoe.lpgmn@ams.usda.gov](mailto:stjoe.lpgmn@ams.usda.gov)