

## Daily Direct Steer and Heifer Slaughter Cattle Summary

For Trade on:

Friday, June 03, 2022

<a href="#">LM CT100</a>	<b>5-AREA</b>	<a href="#">LM CT109</a>
<b>Neg. Cash Volume:</b>	6,054	<b>Dressed Formula Vol:</b> 57,883
Live Steer Avg:	\$141.54	Steer/Heifer Avg: \$224.63
Live Heifer Avg:	\$141.39	<b>Dressed Neg. Grid Vol:</b> 4,632
Dressed Steer Avg:	\$223.63	Steer/Heifer Avg: \$229.78
Dressed Heifer Avg:	\$224.00	<b>TOTAL VOLUME:</b> 68,569
<a href="#">LM CT106</a>	<b>TOTAL WK TO DATE VOLUME:</b>	<b>258,218</b>
<b>Committed:</b>	<b>66,184</b>	<b>Delivered:</b> 132,381

<a href="#">LM CT118</a>	<b>TX-OK-NM</b>	<a href="#">LM CT109</a>
<b>Neg. Cash Volume:</b>	0	<b>Dressed Formula Vol:</b> 13,725
Live Steer Avg:	N/A	Steer/Heifer Avg: \$219.80
Live Heifer Avg:	N/A	<b>Dressed Neg. Grid Vol:</b> 0
Dressed Steer Avg:	N/A	Steer/Heifer Avg: N/A
Dressed Heifer Avg:	N/A	<b>TOTAL VOLUME:</b> 13,725
<a href="#">LM CT106</a>	<b>TOTAL WK TO DATE VOLUME:</b>	<b>70,525</b>
<b>Committed:</b>	<b>19,193</b>	<b>Delivered:</b> 37,225

<a href="#">LM CT121</a>	<b>KANSAS</b>	<a href="#">LM CT109</a>
<b>Neg. Cash Volume:</b>	1,552	<b>Dressed Formula Vol:</b> 19,862
Live Steer Avg:	\$135.00	Steer/Heifer Avg: \$220.90
Live Heifer Avg:	N/A	<b>Dressed Neg. Grid Vol:</b> 1,573
Dressed Steer Avg:	N/A	Steer/Heifer Avg: \$224.21
Dressed Heifer Avg:	N/A	<b>TOTAL VOLUME:</b> 22,987
<a href="#">LM CT106</a>	<b>TOTAL WK TO DATE VOLUME:</b>	<b>75,455</b>
<b>Committed:</b>	<b>18,184</b>	<b>Delivered:</b> 36,391

<a href="#">LM CT124</a>	<b>NEBRASKA</b>	<a href="#">LM CT109</a>
<b>Neg. Cash Volume:</b>	1,502	<b>Dressed Formula Vol:</b> 9,178
Live Steer Avg:	\$141.89	Steer/Heifer Avg: \$233.63
Live Heifer Avg:	\$139.00	<b>Dressed Neg. Grid Vol:</b> 1,649
Dressed Steer Avg:	\$223.32	Steer/Heifer Avg: \$233.32
Dressed Heifer Avg:	N/A	<b>TOTAL VOLUME:</b> 12,329
<a href="#">LM CT106</a>	<b>TOTAL WK TO DATE VOLUME:</b>	<b>61,235</b>
<b>Committed:</b>	<b>14,341</b>	<b>Delivered:</b> 30,688

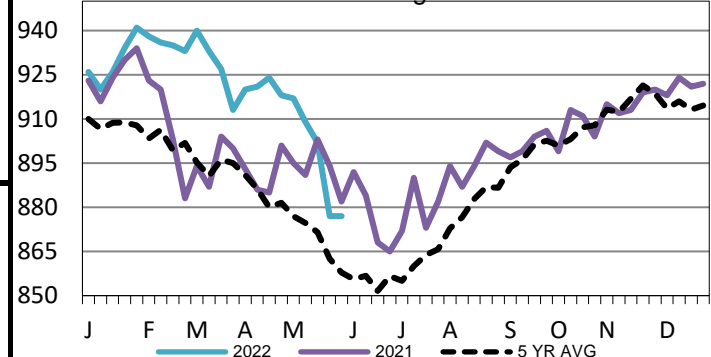
<a href="#">LM CT134</a>	<b>COLORADO</b>	<a href="#">LM CT109</a>
<b>Neg. Cash Volume:</b>	0	<b>Dressed Formula Vol:</b> 13,032
Live Steer Avg:	N/A	Steer/Heifer Avg: \$227.69
Live Heifer Avg:	N/A	<b>Dressed Neg. Grid Vol:</b> 100
Dressed Steer Avg:	N/A	Steer/Heifer Avg: \$231.81
Dressed Heifer Avg:	N/A	<b>TOTAL VOLUME:</b> 13,132
<a href="#">LM CT106</a>	<b>TOTAL WK TO DATE VOLUME:</b>	<b>23,826</b>
<b>Committed:</b>	<b>6,767</b>	<b>Delivered:</b> 10,705

<a href="#">LM CT137</a>	<b>IA-MN</b>	<a href="#">LM CT109</a>
<b>Neg. Cash Volume:</b>	3,000	<b>Dressed Formula Vol:</b> 2,315
Live Steer Avg:	\$141.80	Steer/Heifer Avg: \$232.87
Live Heifer Avg:	\$141.39	<b>Dressed Neg. Grid Vol:</b> 1,323
Dressed Steer Avg:	\$223.80	Steer/Heifer Avg: \$231.96
Dressed Heifer Avg:	\$224.00	<b>TOTAL VOLUME:</b> 6,638
<a href="#">LM CT106</a>	<b>TOTAL WK TO DATE VOLUME:</b>	<b>28,143</b>
<b>Committed:</b>	<b>7,699</b>	<b>Delivered:</b> 17,372

For Friday negotiated cash trading was limited on light demand in Kansas, Nebraska, and the Western Cornbelt. Not enough purchases for a market trend. Negotiated cash trading was at a standstill in the Texas Panhandle. Wednesday was the last reported market in any region. In the Southern Plains live purchases traded at 135.00. In Nebraska live and dressed purchases traded at 139.00 and 222.00, respectively. In the Western Cornbelt live and dressed purchases traded at 140.00 and 222.00, respectively.

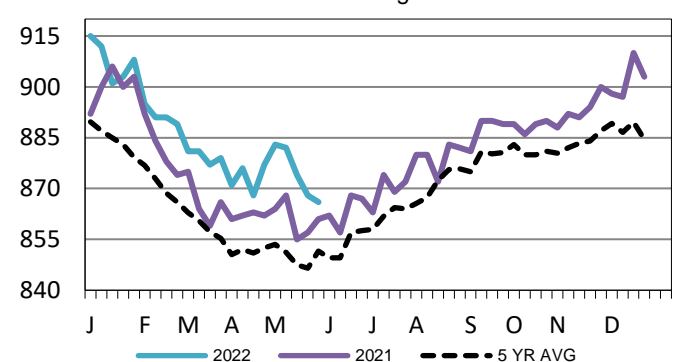
## Nebraska Formula Carcass Weights

WE 5-29-22 Weight = 877 lbs



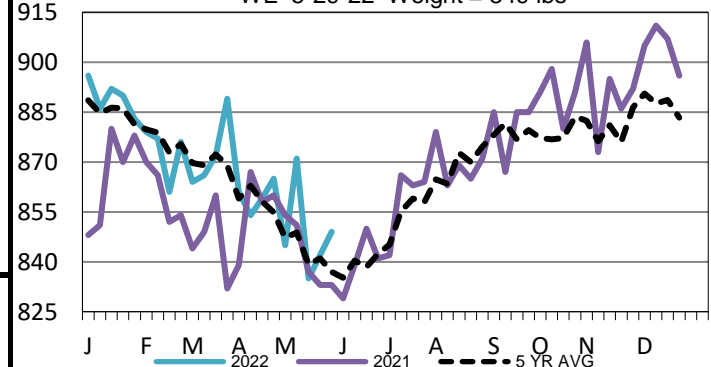
## Kansas Formula Carcass Weights

WE 5-29-22 Weight = 866 lbs



## Colorado Formula Carcass Weights

WE 5-29-22 Weight = 849 lbs



## USDA Livestock, Poultry and Grain Market News

St. Joseph, Missouri

Phone: 816-676-7000

[stjoe.lpgmn@ams.usda.gov](mailto:stjoe.lpgmn@ams.usda.gov)