

Daily Direct Steer and Heifer Slaughter Cattle Summary

For Trade on:

Thursday, May 26, 2022

LM CT100	5-AREA	LM CT109
Neg. Cash Volume:	11,335	Dressed Formula Vol: 44,669
Live Steer Avg:	\$141.01	Steer/Heifer Avg: \$224.83
Live Heifer Avg:	\$138.92	Dressed Neg. Grid Vol: 2,818
Dressed Steer Avg:	\$224.65	Steer/Heifer Avg: \$232.13
Dressed Heifer Avg:	\$223.11	TOTAL VOLUME: 58,822
LM CT106	TOTAL WK TO DATE VOLUME:	239,670
Committed:	60,469	Delivered: 64,701

LM CT118	TX-OK-NM	LM CT109
Neg. Cash Volume:	96	Dressed Formula Vol: 20,541
Live Steer Avg:	N/A	Steer/Heifer Avg: \$219.62
Live Heifer Avg:	N/A	Dressed Neg. Grid Vol: 0
Dressed Steer Avg:	N/A	Steer/Heifer Avg: N/A
Dressed Heifer Avg:	N/A	TOTAL VOLUME: 20,637
LM CT106	TOTAL WK TO DATE VOLUME:	73,897
Committed:	19,835	Delivered: 19,399

LM CT121	KANSAS	LM CT109
Neg. Cash Volume:	1,503	Dressed Formula Vol: 8,523
Live Steer Avg:	\$136.19	Steer/Heifer Avg: \$223.44
Live Heifer Avg:	\$136.00	Dressed Neg. Grid Vol: 677
Dressed Steer Avg:	N/A	Steer/Heifer Avg: \$224.83
Dressed Heifer Avg:	N/A	TOTAL VOLUME: 10,703
LM CT106	TOTAL WK TO DATE VOLUME:	66,476
Committed:	15,316	Delivered: 16,003

LM CT124	NEBRASKA	LM CT109
Neg. Cash Volume:	4,074	Dressed Formula Vol: 6,056
Live Steer Avg:	\$140.71	Steer/Heifer Avg: \$234.59
Live Heifer Avg:	N/A	Dressed Neg. Grid Vol: 1,141
Dressed Steer Avg:	\$224.52	Steer/Heifer Avg: \$234.83
Dressed Heifer Avg:	\$223.18	TOTAL VOLUME: 11,271
LM CT106	TOTAL WK TO DATE VOLUME:	55,651
Committed:	13,534	Delivered: 17,018

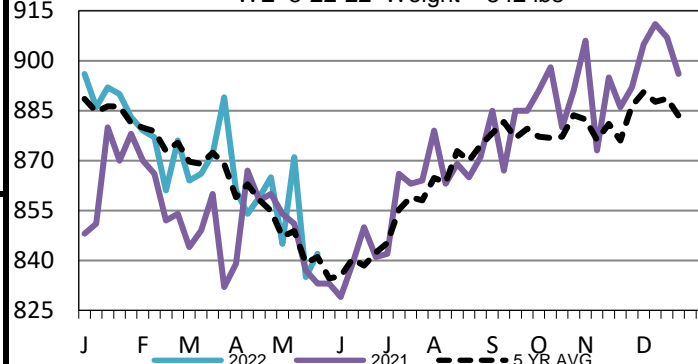
LM CT134	COLORADO	LM CT109
Neg. Cash Volume:	0	Dressed Formula Vol: 8,559
Live Steer Avg:	N/A	Steer/Heifer Avg: \$231.63
Live Heifer Avg:	N/A	Dressed Neg. Grid Vol: 0
Dressed Steer Avg:	N/A	Steer/Heifer Avg: N/A
Dressed Heifer Avg:	N/A	TOTAL VOLUME: 8,559
LM CT106	TOTAL WK TO DATE VOLUME:	20,544
Committed:	5,714	Delivered: 5,493

LM CT137	IA-MN	LM CT109
Neg. Cash Volume:	5,662	Dressed Formula Vol: 1,338
Live Steer Avg:	\$141.60	Steer/Heifer Avg: \$227.28
Live Heifer Avg:	\$140.25	Dressed Neg. Grid Vol: 1,069
Dressed Steer Avg:	\$225.17	Steer/Heifer Avg: \$234.09
Dressed Heifer Avg:	\$222.00	TOTAL VOLUME: 8,069
LM CT106	TOTAL WK TO DATE VOLUME:	23,806
Committed:	6,070	Delivered: 6,788

Thursday cash trading in Nebraska and Western Cornbelt was slow with moderate demand. In Nebraska a few dressed traded from 223.00-224.00. Wednesday was the last reported market with live at 140.00 and dressed at 223.00. In the Western Cornbelt live traded 1.00-2.00 higher from 141.00-142.00, when compared to Wednesday. Last week dressed traded from 223.00-227.00. On Thursday in Kansas cash trading was limited on light demand. For Thursday in the Texas Panhandle and Colorado cash trading was at a standstill. In the Southern Plains Tuesday was the last reported market with live at 137.00. Last week in Colorado live traded at 142.00.

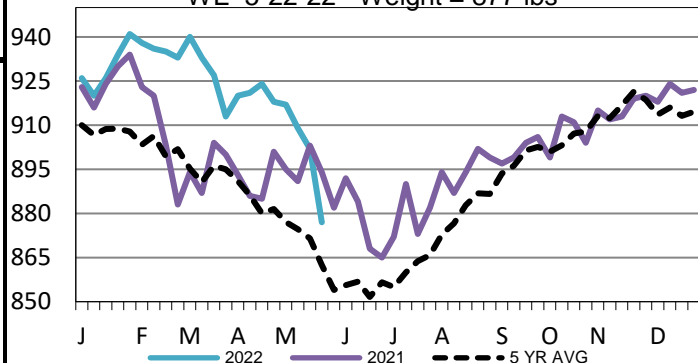
Colorado Formula Carcass Weights

WE 5-22-22 Weight = 842 lbs



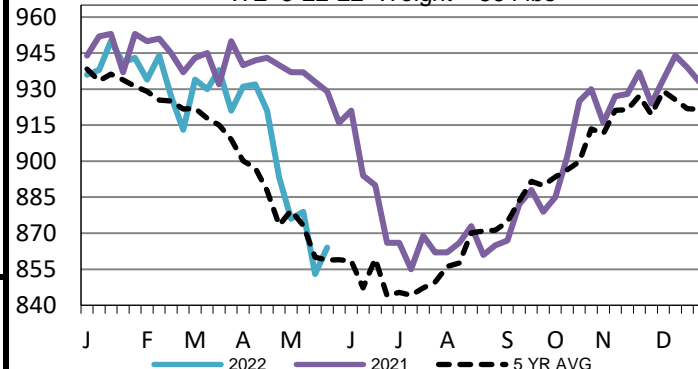
Nebraska Formula Carcass Weights

WE 5-22-22 Weight = 877 lbs



Iowa-Minnesota Formula Carcass Weights

WE 5-22-22 Weight = 864 lbs



USDA Livestock, Poultry and Grain Market News

St. Joseph, Missouri

Phone: 816-676-7000

stjoe.lpgmn@ams.usda.gov