

Daily Direct Steer and Heifer Slaughter Cattle Summary

For Trade on:

Wednesday, May 25, 2022

LM CT100	5-AREA	LM CT109
Neg. Cash Volume:	24,862	Dressed Formula Vol: 26,960
Live Steer Avg:	\$139.82	Steer/Heifer Avg: \$227.27
Live Heifer Avg:	\$138.93	Dressed Neg. Grid Vol: 1,626
Dressed Steer Avg:	\$223.47	Steer/Heifer Avg: \$232.54
Dressed Heifer Avg:	\$222.98	TOTAL VOLUME: 53,448
LM CT106	TOTAL WK TO DATE VOLUME:	180,848
Committed:	79,090	Delivered: 67,384

LM CT118	TX-OK-NM	LM CT109
Neg. Cash Volume:	105	Dressed Formula Vol: 10,372
Live Steer Avg:	N/A	Steer/Heifer Avg: \$225.29
Live Heifer Avg:	N/A	Dressed Neg. Grid Vol: 0
Dressed Steer Avg:	N/A	Steer/Heifer Avg: N/A
Dressed Heifer Avg:	N/A	TOTAL VOLUME: 10,477
LM CT106	TOTAL WK TO DATE VOLUME:	53,260
Committed:	10,903	Delivered: 22,977

LM CT121	KANSAS	LM CT109
Neg. Cash Volume:	1,959	Dressed Formula Vol: 9,134
Live Steer Avg:	\$136.86	Steer/Heifer Avg: \$225.04
Live Heifer Avg:	\$136.24	Dressed Neg. Grid Vol: 589
Dressed Steer Avg:	\$222.00	Steer/Heifer Avg: \$225.69
Dressed Heifer Avg:	\$223.00	TOTAL VOLUME: 11,682
LM CT106	TOTAL WK TO DATE VOLUME:	55,773
Committed:	22,747	Delivered: 16,013

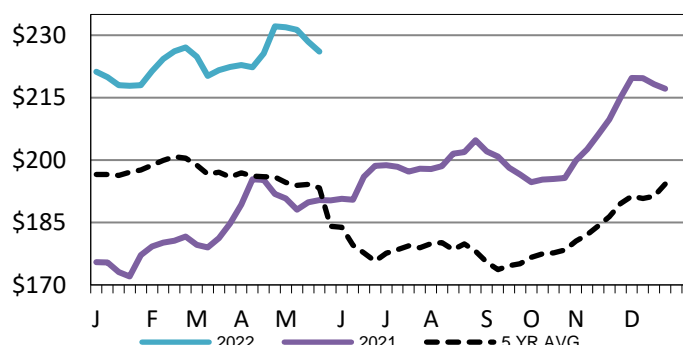
LM CT124	NEBRASKA	LM CT109
Neg. Cash Volume:	15,013	Dressed Formula Vol: 4,876
Live Steer Avg:	\$140.12	Steer/Heifer Avg: \$235.98
Live Heifer Avg:	\$139.42	Dressed Neg. Grid Vol: 431
Dressed Steer Avg:	\$223.38	Steer/Heifer Avg: \$235.13
Dressed Heifer Avg:	\$222.88	TOTAL VOLUME: 20,320
LM CT106	TOTAL WK TO DATE VOLUME:	44,380
Committed:	28,948	Delivered: 14,971

LM CT134	COLORADO	LM CT109
Neg. Cash Volume:	646	Dressed Formula Vol: 1,302
Live Steer Avg:	\$139.00	Steer/Heifer Avg: \$223.16
Live Heifer Avg:	\$138.68	Dressed Neg. Grid Vol: 0
Dressed Steer Avg:	N/A	Steer/Heifer Avg: N/A
Dressed Heifer Avg:	N/A	TOTAL VOLUME: 1,948
LM CT106	TOTAL WK TO DATE VOLUME:	11,985
Committed:	5,325	Delivered: 6,289

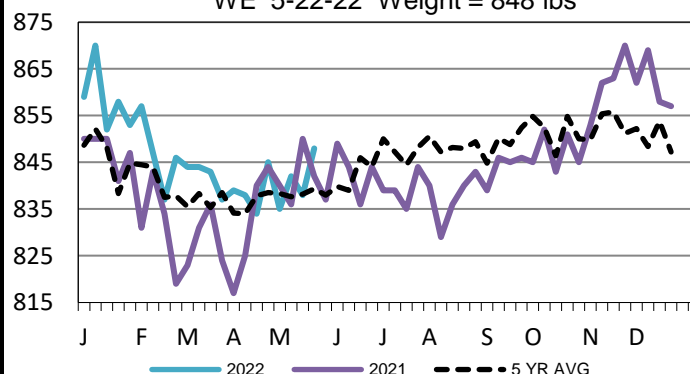
LM CT137	IA-MN	LM CT109
Neg. Cash Volume:	7,139	Dressed Formula Vol: 1,351
Live Steer Avg:	\$140.13	Steer/Heifer Avg: \$229.98
Live Heifer Avg:	\$140.15	Dressed Neg. Grid Vol: 629
Dressed Steer Avg:	\$224.04	Steer/Heifer Avg: \$237.28
Dressed Heifer Avg:	\$222.85	TOTAL VOLUME: 9,119
LM CT106	TOTAL WK TO DATE VOLUME:	15,737
Committed:	11,167	Delivered: 7,134

Wednesday in Nebraska cash trading and demand were moderate. Compared to last week live traded steady to 2.00 lower at 140.00 and dressed ranged from 222.00-225.00, mostly 3.00 lower at 223.00. Cash trading in the Western Cornbelt was slow on moderate demand. Compared to last week live traded mostly 2.00 lower at 140.00. Not enough dressed for a market trend. Last week dressed traded from 223.00-227.00. Wednesday in the Southern Plains and Colorado cash trading was limited on light demand. In the Southern Plains Tuesday was the last reported market with live at 137.00. Last week in Colorado live purchases traded at 142.00.

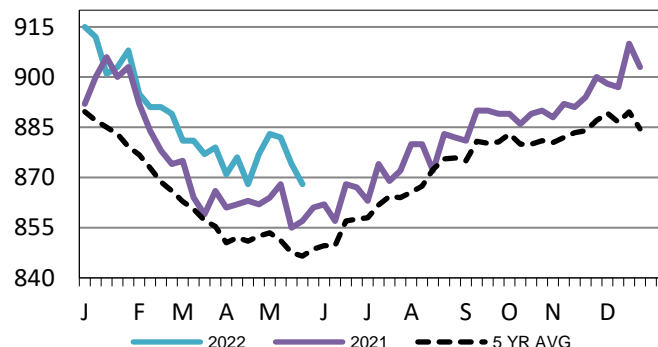
Iowa-Minnesota Wkly Dress Steer Wtd Avg
WE 5-22-22 Price = \$226.09



TX-OK-NM Formula Carcass Weights
WE 5-22-22 Weight = 848 lbs



Kansas Formula Carcass Weights
WE 5-22-22 Weight = 868 lbs



USDA Livestock, Poultry and Grain Market News

St. Joseph, Missouri

Phone: 816-676-7000

stjoe.lpgmn@ams.usda.gov