

Daily Direct Steer and Heifer Slaughter Cattle Summary

For Trade on:

Wednesday, May 18, 2022

LM CT100	5-AREA	LM CT109
Neg. Cash Volume:	18,939	Dressed Formula Vol: 30,013
Live Steer Avg:	\$142.57	Steer/Heifer Avg: \$233.21
Live Heifer Avg:	\$141.07	Dressed Neg. Grid Vol: 1,545
Dressed Steer Avg:	\$224.83	Steer/Heifer Avg: \$232.93
Dressed Heifer Avg:	\$225.01	TOTAL VOLUME: 50,497
LM CT106	TOTAL WK TO DATE VOLUME:	183,096
Committed:	68,468	Delivered: 74,300

LM CT118	TX-OK-NM	LM CT109
Neg. Cash Volume:	156	Dressed Formula Vol: 12,507
Live Steer Avg:	\$137.00	Steer/Heifer Avg: \$225.55
Live Heifer Avg:	N/A	Dressed Neg. Grid Vol: 0
Dressed Steer Avg:	N/A	Steer/Heifer Avg: N/A
Dressed Heifer Avg:	N/A	TOTAL VOLUME: 12,663
LM CT106	TOTAL WK TO DATE VOLUME:	50,517
Committed:	20,025	Delivered: 21,239

LM CT121	KANSAS	LM CT109
Neg. Cash Volume:	302	Dressed Formula Vol: 8,461
Live Steer Avg:	\$136.82	Steer/Heifer Avg: \$228.21
Live Heifer Avg:	\$136.00	Dressed Neg. Grid Vol: 216
Dressed Steer Avg:	\$224.00	Steer/Heifer Avg: \$226.81
Dressed Heifer Avg:	N/A	TOTAL VOLUME: 8,979
LM CT106	TOTAL WK TO DATE VOLUME:	54,939
Committed:	13,716	Delivered: 20,312

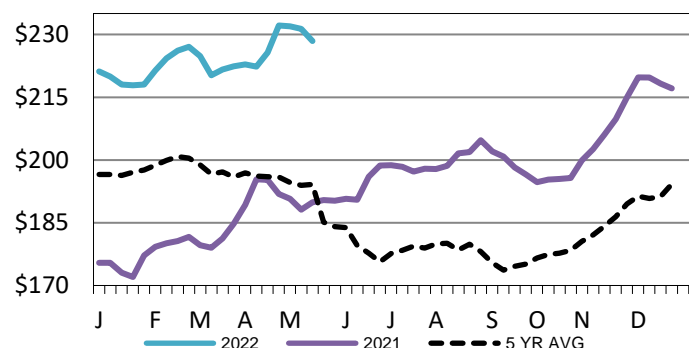
LM CT124	NEBRASKA	LM CT109
Neg. Cash Volume:	7,190	Dressed Formula Vol: 4,900
Live Steer Avg:	\$142.04	Steer/Heifer Avg: \$248.16
Live Heifer Avg:	\$140.00	Dressed Neg. Grid Vol: 416
Dressed Steer Avg:	\$224.60	Steer/Heifer Avg: \$232.90
Dressed Heifer Avg:	\$226.22	TOTAL VOLUME: 12,506
LM CT106	TOTAL WK TO DATE VOLUME:	38,648
Committed:	13,462	Delivered: 17,091

LM CT134	COLORADO	LM CT109
Neg. Cash Volume:	90	Dressed Formula Vol: 2,834
Live Steer Avg:	\$140.00	Steer/Heifer Avg: \$253.93
Live Heifer Avg:	N/A	Dressed Neg. Grid Vol: 90
Dressed Steer Avg:	N/A	Steer/Heifer Avg: \$232.86
Dressed Heifer Avg:	N/A	TOTAL VOLUME: 3,014
LM CT106	TOTAL WK TO DATE VOLUME:	7,841
Committed:	5,957	Delivered: 7,284

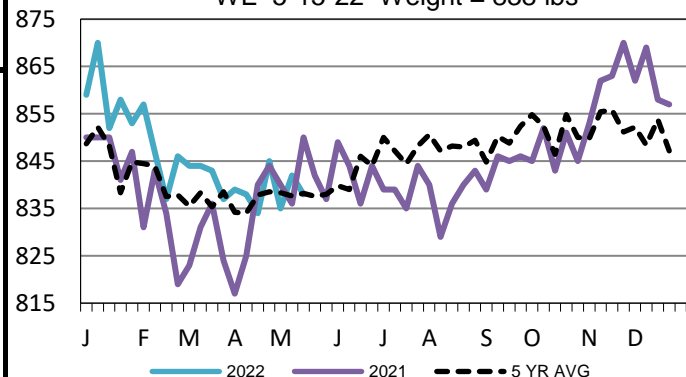
LM CT137	IA-MN	LM CT109
Neg. Cash Volume:	11,201	Dressed Formula Vol: 1,369
Live Steer Avg:	\$143.37	Steer/Heifer Avg: \$237.04
Live Heifer Avg:	\$141.97	Dressed Neg. Grid Vol: 823
Dressed Steer Avg:	\$225.25	Steer/Heifer Avg: \$234.56
Dressed Heifer Avg:	\$224.05	TOTAL VOLUME: 13,393
LM CT106	TOTAL WK TO DATE VOLUME:	31,420
Committed:	15,308	Delivered: 8,374

Wednesday cash trading was slow on light demand in Nebraska with live 2.00 lower at 140.00 compared to Tuesday. Not enough dressed for a market trend. The last reported dressed market in Nebraska was on Tuesday at 226.00. Cash trading was limited on light demand in the Western Cornbelt, and mostly inactive on very light demand in the Southern Plains and Colorado. Not enough trades for a market trend. On Tuesday in the Southern Plains live traded at 138.00. In the Western Cornbelt on Tuesday live traded at 142.00. The last reported dressed market was last week with from 227.00-230.00. In Colorado last week live traded from 140.00-144.00.

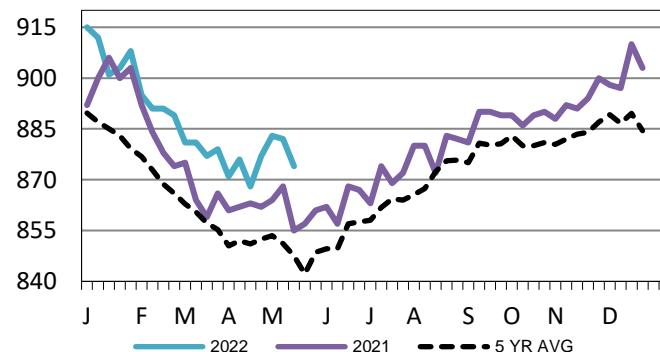
Iowa-Minnesota Wkly Dress Steer Wtd Avg
WE 5-15-22 Price = \$228.46



TX-OK-NM Formula Carcass Weights
WE 5-15-22 Weight = 838 lbs



Kansas Formula Carcass Weights
WE 5-15-22 Weight = 874 lbs



USDA Livestock, Poultry and Grain Market News

St. Joseph, Missouri

Phone: 816-676-7000

stjoe.lpgmn@ams.usda.gov