

Daily Direct Steer and Heifer Slaughter Cattle Summary

For Trade on:

Friday, May 13, 2022

LM CT100	5-AREA	LM CT109
Neg. Cash Volume:	5,607	Dressed Formula Vol: 44,331
Live Steer Avg:	\$143.25	Steer/Heifer Avg: \$227.82
Live Heifer Avg:	\$142.00	Dressed Neg. Grid Vol: 1,447
Dressed Steer Avg:	\$227.15	Steer/Heifer Avg: \$232.02
Dressed Heifer Avg:	\$227.00	TOTAL VOLUME: 51,385
LM CT106	TOTAL WK TO DATE VOLUME:	285,598
Committed:	64,008	Delivered: 91,624

LM CT118	TX-OK-NM	LM CT109
Neg. Cash Volume:	0	Dressed Formula Vol: 15,081
Live Steer Avg:	N/A	Steer/Heifer Avg: \$222.83
Live Heifer Avg:	N/A	Dressed Neg. Grid Vol: 0
Dressed Steer Avg:	N/A	Steer/Heifer Avg: N/A
Dressed Heifer Avg:	N/A	TOTAL VOLUME: 15,081
LM CT106	TOTAL WK TO DATE VOLUME:	78,771
Committed:	28,709	Delivered: 24,107

LM CT121	KANSAS	LM CT109
Neg. Cash Volume:	0	Dressed Formula Vol: 14,119
Live Steer Avg:	N/A	Steer/Heifer Avg: \$224.47
Live Heifer Avg:	N/A	Dressed Neg. Grid Vol: 300
Dressed Steer Avg:	N/A	Steer/Heifer Avg: \$230.92
Dressed Heifer Avg:	N/A	TOTAL VOLUME: 14,419
LM CT106	TOTAL WK TO DATE VOLUME:	74,154
Committed:	14,565	Delivered: 30,487

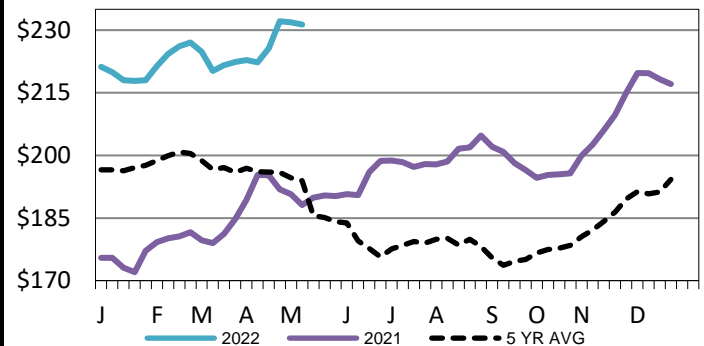
LM CT124	NEBRASKA	LM CT109
Neg. Cash Volume:	1,977	Dressed Formula Vol: 7,437
Live Steer Avg:	N/A	Steer/Heifer Avg: \$238.21
Live Heifer Avg:	N/A	Dressed Neg. Grid Vol: 402
Dressed Steer Avg:	\$227.00	Steer/Heifer Avg: \$230.27
Dressed Heifer Avg:	\$227.00	TOTAL VOLUME: 9,816
LM CT106	TOTAL WK TO DATE VOLUME:	81,250
Committed:	10,379	Delivered: 18,892

LM CT134	COLORADO	LM CT109
Neg. Cash Volume:	0	Dressed Formula Vol: 6,556
Live Steer Avg:	N/A	Steer/Heifer Avg: \$232.96
Live Heifer Avg:	N/A	Dressed Neg. Grid Vol: 0
Dressed Steer Avg:	N/A	Steer/Heifer Avg: N/A
Dressed Heifer Avg:	N/A	TOTAL VOLUME: 6,556
LM CT106	TOTAL WK TO DATE VOLUME:	23,009
Committed:	2,321	Delivered: 4,404

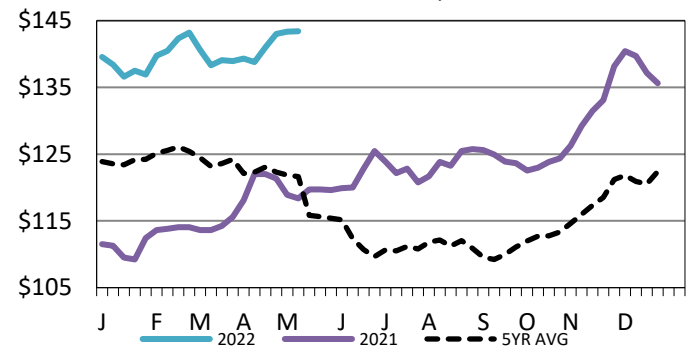
LM CT137	IA-MN	LM CT109
Neg. Cash Volume:	3630	Dressed Formula Vol: 1,288
Live Steer Avg:	\$143.25	Steer/Heifer Avg: \$238.19
Live Heifer Avg:	\$142.00	Dressed Neg. Grid Vol: 745
Dressed Steer Avg:	\$227.38	Steer/Heifer Avg: \$233.42
Dressed Heifer Avg:	N/A	TOTAL VOLUME: 5,663
LM CT106	TOTAL WK TO DATE VOLUME:	29,612
Committed:	8,034	Delivered: 13,734

Friday in Nebraska and Western Cornbelt cash trading was light with light demand. In the Southern Plains and Colorado cash trading was at a standstill. Not enough purchases for a market trend in any region. Wednesday was the last reported market in the Texas Panhandle, Nebraska and Western Cornbelt. In the Texas Panhandle with live at 140.00. In Nebraska live and dressed raded at 144.00 and 230.00, respectively. In the Western Cornbelt live and dressed traded from 144.00-145.00 and 227.00-230.00, respectively. Tuesday was the last reported market in Kansas with live at 140.00. Last week in Colorado live traded from 142.00-148.00.

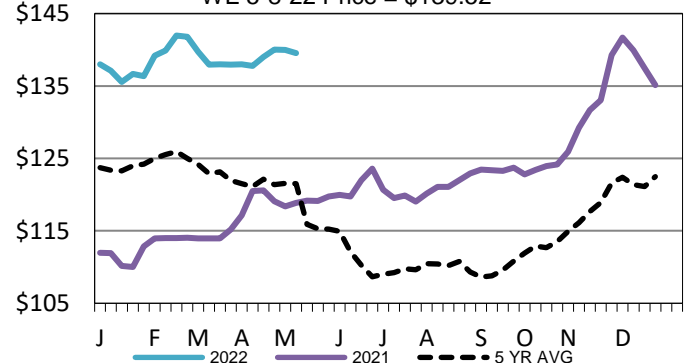
Iowa-Minnesota Wkly Dress Steer Wtd Avg
WE 5-8-22 Price = \$231.31



5-Area Live Steer Weighted Average
WE 5-8-22 Price = \$143.42



Kansas Weekly Live Steer Weighted Average
WE 5-8-22 Price = \$139.52



USDA Livestock, Poultry and Grain Market News

St. Joseph, Missouri

Phone: 816-676-7000

stjoe.lpgmn@ams.usda.gov