

Daily Direct Steer and Heifer Slaughter Cattle Summary

For Trade on:

Thursday, May 12, 2022

LM CT100	5-AREA	LM CT109
Neg. Cash Volume:	9,663	Dressed Formula Vol: 37,568
Live Steer Avg:	\$144.05	Steer/Heifer Avg: \$231.43
Live Heifer Avg:	\$141.62	Dressed Neg. Grid Vol: 3,772
Dressed Steer Avg:	\$227.97	Steer/Heifer Avg: \$229.07
Dressed Heifer Avg:	\$227.00	TOTAL VOLUME: 51,003
LM CT106	TOTAL WK TO DATE VOLUME:	234,213
Committed:	60,246	Delivered: 70,123

LM CT118	TX-OK-NM	LM CT109
Neg. Cash Volume:	0	Dressed Formula Vol: 7,690
Live Steer Avg:	N/A	Steer/Heifer Avg: \$220.70
Live Heifer Avg:	N/A	Dressed Neg. Grid Vol: 0
Dressed Steer Avg:	N/A	Steer/Heifer Avg: N/A
Dressed Heifer Avg:	N/A	TOTAL VOLUME: 7,690
LM CT106	TOTAL WK TO DATE VOLUME:	63,690
Committed:	16,921	Delivered: 18,738

LM CT121	KANSAS	LM CT109
Neg. Cash Volume:	142	Dressed Formula Vol: 10,717
Live Steer Avg:	\$138.00	Steer/Heifer Avg: \$225.35
Live Heifer Avg:	N/A	Dressed Neg. Grid Vol: 2,033
Dressed Steer Avg:	N/A	Steer/Heifer Avg: \$226.55
Dressed Heifer Avg:	N/A	TOTAL VOLUME: 12,892
LM CT106	TOTAL WK TO DATE VOLUME:	59,735
Committed:	14,362	Delivered: 21,725

LM CT124	NEBRASKA	LM CT109
Neg. Cash Volume:	4,303	Dressed Formula Vol: 13,276
Live Steer Avg:	\$145.44	Steer/Heifer Avg: \$239.08
Live Heifer Avg:	\$145.00	Dressed Neg. Grid Vol: 1,248
Dressed Steer Avg:	\$227.55	Steer/Heifer Avg: \$232.79
Dressed Heifer Avg:	\$227.00	TOTAL VOLUME: 18,827
LM CT106	TOTAL WK TO DATE VOLUME:	71,434
Committed:	12,434	Delivered: 15,267

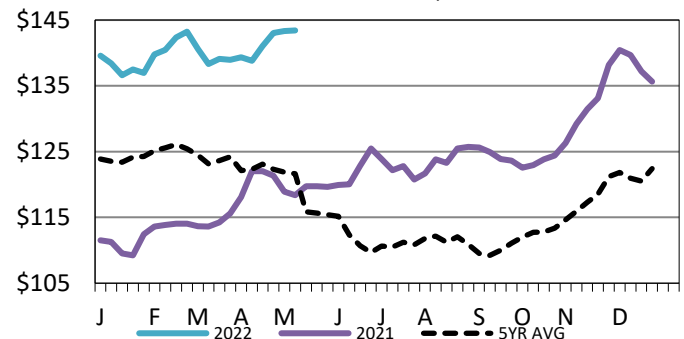
LM CT134	COLORADO	LM CT109
Neg. Cash Volume:	0	Dressed Formula Vol: 4,322
Live Steer Avg:	N/A	Steer/Heifer Avg: \$240.89
Live Heifer Avg:	N/A	Dressed Neg. Grid Vol: 177
Dressed Steer Avg:	N/A	Steer/Heifer Avg: \$223.89
Dressed Heifer Avg:	N/A	TOTAL VOLUME: 4,499
LM CT106	TOTAL WK TO DATE VOLUME:	16,453
Committed:	8,751	Delivered: 5,781

LM CT137	IA-MN	LM CT109
Neg. Cash Volume:	5218	Dressed Formula Vol: 1,883
Live Steer Avg:	\$143.47	Steer/Heifer Avg: \$234.76
Live Heifer Avg:	\$140.70	Dressed Neg. Grid Vol: 314
Dressed Steer Avg:	\$228.73	Steer/Heifer Avg: \$233.49
Dressed Heifer Avg:	N/A	TOTAL VOLUME: 7,415
LM CT106	TOTAL WK TO DATE VOLUME:	23,949
Committed:	7,778	Delivered: 8,612

Thursday in Nebraska and Western Cornbelt cash trading was slow with light to moderate demand. In the Southern Plains and Colorado cash trading was mostly inactive on very light demand. Not enough purchases for a market trend in any region. Wednesday was the last reported market in Texas, Nebraska and Western Cornbelt. In the Texas Panhandle with live at 140.00. In Nebraska live and dressed traded at 144.00 and 230.00, respectively. In the Western Cornbelt live and dressed traded from 144.00-145.00 and 227.00-230.00, respectively. Tuesday was the last reported market in Kansas with live at 140.00. Last week in Colorado live traded from 142.00-148.00.

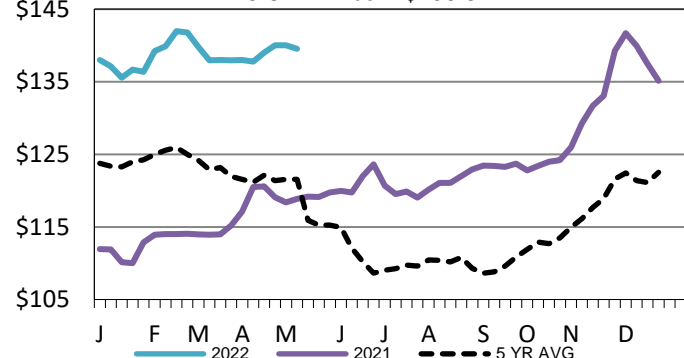
5-Area Live Steer Weighted Average

WE 5-8-22 Price = \$143.42



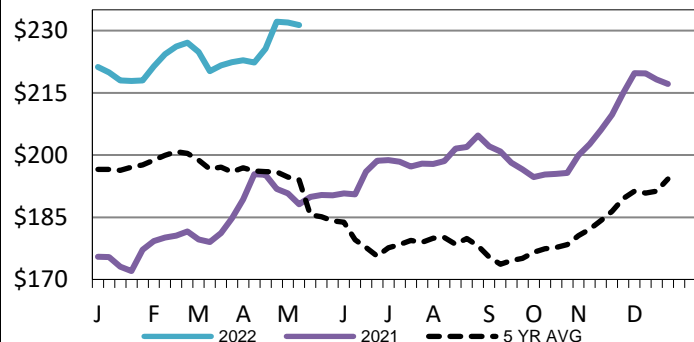
Kansas Weekly Live Steer Weighted Average

WE 5-8-22 Price = \$139.52



Iowa-Minnesota Wkly Dress Steer Wtd Avg

WE 5-8-22 Price = \$231.31



USDA Livestock, Poultry and Grain Market News

St. Joseph, Missouri

Phone: 816-676-7000

stjoe.lpgmn@ams.usda.gov