

## Daily Direct Steer and Heifer Slaughter Cattle Summary

For Trade on:

Tuesday, May 10, 2022

<a href="#">LM CT100</a>	<b>5-AREA</b>	<a href="#">LM CT109</a>
<b>Neg. Cash Volume:</b>	46,526	<b>Dressed Formula Vol:</b> 35,237
Live Steer Avg:	\$141.43	Steer/Heifer Avg: \$230.13
Live Heifer Avg:	\$141.20	<b>Dressed Neg. Grid Vol:</b> 1,557
Dressed Steer Avg:	\$229.53	Steer/Heifer Avg: \$231.23
Dressed Heifer Avg:	\$229.67	<b>TOTAL VOLUME:</b> 83,320
<a href="#">LM CT106</a>	<b>TOTAL WK TO DATE VOLUME:</b>	<b>137,746</b>
<b>Committed:</b>	<b>102,810</b>	<b>Delivered:</b> 70,893

<a href="#">LM CT118</a>	<b>TX-OK-NM</b>	<a href="#">LM CT109</a>
<b>Neg. Cash Volume:</b>	6,753	<b>Dressed Formula Vol:</b> 10,316
Live Steer Avg:	\$139.88	Steer/Heifer Avg: \$223.87
Live Heifer Avg:	\$139.66	<b>Dressed Neg. Grid Vol:</b> 107
Dressed Steer Avg:	N/A	Steer/Heifer Avg: \$221.24
Dressed Heifer Avg:	N/A	<b>TOTAL VOLUME:</b> 17,176
<a href="#">LM CT106</a>	<b>TOTAL WK TO DATE VOLUME:</b>	<b>40,956</b>
<b>Committed:</b>	<b>30,572</b>	<b>Delivered:</b> 20,929

<a href="#">LM CT121</a>	<b>KANSAS</b>	<a href="#">LM CT109</a>
<b>Neg. Cash Volume:</b>	13,403	<b>Dressed Formula Vol:</b> 13,427
Live Steer Avg:	\$140.00	Steer/Heifer Avg: \$226.35
Live Heifer Avg:	\$139.98	<b>Dressed Neg. Grid Vol:</b> 341
Dressed Steer Avg:	\$222.00	Steer/Heifer Avg: \$231.44
Dressed Heifer Avg:	\$230.00	<b>TOTAL VOLUME:</b> 27,171
<a href="#">LM CT106</a>	<b>TOTAL WK TO DATE VOLUME:</b>	<b>39,836</b>
<b>Committed:</b>	<b>41,068</b>	<b>Delivered:</b> 16,769

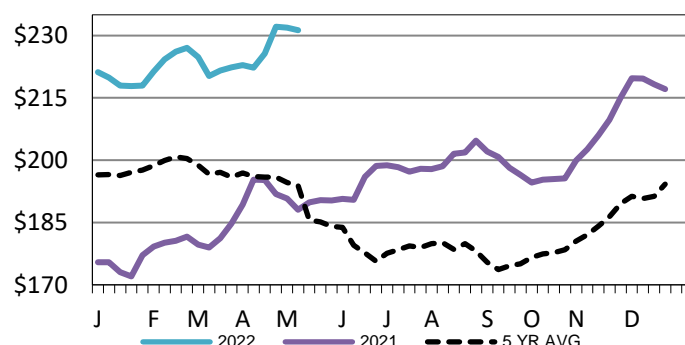
<a href="#">LM CT124</a>	<b>NEBRASKA</b>	<a href="#">LM CT109</a>
<b>Neg. Cash Volume:</b>	21,547	<b>Dressed Formula Vol:</b> 6,512
Live Steer Avg:	\$144.56	Steer/Heifer Avg: \$241.09
Live Heifer Avg:	\$143.95	<b>Dressed Neg. Grid Vol:</b> 927
Dressed Steer Avg:	\$229.70	Steer/Heifer Avg: \$233.61
Dressed Heifer Avg:	\$229.60	<b>TOTAL VOLUME:</b> 28,986
<a href="#">LM CT106</a>	<b>TOTAL WK TO DATE VOLUME:</b>	<b>39,068</b>
<b>Committed:</b>	<b>20,929</b>	<b>Delivered:</b> 19,089

<a href="#">LM CT134</a>	<b>COLORADO</b>	<a href="#">LM CT109</a>
<b>Neg. Cash Volume:</b>	401	<b>Dressed Formula Vol:</b> 3,322
Live Steer Avg:	\$144.00	Steer/Heifer Avg: \$241.91
Live Heifer Avg:	\$144.00	<b>Dressed Neg. Grid Vol:</b> 80
Dressed Steer Avg:	N/A	Steer/Heifer Avg: \$234.74
Dressed Heifer Avg:	N/A	<b>TOTAL VOLUME:</b> 3,803
<a href="#">LM CT106</a>	<b>TOTAL WK TO DATE VOLUME:</b>	<b>10,422</b>
<b>Committed:</b>	<b>3,838</b>	<b>Delivered:</b> 5,854

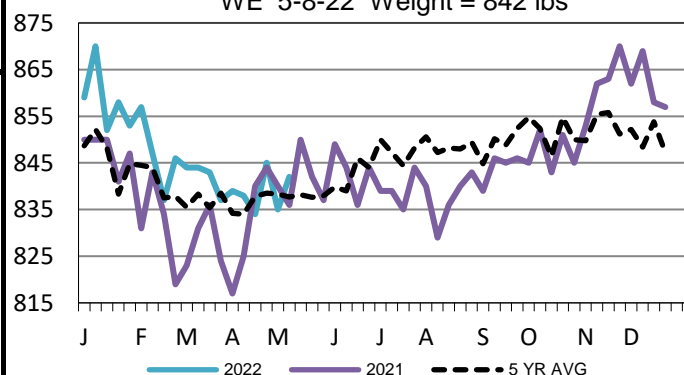
<a href="#">LM CT137</a>	<b>IA-MN</b>	<a href="#">LM CT109</a>
<b>Neg. Cash Volume:</b>	4422	<b>Dressed Formula Vol:</b> 1,699
Live Steer Avg:	\$144.70	Steer/Heifer Avg: \$233.19
Live Heifer Avg:	\$144.00	<b>Dressed Neg. Grid Vol:</b> 102
Dressed Steer Avg:	\$229.43	Steer/Heifer Avg: \$216.63
Dressed Heifer Avg:	\$230.00	<b>TOTAL VOLUME:</b> 6,223
<a href="#">LM CT106</a>	<b>TOTAL WK TO DATE VOLUME:</b>	<b>7,996</b>
<b>Committed:</b>	<b>6,403</b>	<b>Delivered:</b> 8,252

Tuesday in the Southern Plains and Nebraska cash trading and demand were moderate. In Texas live ranged from 139.00-140.00, mostly steady at 140.00 when compared to last week. In Kansas compared to the prior week live traded steady at 140.00. In the Nebraska compared to last week both live and dressed traded mostly 2.00 lower at 144.00 and 230.00, respectively. In Colorado and Western Cornbelt cash trading was limited on light demand. Not enough purchases in either region for a market trend. Last week in Colorado live traded from 142.00-148.00. In the Western Cornbelt week live and dressed traded from 144.00-147.00 and from 230.00-232.00, respectively.

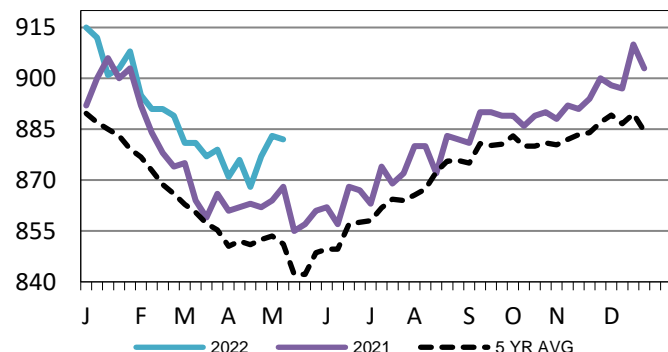
**Iowa-Minnesota Wkly Dress Steer Wtd Avg**  
WE 5-8-22 Price = \$231.31



**TX-OK-NM Formula Carcass Weights**  
WE 5-8-22 Weight = 842 lbs



**Kansas Formula Carcass Weights**  
WE 5-8-22 Weight = 882 lbs



## USDA Livestock, Poultry and Grain Market News

St. Joseph, Missouri

Phone: 816-676-7000

[stjoe.lpgmn@ams.usda.gov](mailto:stjoe.lpgmn@ams.usda.gov)