

Daily Direct Steer and Heifer Slaughter Cattle Summary

For Trade on:

Wednesday, May 04, 2022

LM CT100	5-AREA	LM CT109
Neg. Cash Volume:	69,215	Dressed Formula Vol: 30,015
Live Steer Avg:	\$143.34	Steer/Heifer Avg: \$230.96
Live Heifer Avg:	\$143.15	Dressed Neg. Grid Vol: 3,558
Dressed Steer Avg:	\$231.56	Steer/Heifer Avg: \$226.46
Dressed Heifer Avg:	\$231.97	TOTAL VOLUME: 102,788
LM CT106	TOTAL WK TO DATE VOLUME:	200,923
Committed:	132,620	Delivered: 68,478

LM CT118	TX-OK-NM	LM CT109
Neg. Cash Volume:	10,240	Dressed Formula Vol: 13,899
Live Steer Avg:	\$140.04	Steer/Heifer Avg: \$226.05
Live Heifer Avg:	\$140.00	Dressed Neg. Grid Vol: 0
Dressed Steer Avg:	N/A	Steer/Heifer Avg: N/A
Dressed Heifer Avg:	N/A	TOTAL VOLUME: 24,139
LM CT106	TOTAL WK TO DATE VOLUME:	59,414
Committed:	24,182	Delivered: 19,704

LM CT121	KANSAS	LM CT109
Neg. Cash Volume:	13,408	Dressed Formula Vol: 7,148
Live Steer Avg:	\$140.06	Steer/Heifer Avg: \$227.65
Live Heifer Avg:	\$140.00	Dressed Neg. Grid Vol: 1,470
Dressed Steer Avg:	\$231.21	Steer/Heifer Avg: \$221.70
Dressed Heifer Avg:	\$232.00	TOTAL VOLUME: 22,026
LM CT106	TOTAL WK TO DATE VOLUME:	48,883
Committed:	40,199	Delivered: 18,881

LM CT124	NEBRASKA	LM CT109
Neg. Cash Volume:	27,822	Dressed Formula Vol: 4,161
Live Steer Avg:	\$146.23	Steer/Heifer Avg: \$240.16
Live Heifer Avg:	\$146.37	Dressed Neg. Grid Vol: 1,365
Dressed Steer Avg:	\$231.68	Steer/Heifer Avg: \$229.19
Dressed Heifer Avg:	\$231.88	TOTAL VOLUME: 33,348
LM CT106	TOTAL WK TO DATE VOLUME:	50,778
Committed:	38,243	Delivered: 17,326

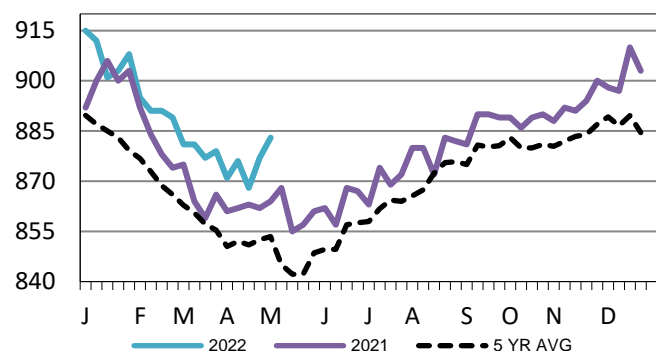
LM CT134	COLORADO	LM CT109
Neg. Cash Volume:	932	Dressed Formula Vol: 3,469
Live Steer Avg:	\$146.00	Steer/Heifer Avg: \$245.43
Live Heifer Avg:	\$146.00	Dressed Neg. Grid Vol: 39
Dressed Steer Avg:	N/A	Steer/Heifer Avg: \$233.14
Dressed Heifer Avg:	N/A	TOTAL VOLUME: 4,440
LM CT106	TOTAL WK TO DATE VOLUME:	15,235
Committed:	6,960	Delivered: 4,591

LM CT137	IA-MN	LM CT109
Neg. Cash Volume:	16,813	Dressed Formula Vol: 1,409
Live Steer Avg:	\$145.97	Steer/Heifer Avg: \$233.95
Live Heifer Avg:	\$146.20	Dressed Neg. Grid Vol: 684
Dressed Steer Avg:	\$231.24	Steer/Heifer Avg: \$230.83
Dressed Heifer Avg:	\$232.16	TOTAL VOLUME: 18,906
LM CT106	TOTAL WK TO DATE VOLUME:	27,017
Committed:	23,036	Delivered: 7,976

Wednesday in the Southern Plains, Nebraska and Western Cornbelt cash trading was moderate on good demand. In the Southern Plains, compared to last week, live traded steady at 140.00. In Nebraska, compared to last week, both live and dressed traded steady at 146.00 and 232.00, respectively, with a few live up to 150.00. In the Western Cornbelt, compared to last week, live traded unevenly steady mostly at 146.00, with a few up to 148.50, and dressed traded steady to 2.00 lower from 230.00-232.00. In Colorado cash trading was slow with light demand. Thus far for the week live have traded 1.00-4.00 lower from 142.00-146.00.

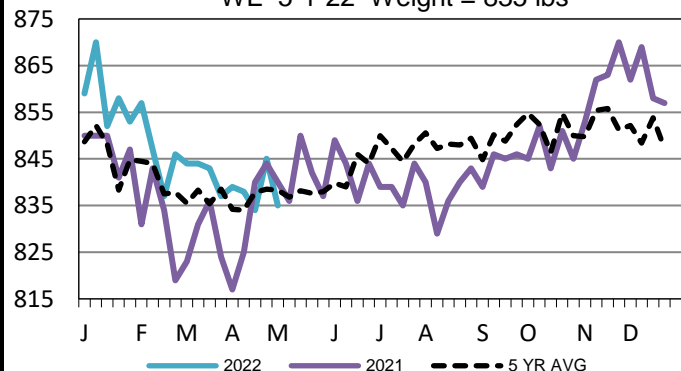
Kansas Formula Carcass Weights

WE 5-1-22 Weight = 883 lbs



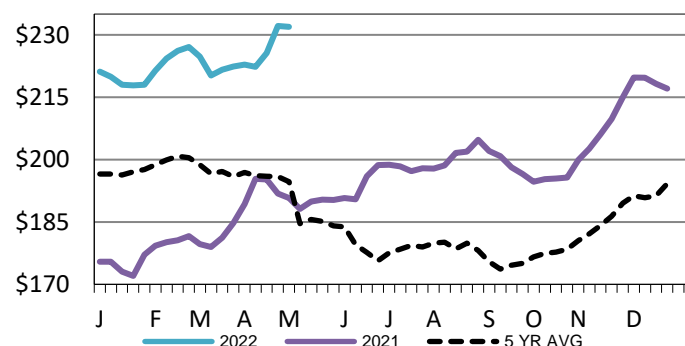
TX-OK-NM Formula Carcass Weights

WE 5-1-22 Weight = 835 lbs



Iowa-Minnesota Wkly Dress Steer Wtd Avg

WE 5-1-22 Price = \$231.91



USDA Livestock, Poultry and Grain Market News

St. Joseph, Missouri

Phone: 816-676-7000

stjoe.lpgmn@ams.usda.gov