

Daily Direct Steer and Heifer Slaughter Cattle Summary

For Trade on:

Tuesday, April 26, 2022

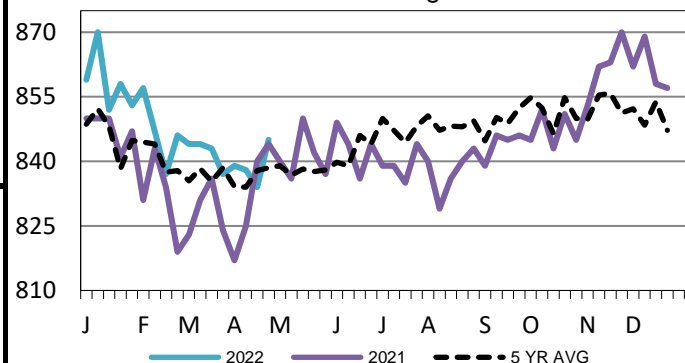
LM CT100	5-AREA	LM CT109
Neg. Cash Volume:	64,886	Dressed Formula Vol: 31,425
Live Steer Avg:	\$143.82	Steer/Heifer Avg: \$227.90
Live Heifer Avg:	\$143.34	Dressed Neg. Grid Vol: 1,934
Dressed Steer Avg:	\$232.43	Steer/Heifer Avg: \$224.81
Dressed Heifer Avg:	\$232.63	TOTAL VOLUME: 98,245
LM CT106	TOTAL WK TO DATE VOLUME:	198,919
Committed:	114,030	Delivered: 75,004

Tuesday in Kansas cash trading was moderate on good demand. In Texas cash trading moderate on light demand. Compared to Monday live traded steady at 140.00. In Nebraska and Western Cornbelt cash trading was moderate on good demand. In Nebraska compared to last week live traded steady from 144.00-146.00, dressed traded unevenly steady mostly at 232.00. In Western Cornbelt compared to last week live traded steady to 1.00 higher from 145.00-147.00, dressed traded unevenly steady mostly at 232.00. In Colorado cash trading was moderate on light demand. Compared to last week live purchases traded steady to 1.00 higher from 144.00-146.00.

LM CT118	TX-OK-NM	LM CT109
Neg. Cash Volume:	5,047	Dressed Formula Vol: 12,586
Live Steer Avg:	\$140.00	Steer/Heifer Avg: \$222.00
Live Heifer Avg:	\$140.00	Dressed Neg. Grid Vol: 0
Dressed Steer Avg:	N/A	Steer/Heifer Avg: N/A
Dressed Heifer Avg:	N/A	TOTAL VOLUME: 17,633
LM CT106	TOTAL WK TO DATE VOLUME:	57,787
Committed:	26,440	Delivered: 21,375

TX-OK-NM Formula Carcass Weights

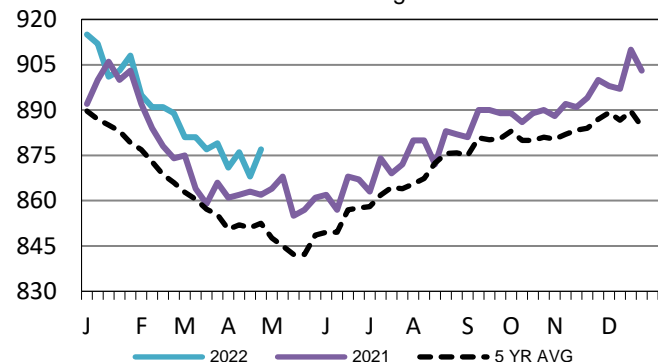
WE 4-24-22 Weight = 845 lbs



LM CT121	KANSAS	LM CT109
Neg. Cash Volume:	11,781	Dressed Formula Vol: 8,724
Live Steer Avg:	\$139.92	Steer/Heifer Avg: \$225.92
Live Heifer Avg:	\$140.00	Dressed Neg. Grid Vol: 675
Dressed Steer Avg:	\$231.37	Steer/Heifer Avg: \$222.67
Dressed Heifer Avg:	N/A	TOTAL VOLUME: 21,180
LM CT106	TOTAL WK TO DATE VOLUME:	55,949
Committed:	25,754	Delivered: 19,413

Kansas Formula Carcass Weights

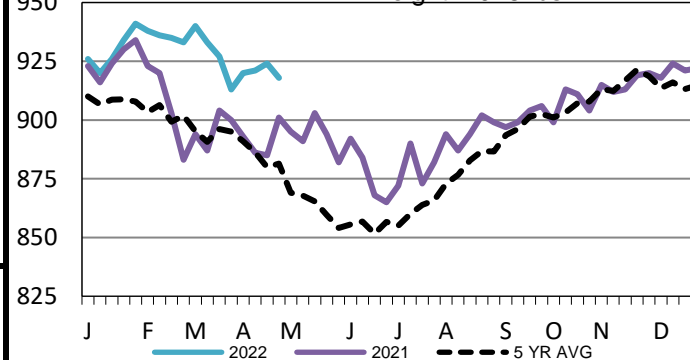
WE 4-24-22 Weight = 877 lbs



LM CT124	NEBRASKA	LM CT109
Neg. Cash Volume:	22,470	Dressed Formula Vol: 5,633
Live Steer Avg:	\$145.45	Steer/Heifer Avg: \$233.72
Live Heifer Avg:	\$145.67	Dressed Neg. Grid Vol: 538
Dressed Steer Avg:	\$232.69	Steer/Heifer Avg: \$225.96
Dressed Heifer Avg:	\$233.26	TOTAL VOLUME: 28,641
LM CT106	TOTAL WK TO DATE VOLUME:	40,478
Committed:	30,042	Delivered: 17,226

Nebraska Formula Carcass Weights

WE 4-24-22 Weight = 918 lbs



LM CT134	COLORADO	LM CT109
Neg. Cash Volume:	1,317	Dressed Formula Vol: 3,100
Live Steer Avg:	\$146.00	Steer/Heifer Avg: \$245.23
Live Heifer Avg:	\$145.23	Dressed Neg. Grid Vol: 42
Dressed Steer Avg:	N/A	Steer/Heifer Avg: \$224.00
Dressed Heifer Avg:	N/A	TOTAL VOLUME: 4,459
LM CT106	TOTAL WK TO DATE VOLUME:	13,722
Committed:	3,493	Delivered: 7,378

LM CT137	IA-MN	LM CT109
Neg. Cash Volume:	24,251	Dressed Formula Vol: 1,464
Live Steer Avg:	\$146.26	Steer/Heifer Avg: \$231.40
Live Heifer Avg:	\$145.76	Dressed Neg. Grid Vol: 679
Dressed Steer Avg:	\$232.29	Steer/Heifer Avg: \$226.07
Dressed Heifer Avg:	\$231.84	TOTAL VOLUME: 26,394
LM CT106	TOTAL WK TO DATE VOLUME:	31,218
Committed:	28,301	Delivered: 9,612

USDA Livestock, Poultry and Grain Market News

St. Joseph, Missouri

Phone: 816-676-7000

stjoe.lpgmn@ams.usda.gov