

Daily Direct Steer and Heifer Slaughter Cattle Summary

For Trade on:

Thursday, April 14, 2022

LM CT100	5-AREA	LM CT109
Neg. Cash Volume:	2,807	Dressed Formula Vol: 43,783
Live Steer Avg:	\$143.28	Steer/Heifer Avg: \$224.12
Live Heifer Avg:	\$137.95	Dressed Neg. Grid Vol: 2,861
Dressed Steer Avg:	\$226.34	Steer/Heifer Avg: \$223.77
Dressed Heifer Avg:	\$126.00	TOTAL VOLUME: 49,451
LM CT106	TOTAL WK TO DATE VOLUME:	246,087
Committed:	63,232	Delivered: 67,026

LM CT118	TX-OK-NM	LM CT109
Neg. Cash Volume:	123	Dressed Formula Vol: 15,161
Live Steer Avg:	N/A	Steer/Heifer Avg: \$218.66
Live Heifer Avg:	\$137.95	Dressed Neg. Grid Vol: 0
Dressed Steer Avg:	N/A	Steer/Heifer Avg: N/A
Dressed Heifer Avg:	N/A	TOTAL VOLUME: 15,284
LM CT106	TOTAL WK TO DATE VOLUME:	63,579
Committed:	21,787	Delivered: 20,554

LM CT121	KANSAS	LM CT109
Neg. Cash Volume:	0	Dressed Formula Vol: 10,304
Live Steer Avg:	N/A	Steer/Heifer Avg: \$220.42
Live Heifer Avg:	N/A	Dressed Neg. Grid Vol: 899
Dressed Steer Avg:	N/A	Steer/Heifer Avg: \$218.43
Dressed Heifer Avg:	N/A	TOTAL VOLUME: 11,203
LM CT106	TOTAL WK TO DATE VOLUME:	67,680
Committed:	14,759	Delivered: 19,821

LM CT124	NEBRASKA	LM CT109
Neg. Cash Volume:	820	Dressed Formula Vol: 12,829
Live Steer Avg:	\$142.50	Steer/Heifer Avg: \$229.94
Live Heifer Avg:	N/A	Dressed Neg. Grid Vol: 766
Dressed Steer Avg:	\$226.00	Steer/Heifer Avg: \$225.02
Dressed Heifer Avg:	\$226.00	TOTAL VOLUME: 14,415
LM CT106	TOTAL WK TO DATE VOLUME:	61,610
Committed:	21,713	Delivered: 11,870

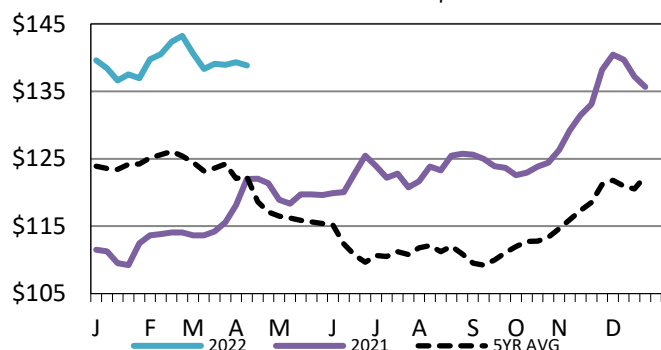
LM CT134	COLORADO	LM CT109
Neg. Cash Volume:	0	Dressed Formula Vol: 3,849
Live Steer Avg:	N/A	Steer/Heifer Avg: \$236.05
Live Heifer Avg:	N/A	Dressed Neg. Grid Vol: 84
Dressed Steer Avg:	N/A	Steer/Heifer Avg: \$222.02
Dressed Heifer Avg:	N/A	TOTAL VOLUME: 3,933
LM CT106	TOTAL WK TO DATE VOLUME:	17,456
Committed:	1,088	Delivered: 7,336

LM CT137	IA-MN	LM CT109
Neg. Cash Volume:	1,864	Dressed Formula Vol: 1,831
Live Steer Avg:	\$143.37	Steer/Heifer Avg: \$224.30
Live Heifer Avg:	N/A	Dressed Neg. Grid Vol: 1,112
Dressed Steer Avg:	\$226.71	Steer/Heifer Avg: \$227.35
Dressed Heifer Avg:	\$226.00	TOTAL VOLUME: 4,807
LM CT106	TOTAL WK TO DATE VOLUME:	36,535
Committed:	3,885	Delivered: 7,445

Thursday cash trading was mostly inactive with light demand in Texas and Nebraska. In the Western Cornbelt cash trading was limited on light demand. In Kansas and Colorado cash trading was at a standstill. Not enough trades for a market trend. In the Southern Plains on Wednesday with live traded at 139.00. In Nebraska dressed traded on Wednesday at 226.00. Tuesday live traded from 140.00-142.00. In the Western Cornbelt on Wednesday with live and dressed at 143.00 and at 226.00. In Colorado was on Tuesday with live from 140.00-142.00.

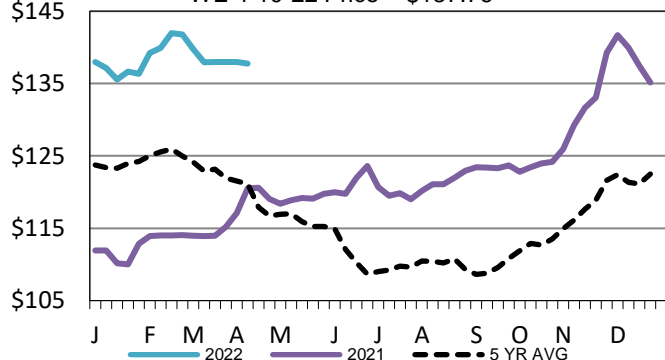
5-Area Live Steer Weighted Average

WE 4-10-22 Price = \$138.82



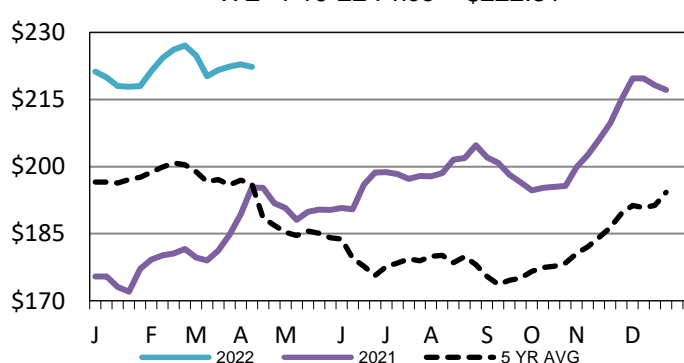
Kansas Weekly Live Steer Weighted Average

WE 4-10-22 Price = \$137.76



Iowa-Minnesota Wkly Dress Steer Wtd Avg

WE 4-10-22 Price = \$222.31



USDA Livestock, Poultry and Grain Market News

St. Joseph, Missouri

Phone: 816-676-7000

stjoe.lpgmn@ams.usda.gov