

Daily Direct Steer and Heifer Slaughter Cattle Summary

For Trade on:

Friday, April 01, 2022

LM CT100	5-AREA	LM CT109
Neg. Cash Volume:	8,413	Dressed Formula Vol: 37,455
Live Steer Avg:	\$138.97	Steer/Heifer Avg: \$222.54
Live Heifer Avg:	\$138.41	Dressed Neg. Grid Vol: 870
Dressed Steer Avg:	\$223.32	Steer/Heifer Avg: \$224.51
Dressed Heifer Avg:	\$222.00	TOTAL VOLUME: 46,738
LM CT106	TOTAL WK TO DATE VOLUME:	307,375
Committed:	76,373	Delivered: 94,589

LM CT118	TX-OK-NM	LM CT109
Neg. Cash Volume:	0	Dressed Formula Vol: 13,511
Live Steer Avg:	N/A	Steer/Heifer Avg: \$220.02
Live Heifer Avg:	N/A	Dressed Neg. Grid Vol: 0
Dressed Steer Avg:	N/A	Steer/Heifer Avg: N/A
Dressed Heifer Avg:	N/A	TOTAL VOLUME: 13,511
LM CT106	TOTAL WK TO DATE VOLUME:	80,035
Committed:	26,851	Delivered: 26,440

LM CT121	KANSAS	LM CT109
Neg. Cash Volume:	40	Dressed Formula Vol: 13,762
Live Steer Avg:	N/A	Steer/Heifer Avg: \$221.81
Live Heifer Avg:	N/A	Dressed Neg. Grid Vol: 0
Dressed Steer Avg:	\$222.00	Steer/Heifer Avg: N/A
Dressed Heifer Avg:	N/A	TOTAL VOLUME: 13,802
LM CT106	TOTAL WK TO DATE VOLUME:	82,817
Committed:	14,260	Delivered: 26,081

LM CT124	NEBRASKA	LM CT109
Neg. Cash Volume:	6,236	Dressed Formula Vol: 5,007
Live Steer Avg:	\$138.00	Steer/Heifer Avg: \$230.69
Live Heifer Avg:	\$138.00	Dressed Neg. Grid Vol: 416
Dressed Steer Avg:	\$224.16	Steer/Heifer Avg: \$222.83
Dressed Heifer Avg:	\$222.00	TOTAL VOLUME: 11,659
LM CT106	TOTAL WK TO DATE VOLUME:	75,121
Committed:	14,569	Delivered: 19,224

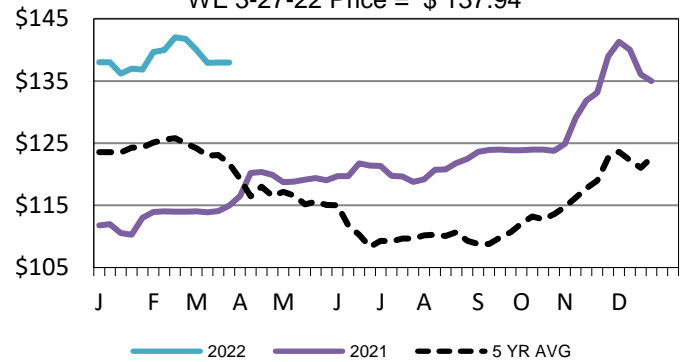
LM CT134	COLORADO	LM CT109
Neg. Cash Volume:	0	Dressed Formula Vol: 1,127
Live Steer Avg:	N/A	Steer/Heifer Avg: \$219.99
Live Heifer Avg:	N/A	Dressed Neg. Grid Vol: 0
Dressed Steer Avg:	N/A	Steer/Heifer Avg: N/A
Dressed Heifer Avg:	N/A	TOTAL VOLUME: 1,127
LM CT106	TOTAL WK TO DATE VOLUME:	30,605
Committed:	12,520	Delivered: 6,255

LM CT137	IA-MN	LM CT109
Neg. Cash Volume:	2,137	Dressed Formula Vol: 4,116
Live Steer Avg:	\$141.05	Steer/Heifer Avg: \$224.10
Live Heifer Avg:	\$141.47	Dressed Neg. Grid Vol: 454
Dressed Steer Avg:	\$222.00	Steer/Heifer Avg: \$226.04
Dressed Heifer Avg:	\$222.00	TOTAL VOLUME: 6,707
LM CT106	TOTAL WK TO DATE VOLUME:	39,490
Committed:	8,173	Delivered: 16,589

On Friday in Nebraska cash trading was slow with moderate demand. Compared to Thursday the last reported market, live purchases traded steady to 2.00 lower at 138.00. Not enough purchases for a market trend. On Thursday dressed traded at 222.00. In the Western Cornbelt cash trading was limited on light demand. For Friday in the Southern Plains cash trading was mostly inactive on light demand. Not enough purchases in these regions for an adequate market trend. In the Southern Plains on Wednesday live purchases traded at 138.00. In the Western Cornbelt on Thursday live and dressed traded from 140.00-143.00 and at 222.00, respectively.

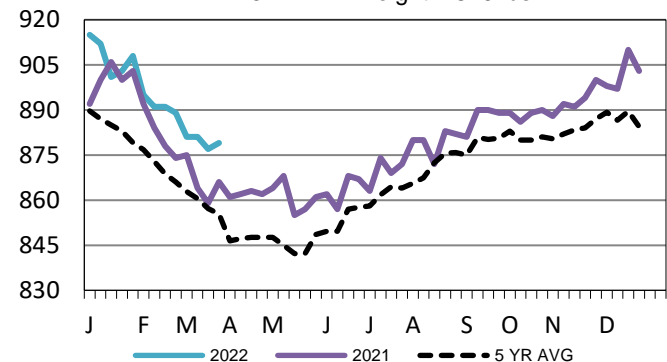
TX-OK-NM Wkly Live Steer Wtd Avg

WE 3-27-22 Price = \$ 137.94



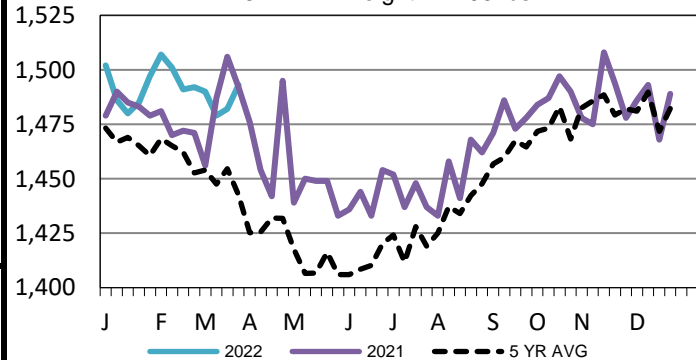
Kansas Formula Carcass Weights

WE 3-27-22 Weight = 879 lbs



5-Area Negotiated Cash Live Steer Weights

WE 3-27-22 Weight = 1493 lbs



USDA Livestock, Poultry and Grain Market News

St. Joseph, Missouri

Phone: 816-676-7000

stjoe.lpgmn@ams.usda.gov