

Daily Direct Steer and Heifer Slaughter Cattle Summary

For Trade on:

Wednesday, March 30, 2022

LM CT100	5-AREA	LM CT109
Neg. Cash Volume:	40,678	Dressed Formula Vol: 17,237
Live Steer Avg:	\$138.69	Steer/Heifer Avg: \$221.41
Live Heifer Avg:	\$138.18	Dressed Neg. Grid Vol: 1,217
Dressed Steer Avg:	\$222.74	Steer/Heifer Avg: \$224.71
Dressed Heifer Avg:	\$222.00	TOTAL VOLUME: 59,132
LM CT106	TOTAL WK TO DATE VOLUME:	164,491
Committed:	108,670	Delivered: 72,277

LM CT118	TX-OK-NM	LM CT109
Neg. Cash Volume:	8,942	Dressed Formula Vol: 9,725
Live Steer Avg:	\$138.00	Steer/Heifer Avg: \$220.21
Live Heifer Avg:	\$138.00	Dressed Neg. Grid Vol: 0
Dressed Steer Avg:	N/A	Steer/Heifer Avg: N/A
Dressed Heifer Avg:	N/A	TOTAL VOLUME: 18,667
LM CT106	TOTAL WK TO DATE VOLUME:	56,016
Committed:	29,734	Delivered: 19,130

LM CT121	KANSAS	LM CT109
Neg. Cash Volume:	15,115	Dressed Formula Vol: 1,417
Live Steer Avg:	\$137.99	Steer/Heifer Avg: \$223.32
Live Heifer Avg:	\$138.00	Dressed Neg. Grid Vol: 155
Dressed Steer Avg:	N/A	Steer/Heifer Avg: \$220.07
Dressed Heifer Avg:	N/A	TOTAL VOLUME: 16,687
LM CT106	TOTAL WK TO DATE VOLUME:	45,733
Committed:	33,252	Delivered: 19,463

LM CT124	NEBRASKA	LM CT109
Neg. Cash Volume:	10,882	Dressed Formula Vol: 3,529
Live Steer Avg:	\$139.52	Steer/Heifer Avg: \$223.49
Live Heifer Avg:	\$138.97	Dressed Neg. Grid Vol: 558
Dressed Steer Avg:	\$222.54	Steer/Heifer Avg: \$225.40
Dressed Heifer Avg:	N/A	TOTAL VOLUME: 14,969
LM CT106	TOTAL WK TO DATE VOLUME:	30,379
Committed:	18,313	Delivered: 17,119

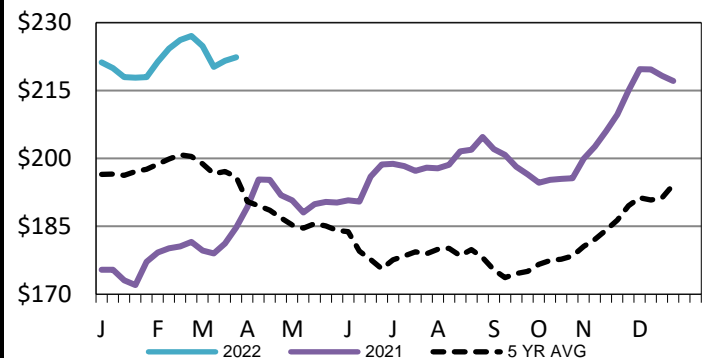
LM CT134	COLORADO	LM CT109
Neg. Cash Volume:	0	Dressed Formula Vol: 586
Live Steer Avg:	N/A	Steer/Heifer Avg: \$225.26
Live Heifer Avg:	N/A	Dressed Neg. Grid Vol: 0
Dressed Steer Avg:	N/A	Steer/Heifer Avg: N/A
Dressed Heifer Avg:	N/A	TOTAL VOLUME: 586
LM CT106	TOTAL WK TO DATE VOLUME:	20,354
Committed:	15,003	Delivered: 8,183

LM CT137	IA-MN	LM CT109
Neg. Cash Volume:	5,739	Dressed Formula Vol: 2,017
Live Steer Avg:	\$140.31	Steer/Heifer Avg: \$222.30
Live Heifer Avg:	\$139.00	Dressed Neg. Grid Vol: 504
Dressed Steer Avg:	\$222.83	Steer/Heifer Avg: \$225.36
Dressed Heifer Avg:	\$222.00	TOTAL VOLUME: 8,260
LM CT106	TOTAL WK TO DATE VOLUME:	12,560
Committed:	12,368	Delivered: 8,382

Wednesday cash trading and demand were moderate in the Southern Plains. Compared to last week live traded steady at 138.00. In Nebraska and the Western Cornbelt cash trading was slow on moderate demand. In Nebraska, compared to last week, live traded steady to 2.00 higher from 138.00-140.00. Not enough dressed for a market trend. Last week dressed traded at 221.00. In the Western Cornbelt a few live and dressed traded at 139.00 and 222.00. However, not enough for a market trend. Last week, live and dressed ranged from 138.00-142.00 and 221.00-225.00.

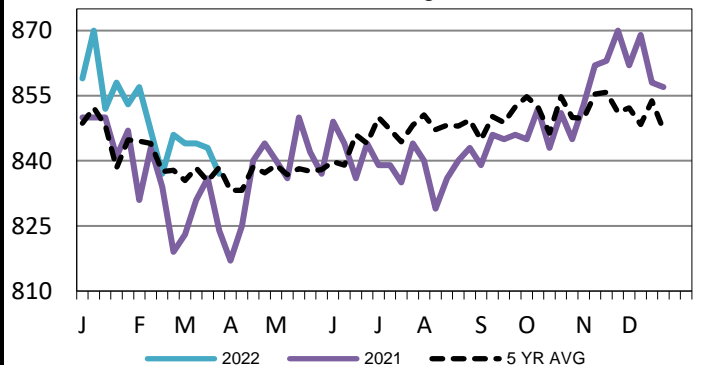
Iowa-Minnesota Wkly Dress Steer Wtd Avg

WE 3-27-22 Price = \$222.39



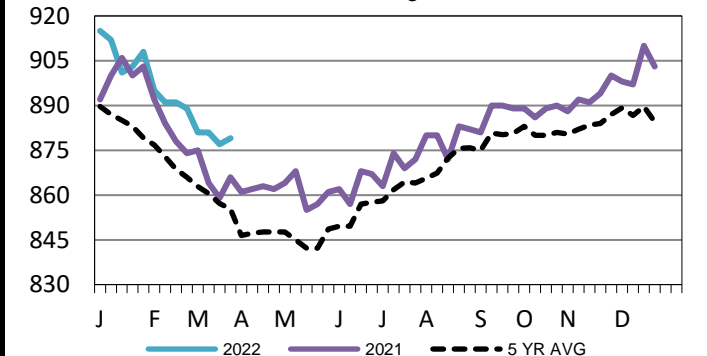
TX-OK-NM Formula Carcass Weights

WE 3-27-22 Weight = 837 lbs



Kansas Formula Carcass Weights

WE 3-27-22 Weight = 879 lbs



USDA Livestock, Poultry and Grain Market News

St. Joseph, Missouri

Phone: 816-676-7000

stjoe.lpgmn@ams.usda.gov