

## Daily Direct Steer and Heifer Slaughter Cattle Summary

For Trade on:

Tuesday, March 22, 2022

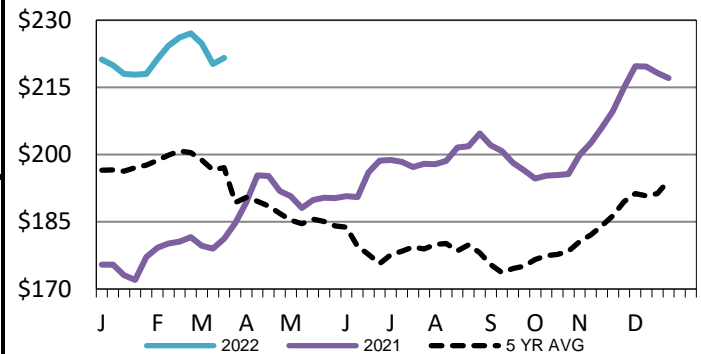
<a href="#">LM CT100</a>	<b>5-AREA</b>	<a href="#">LM CT109</a>
<b>Neg. Cash Volume:</b>	10,839	<b>Dressed Formula Vol:</b> 41,190
Live Steer Avg:	\$137.99	Steer/Heifer Avg: \$225.09
Live Heifer Avg:	\$138.00	<b>Dressed Neg. Grid Vol:</b> 1,357
Dressed Steer Avg:	\$220.00	Steer/Heifer Avg: \$223.31
Dressed Heifer Avg:	\$223.00	<b>TOTAL VOLUME:</b> 53,386
<a href="#">LM CT106</a>	<b>TOTAL WK TO DATE VOLUME:</b>	<b>100,247</b>
<b>Committed:</b>	<b>80,751</b>	<b>Delivered:</b> 70,223

For Tuesday negotiated cash trading was slow on light demand in the Southern Plains with live purchases steady compared to last week at 138.00 on a light test. Negotiated cash trading in Nebraska was slow on light demand with live purchases steady with last week at 138.00. Not enough dressed purchases for a market trend. Last week in Nebraska dressed purchases traded at 221.00. Negotiated cash trading was mostly inactive on very light demand in the Western Cornbelt. Not enough purchases for a market trend. Last week in the Western Cornbelt live and dressed purchases traded from 140.00-142.00 and at 222.00, respectively.

<a href="#">LM CT118</a>	<b>TX-OK-NM</b>	<a href="#">LM CT109</a>
<b>Neg. Cash Volume:</b>	1,048	<b>Dressed Formula Vol:</b> 18,265
Live Steer Avg:	\$138.00	Steer/Heifer Avg: \$221.52
Live Heifer Avg:	\$138.00	<b>Dressed Neg. Grid Vol:</b> 0
Dressed Steer Avg:	N/A	Steer/Heifer Avg: N/A
Dressed Heifer Avg:	N/A	<b>TOTAL VOLUME:</b> 19,313
<a href="#">LM CT106</a>	<b>TOTAL WK TO DATE VOLUME:</b>	<b>32,473</b>
<b>Committed:</b>	<b>30,794</b>	<b>Delivered:</b> 17,911

## Iowa-Minnesota Wkly Dress Steer Wtd Avg

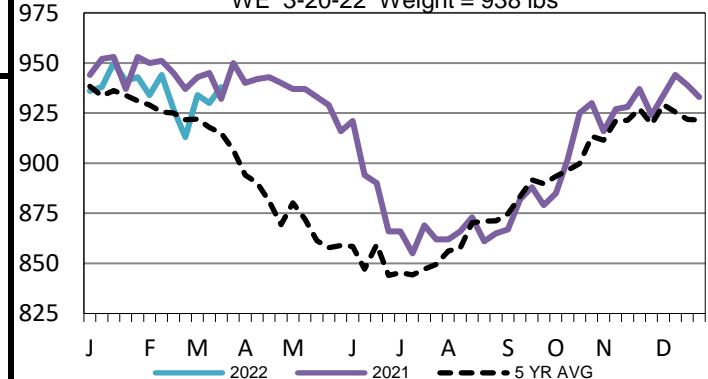
WE 3-20-22 Price = \$221.59



<a href="#">LM CT121</a>	<b>KANSAS</b>	<a href="#">LM CT109</a>
<b>Neg. Cash Volume:</b>	4,966	<b>Dressed Formula Vol:</b> 8,605
Live Steer Avg:	\$137.98	Steer/Heifer Avg: \$221.22
Live Heifer Avg:	\$138.00	<b>Dressed Neg. Grid Vol:</b> 580
Dressed Steer Avg:	N/A	Steer/Heifer Avg: \$219.19
Dressed Heifer Avg:	N/A	<b>TOTAL VOLUME:</b> 14,151
<a href="#">LM CT106</a>	<b>TOTAL WK TO DATE VOLUME:</b>	<b>31,525</b>
<b>Committed:</b>	<b>23,998</b>	<b>Delivered:</b> 18,127

## Iowa-Minnesota Formula Carcass Weights

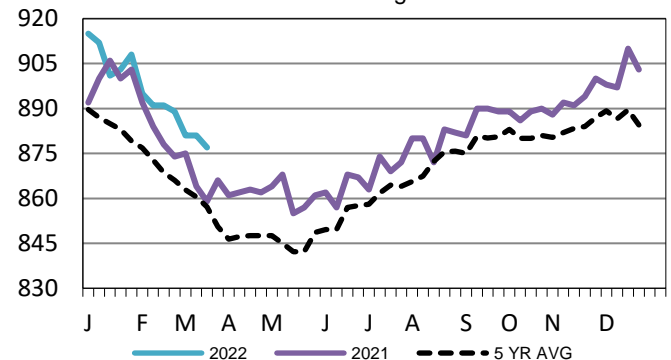
WE 3-20-22 Weight = 938 lbs



<a href="#">LM CT124</a>	<b>NEBRASKA</b>	<a href="#">LM CT109</a>
<b>Neg. Cash Volume:</b>	4,237	<b>Dressed Formula Vol:</b> 6,831
Live Steer Avg:	\$138.00	Steer/Heifer Avg: \$235.05
Live Heifer Avg:	\$138.00	<b>Dressed Neg. Grid Vol:</b> 225
Dressed Steer Avg:	N/A	Steer/Heifer Avg: \$229.66
Dressed Heifer Avg:	N/A	<b>TOTAL VOLUME:</b> 11,293
<a href="#">LM CT106</a>	<b>TOTAL WK TO DATE VOLUME:</b>	<b>19,889</b>
<b>Committed:</b>	<b>14,630</b>	<b>Delivered:</b> 17,973

## Kansas Formula Carcass Weights

WE 3-20-22 Weight = 877 lbs



<a href="#">LM CT134</a>	<b>COLORADO</b>	<a href="#">LM CT109</a>
<b>Neg. Cash Volume:</b>	0	<b>Dressed Formula Vol:</b> 5,051
Live Steer Avg:	N/A	Steer/Heifer Avg: \$228.72
Live Heifer Avg:	N/A	<b>Dressed Neg. Grid Vol:</b> 231
Dressed Steer Avg:	N/A	Steer/Heifer Avg: \$220.63
Dressed Heifer Avg:	N/A	<b>TOTAL VOLUME:</b> 5,282
<a href="#">LM CT106</a>	<b>TOTAL WK TO DATE VOLUME:</b>	<b>9,957</b>
<b>Committed:</b>	<b>4,924</b>	<b>Delivered:</b> 8,198

<a href="#">LM CT137</a>	<b>IA-MN</b>	<a href="#">LM CT109</a>
<b>Neg. Cash Volume:</b>	588	<b>Dressed Formula Vol:</b> 2,573
Live Steer Avg:	N/A	Steer/Heifer Avg: \$230.25
Live Heifer Avg:	N/A	<b>Dressed Neg. Grid Vol:</b> 321
Dressed Steer Avg:	\$220.00	Steer/Heifer Avg: \$228.26
Dressed Heifer Avg:	\$223.00	<b>TOTAL VOLUME:</b> 3,482
<a href="#">LM CT106</a>	<b>TOTAL WK TO DATE VOLUME:</b>	<b>6,833</b>
<b>Committed:</b>	<b>6,405</b>	<b>Delivered:</b> 8,014

## USDA Livestock, Poultry and Grain Market News

St. Joseph, Missouri

Phone: 816-676-7000

[stjoe.lpgmn@ams.usda.gov](mailto:stjoe.lpgmn@ams.usda.gov)