

## Daily Direct Steer and Heifer Slaughter Cattle Summary

For Trade on:

Friday, March 18, 2022

<a href="#">LM CT100</a>	<b>5-AREA</b>	<a href="#">LM CT109</a>
<b>Neg. Cash Volume:</b>	11,311	<b>Dressed Formula Vol:</b> 45,757
Live Steer Avg:	\$141.05	Steer/Heifer Avg: \$221.50
Live Heifer Avg:	\$139.32	<b>Dressed Neg. Grid Vol:</b> 1,183
Dressed Steer Avg:	\$220.98	Steer/Heifer Avg: \$225.95
Dressed Heifer Avg:	\$221.41	<b>TOTAL VOLUME:</b> 58,251
<a href="#">LM CT106</a>	<b>TOTAL WK TO DATE VOLUME:</b>	<b>275,792</b>
<b>Committed:</b>	<b>69,381</b>	<b>Delivered:</b> 78,734

<a href="#">LM CT118</a>	<b>TX-OK-NM</b>	<a href="#">LM CT109</a>
<b>Neg. Cash Volume:</b>	104	<b>Dressed Formula Vol:</b> 13,379
Live Steer Avg:	N/A	Steer/Heifer Avg: \$219.47
Live Heifer Avg:	N/A	<b>Dressed Neg. Grid Vol:</b> 0
Dressed Steer Avg:	N/A	Steer/Heifer Avg: N/A
Dressed Heifer Avg:	N/A	<b>TOTAL VOLUME:</b> 13,483
<a href="#">LM CT106</a>	<b>TOTAL WK TO DATE VOLUME:</b>	<b>73,290</b>
<b>Committed:</b>	<b>8,295</b>	<b>Delivered:</b> 17,225

<a href="#">LM CT121</a>	<b>KANSAS</b>	<a href="#">LM CT109</a>
<b>Neg. Cash Volume:</b>	813	<b>Dressed Formula Vol:</b> 18,451
Live Steer Avg:	N/A	Steer/Heifer Avg: \$220.93
Live Heifer Avg:	\$138.00	<b>Dressed Neg. Grid Vol:</b> 86
Dressed Steer Avg:	\$221.00	Steer/Heifer Avg: \$221.91
Dressed Heifer Avg:	N/A	<b>TOTAL VOLUME:</b> 19,350
<a href="#">LM CT106</a>	<b>TOTAL WK TO DATE VOLUME:</b>	<b>85,488</b>
<b>Committed:</b>	<b>16,053</b>	<b>Delivered:</b> 19,671

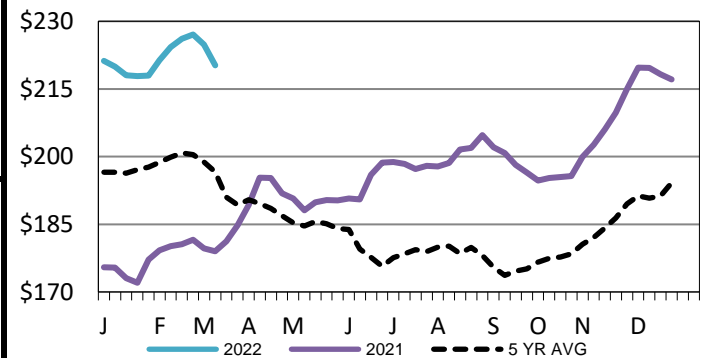
<a href="#">LM CT124</a>	<b>NEBRASKA</b>	<a href="#">LM CT109</a>
<b>Neg. Cash Volume:</b>	1,662	<b>Dressed Formula Vol:</b> 6,751
Live Steer Avg:	\$138.00	Steer/Heifer Avg: \$225.95
Live Heifer Avg:	\$138.00	<b>Dressed Neg. Grid Vol:</b> 437
Dressed Steer Avg:	\$221.09	Steer/Heifer Avg: \$227.93
Dressed Heifer Avg:	N/A	<b>TOTAL VOLUME:</b> 8,850
<a href="#">LM CT106</a>	<b>TOTAL WK TO DATE VOLUME:</b>	<b>63,513</b>
<b>Committed:</b>	<b>23,359</b>	<b>Delivered:</b> 21,799

<a href="#">LM CT134</a>	<b>COLORADO</b>	<a href="#">LM CT109</a>
<b>Neg. Cash Volume:</b>	0	<b>Dressed Formula Vol:</b> 4,921
Live Steer Avg:	N/A	Steer/Heifer Avg: \$222.46
Live Heifer Avg:	N/A	<b>Dressed Neg. Grid Vol:</b> 130
Dressed Steer Avg:	N/A	Steer/Heifer Avg: \$222.07
Dressed Heifer Avg:	N/A	<b>TOTAL VOLUME:</b> 5,051
<a href="#">LM CT106</a>	<b>TOTAL WK TO DATE VOLUME:</b>	<b>20,890</b>
<b>Committed:</b>	<b>9,545</b>	<b>Delivered:</b> 5,988

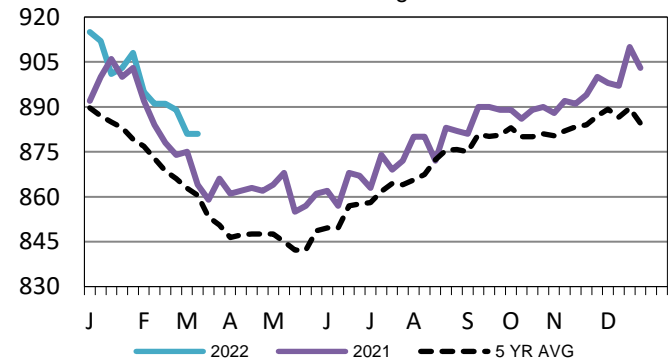
<a href="#">LM CT137</a>	<b>IA-MN</b>	<a href="#">LM CT109</a>
<b>Neg. Cash Volume:</b>	8,732	<b>Dressed Formula Vol:</b> 2,488
Live Steer Avg:	\$141.46	Steer/Heifer Avg: \$223.17
Live Heifer Avg:	\$140.51	<b>Dressed Neg. Grid Vol:</b> 544
Dressed Steer Avg:	\$220.65	Steer/Heifer Avg: \$226.00
Dressed Heifer Avg:	\$221.41	<b>TOTAL VOLUME:</b> 11,764
<a href="#">LM CT106</a>	<b>TOTAL WK TO DATE VOLUME:</b>	<b>33,497</b>
<b>Committed:</b>	<b>12,129</b>	<b>Delivered:</b> 14,051

For Friday in the Western Cornbelt negotiated cash trading was slow on light demand. Compared to the last reported market on Thursday live purchases traded 2.00 higher at 142.00. Thursday was the last dressed purchase market at 222.00. For Friday in the Southern Plains and Nebraska negotiated cash trading was mostly inactive on light demand. Not enough purchases for a full market trend. The last reported market in these regions was on Thursday with live purchases at 138.00 and dressed purchases, in Nebraska, at 221.00.

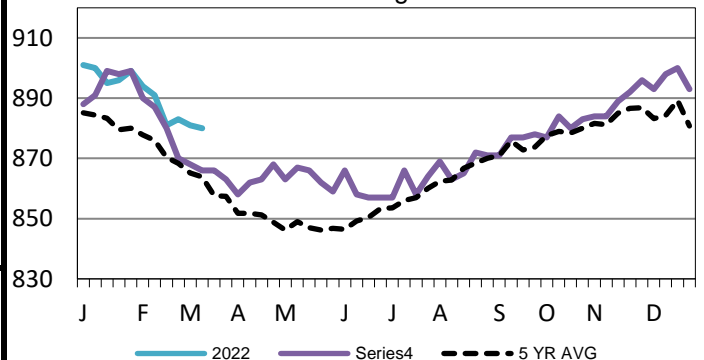
**Iowa-Minnesota Wkly Dress Steer Wtd Avg**  
WE 3-13-22 Price = \$220.25



**Kansas Formula Carcass Weights**  
WE 3-13-22 Weight = 881 lbs



**5-Area Formula Carcass Weight**  
WE 3-13-22 Weight = 880 lbs



## USDA Livestock, Poultry and Grain Market News

St. Joseph, Missouri

Phone: 816-676-7000

[stjoe.lpgmn@ams.usda.gov](mailto:stjoe.lpgmn@ams.usda.gov)