

Daily Direct Steer and Heifer Slaughter Cattle Summary

For Trade on:

Wednesday, March 09, 2022

LM CT100	5-AREA	LM CT109
Neg. Cash Volume:	34,430	Dressed Formula Vol: 29,500
Live Steer Avg:	\$138.43	Steer/Heifer Avg: \$227.69
Live Heifer Avg:	\$13.18	Dressed Neg. Grid Vol: 851
Dressed Steer Avg:	\$220.13	Steer/Heifer Avg: \$227.65
Dressed Heifer Avg:	\$219.97	TOTAL VOLUME: 64,781
LM CT106	TOTAL WK TO DATE VOLUME:	184,706
Committed:	93,997	Delivered: 73,822

LM CT118	TX-OK-NM	LM CT109
Neg. Cash Volume:	57	Dressed Formula Vol: 10,211
Live Steer Avg:	N/A	Steer/Heifer Avg: \$222.63
Live Heifer Avg:	\$138.00	Dressed Neg. Grid Vol: 0
Dressed Steer Avg:	N/A	Steer/Heifer Avg: N/A
Dressed Heifer Avg:	N/A	TOTAL VOLUME: 10,268
LM CT106	TOTAL WK TO DATE VOLUME:	48,365
Committed:	7,343	Delivered: 18,841

LM CT121	KANSAS	LM CT109
Neg. Cash Volume:	3,852	Dressed Formula Vol: 225
Live Steer Avg:	\$137.74	Steer/Heifer Avg: \$226.54
Live Heifer Avg:	\$138.00	Dressed Neg. Grid Vol: 0
Dressed Steer Avg:	\$220.00	Steer/Heifer Avg: N/A
Dressed Heifer Avg:	\$220.00	TOTAL VOLUME: 4,077
LM CT106	TOTAL WK TO DATE VOLUME:	52,743
Committed:	25,730	Delivered: 18,976

LM CT124	NEBRASKA	LM CT109
Neg. Cash Volume:	20,579	Dressed Formula Vol: 5,085
Live Steer Avg:	\$138.44	Steer/Heifer Avg: \$231.64
Live Heifer Avg:	\$138.14	Dressed Neg. Grid Vol: 445
Dressed Steer Avg:	\$220.11	Steer/Heifer Avg: \$225.42
Dressed Heifer Avg:	\$220.08	TOTAL VOLUME: 26,109
LM CT106	TOTAL WK TO DATE VOLUME:	46,844
Committed:	37,485	Delivered: 19,593

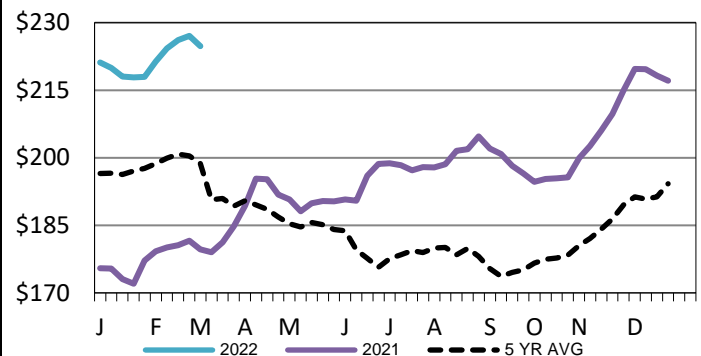
LM CT134	COLORADO	LM CT109
Neg. Cash Volume:	0	Dressed Formula Vol: 4,997
Live Steer Avg:	N/A	Steer/Heifer Avg: \$238.41
Live Heifer Avg:	N/A	Dressed Neg. Grid Vol: 72
Dressed Steer Avg:	N/A	Steer/Heifer Avg: \$222.83
Dressed Heifer Avg:	N/A	TOTAL VOLUME: 5,069
LM CT106	TOTAL WK TO DATE VOLUME:	16,497
Committed:	8,746	Delivered: 7,662

LM CT137	IA-MN	LM CT109
Neg. Cash Volume:	9,942	Dressed Formula Vol: 1,879
Live Steer Avg:	\$138.82	Steer/Heifer Avg: \$226.64
Live Heifer Avg:	\$138.36	Dressed Neg. Grid Vol: 409
Dressed Steer Avg:	\$220.27	Steer/Heifer Avg: \$230.81
Dressed Heifer Avg:	\$219.76	TOTAL VOLUME: 12,230
LM CT106	TOTAL WK TO DATE VOLUME:	20,946
Committed:	14,693	Delivered: 8,750

Wednesday in Nebraska cash trading and demand were moderate. Live traded steady at 138.00, compared to Tuesday. Compared to last week dressed traded 4.00-5.00 lower at 220.00. In Kansas and Western Cornbelt cash trading was slow on moderate demand. In Kansas live traded steady at 138.00, compared to Tuesday. In the Western Cornbelt compared to last week live traded 2.00-4.00 lower from 138.00-140.00 and dressed traded 3.00-5.00 lower from 219.00-222.00. Wednesday in Texas cash trading was mostly inactive with very light demand. Tuesday live traded at 138.00.

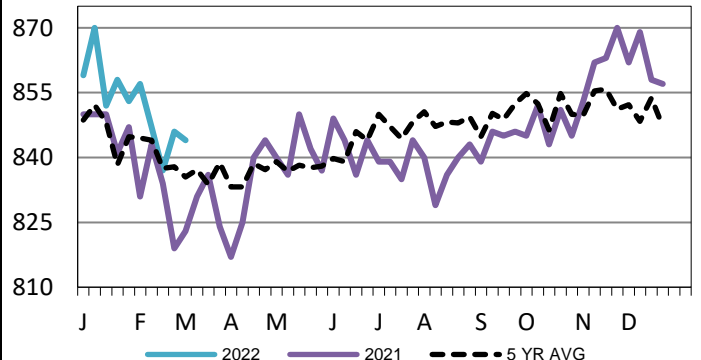
Iowa-Minnesota Wkly Dress Steer Wtd Avg

WE 3-6-22 Price = \$224.81



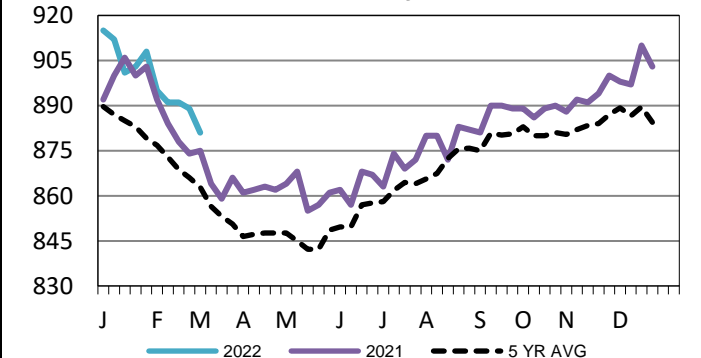
TX-OK-NM Formula Carcass Weights

WE 3-6-22 Weight = 844 lbs



Kansas Formula Carcass Weights

WE 3-6-22 Weight = 881 lbs



USDA Livestock, Poultry and Grain Market News

St. Joseph, Missouri

Phone: 816-676-7000

stjoe.lpgmn@ams.usda.gov