

Daily Direct Steer and Heifer Slaughter Cattle Summary

For Trade on:

Thursday, February 24, 2022

LM CT100	5-AREA	LM CT109
Neg. Cash Volume:	22,923	Dressed Formula Vol: 30,748
Live Steer Avg:	\$143.03	Steer/Heifer Avg: \$227.06
Live Heifer Avg:	\$142.24	Dressed Neg. Grid Vol: 1,732
Dressed Steer Avg:	\$226.97	Steer/Heifer Avg: \$225.36
Dressed Heifer Avg:	\$227.00	TOTAL VOLUME: 55,403
LM CT106	TOTAL WK TO DATE VOLUME:	211,507
Committed:	89,699	Delivered: 68,589

LM CT118	TX-OK-NM	LM CT109
Neg. Cash Volume:	1,887	Dressed Formula Vol: 11,724
Live Steer Avg:	\$141.62	Steer/Heifer Avg: \$225.16
Live Heifer Avg:	\$142.00	Dressed Neg. Grid Vol: 0
Dressed Steer Avg:	N/A	Steer/Heifer Avg: N/A
Dressed Heifer Avg:	N/A	TOTAL VOLUME: 13,611
LM CT106	TOTAL WK TO DATE VOLUME:	50,431
Committed:	25,418	Delivered: 14,787

LM CT121	KANSAS	LM CT109
Neg. Cash Volume:	7,065	Dressed Formula Vol: 6,256
Live Steer Avg:	\$141.68	Steer/Heifer Avg: \$225.35
Live Heifer Avg:	\$141.49	Dressed Neg. Grid Vol: 379
Dressed Steer Avg:	\$227.00	Steer/Heifer Avg: \$227.98
Dressed Heifer Avg:	N/A	TOTAL VOLUME: 13,700
LM CT106	TOTAL WK TO DATE VOLUME:	60,568
Committed:	30,169	Delivered: 21,756

LM CT124	NEBRASKA	LM CT109
Neg. Cash Volume:	3,980	Dressed Formula Vol: 6,904
Live Steer Avg:	\$142.33	Steer/Heifer Avg: \$228.25
Live Heifer Avg:	\$142.89	Dressed Neg. Grid Vol: 418
Dressed Steer Avg:	\$226.70	Steer/Heifer Avg: \$223.75
Dressed Heifer Avg:	\$227.00	TOTAL VOLUME: 11,302
LM CT106	TOTAL WK TO DATE VOLUME:	48,695
Committed:	14,372	Delivered: 16,103

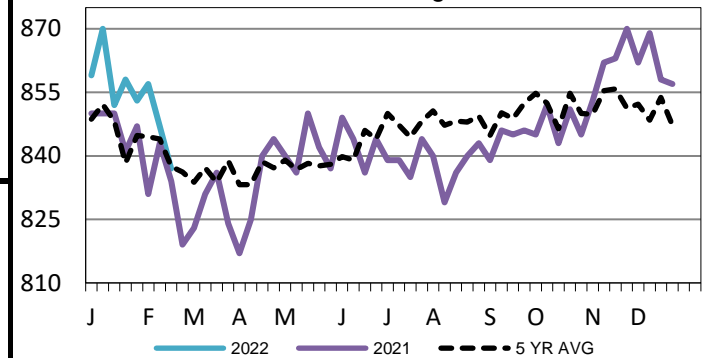
LM CT134	COLORADO	LM CT109
Neg. Cash Volume:	0	Dressed Formula Vol: 3,625
Live Steer Avg:	N/A	Steer/Heifer Avg: \$233.70
Live Heifer Avg:	N/A	Dressed Neg. Grid Vol: 0
Dressed Steer Avg:	N/A	Steer/Heifer Avg: N/A
Dressed Heifer Avg:	N/A	TOTAL VOLUME: 3,625
LM CT106	TOTAL WK TO DATE VOLUME:	20,051
Committed:	6,444	Delivered: 5,988

LM CT137	IA-MN	LM CT109
Neg. Cash Volume:	9,991	Dressed Formula Vol: 2,502
Live Steer Avg:	\$144.39	Steer/Heifer Avg: \$228.04
Live Heifer Avg:	\$144.12	Dressed Neg. Grid Vol: 935
Dressed Steer Avg:	\$227.36	Steer/Heifer Avg: \$225.02
Dressed Heifer Avg:	\$227.00	TOTAL VOLUME: 13,428
LM CT106	TOTAL WK TO DATE VOLUME:	32,737
Committed:	13,296	Delivered: 9,955

Thursday cash trading was slow on light demand in Kansas and Western Cornbelt. In Kansas, compared to last week, live traded steady to 1.00 lower from 141.00-142.00. In the Western Cornbelt, compared to Wednesday, live traded steady to 1.00 higher from 144.00-145.00. Wednesday saw dressed from 226.00-227.00. Thursday in Texas and Nebraska cash trading was limited on light demand. In Texas, compared to last week, live traded steady at 142.00. In Nebraska Wednesday was the last reported market with live and dressed at 144.00 and 227.00.

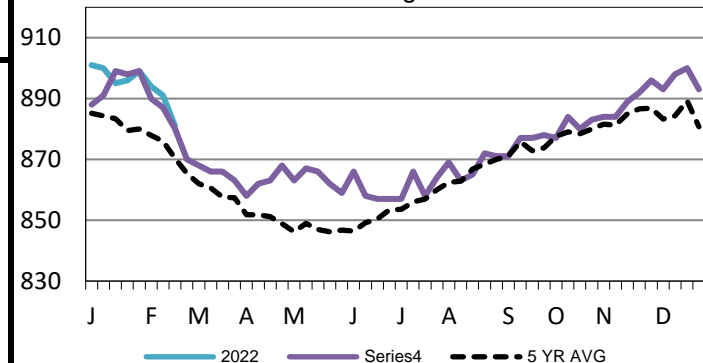
TX-OK-NM Formula Carcass Weights

WE 2-20-22 Weight = 837 lbs



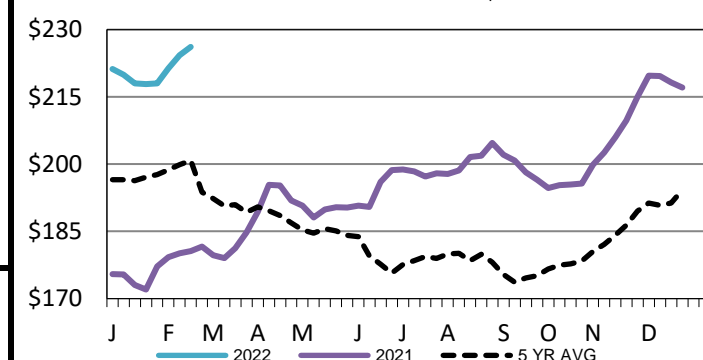
5-Area Formula Carcass Weight

WE 2-20-22 Weight = 881 lbs



Iowa-Minnesota Wkly Dress Steer Wtd Avg

WE 2-20-22 Price = \$226.14



USDA Livestock, Poultry and Grain Market News

St. Joseph, Missouri

Phone: 816-676-7000

stjoe.lpgmn@ams.usda.gov