

## Daily Direct Steer and Heifer Slaughter Cattle Summary

For Trade on:

Friday, February 18, 2022

|                          |                                 |                                     |
|--------------------------|---------------------------------|-------------------------------------|
| <a href="#">LM CT100</a> | <b>5-AREA</b>                   | <a href="#">LM CT109</a>            |
| <b>Neg. Cash Volume:</b> | 6,140                           | <b>Dressed Formula Vol:</b> 42,174  |
| Live Steer Avg:          | \$143.65                        | Steer/Heifer Avg: \$225.09          |
| Live Heifer Avg:         | \$142.84                        | <b>Dressed Neg. Grid Vol:</b> 2,173 |
| Dressed Steer Avg:       | \$225.01                        | Steer/Heifer Avg: \$222.39          |
| Dressed Heifer Avg:      | \$228.53                        | <b>TOTAL VOLUME:</b> 50,487         |
| <a href="#">LM CT106</a> | <b>TOTAL WK TO DATE VOLUME:</b> | <b>307,005</b>                      |
| <b>Committed:</b>        | <b>51,799</b>                   | <b>Delivered:</b> 97,445            |

|                          |                                 |                                    |
|--------------------------|---------------------------------|------------------------------------|
| <a href="#">LM CT118</a> | <b>TX-OK-NM</b>                 | <a href="#">LM CT109</a>           |
| <b>Neg. Cash Volume:</b> | 146                             | <b>Dressed Formula Vol:</b> 14,157 |
| Live Steer Avg:          | \$142.00                        | Steer/Heifer Avg: \$224.38         |
| Live Heifer Avg:         | \$142.00                        | <b>Dressed Neg. Grid Vol:</b> 0    |
| Dressed Steer Avg:       | N/A                             | Steer/Heifer Avg: N/A              |
| Dressed Heifer Avg:      | N/A                             | <b>TOTAL VOLUME:</b> 14,303        |
| <a href="#">LM CT106</a> | <b>TOTAL WK TO DATE VOLUME:</b> | <b>76,278</b>                      |
| <b>Committed:</b>        | <b>9,982</b>                    | <b>Delivered:</b> 22,167           |

|                          |                                 |                                    |
|--------------------------|---------------------------------|------------------------------------|
| <a href="#">LM CT121</a> | <b>KANSAS</b>                   | <a href="#">LM CT109</a>           |
| <b>Neg. Cash Volume:</b> | 0                               | <b>Dressed Formula Vol:</b> 12,023 |
| Live Steer Avg:          | N/A                             | Steer/Heifer Avg: \$223.75         |
| Live Heifer Avg:         | N/A                             | <b>Dressed Neg. Grid Vol:</b> 0    |
| Dressed Steer Avg:       | N/A                             | Steer/Heifer Avg: N/A              |
| Dressed Heifer Avg:      | N/A                             | <b>TOTAL VOLUME:</b> 12,023        |
| <a href="#">LM CT106</a> | <b>TOTAL WK TO DATE VOLUME:</b> | <b>87,749</b>                      |
| <b>Committed:</b>        | <b>6,559</b>                    | <b>Delivered:</b> 29,664           |

|                          |                                 |                                   |
|--------------------------|---------------------------------|-----------------------------------|
| <a href="#">LM CT124</a> | <b>NEBRASKA</b>                 | <a href="#">LM CT109</a>          |
| <b>Neg. Cash Volume:</b> | 955                             | <b>Dressed Formula Vol:</b> 7,734 |
| Live Steer Avg:          | N/A                             | Steer/Heifer Avg: \$227.96        |
| Live Heifer Avg:         | \$142.00                        | <b>Dressed Neg. Grid Vol:</b> 742 |
| Dressed Steer Avg:       | \$226.00                        | Steer/Heifer Avg: \$222.14        |
| Dressed Heifer Avg:      | \$229.00                        | <b>TOTAL VOLUME:</b> 9,431        |
| <a href="#">LM CT106</a> | <b>TOTAL WK TO DATE VOLUME:</b> | <b>72,053</b>                     |
| <b>Committed:</b>        | <b>15,638</b>                   | <b>Delivered:</b> 22,700          |

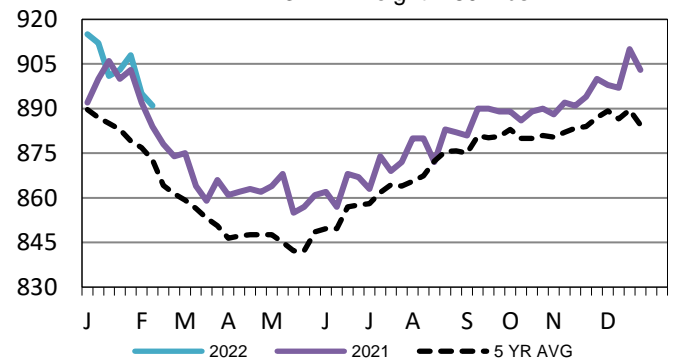
|                          |                                 |                                   |
|--------------------------|---------------------------------|-----------------------------------|
| <a href="#">LM CT134</a> | <b>COLORADO</b>                 | <a href="#">LM CT109</a>          |
| <b>Neg. Cash Volume:</b> | 0                               | <b>Dressed Formula Vol:</b> 3,175 |
| Live Steer Avg:          | N/A                             | Steer/Heifer Avg: \$224.32        |
| Live Heifer Avg:         | N/A                             | <b>Dressed Neg. Grid Vol:</b> 0   |
| Dressed Steer Avg:       | N/A                             | Steer/Heifer Avg: N/A             |
| Dressed Heifer Avg:      | N/A                             | <b>TOTAL VOLUME:</b> 3,175        |
| <a href="#">LM CT106</a> | <b>TOTAL WK TO DATE VOLUME:</b> | <b>28,282</b>                     |
| <b>Committed:</b>        | <b>11,533</b>                   | <b>Delivered:</b> 8,507           |

|                          |                                 |                                     |
|--------------------------|---------------------------------|-------------------------------------|
| <a href="#">LM CT137</a> | <b>IA-MN</b>                    | <a href="#">LM CT109</a>            |
| <b>Neg. Cash Volume:</b> | 5,039                           | <b>Dressed Formula Vol:</b> 5,357   |
| Live Steer Avg:          | \$143.71                        | Steer/Heifer Avg: \$226.47          |
| Live Heifer Avg:         | \$142.89                        | <b>Dressed Neg. Grid Vol:</b> 1,431 |
| Dressed Steer Avg:       | \$224.42                        | Steer/Heifer Avg: \$222.52          |
| Dressed Heifer Avg:      | \$227.00                        | <b>TOTAL VOLUME:</b> 11,827         |
| <a href="#">LM CT106</a> | <b>TOTAL WK TO DATE VOLUME:</b> | <b>44,199</b>                       |
| <b>Committed:</b>        | <b>8,087</b>                    | <b>Delivered:</b> 14,407            |

Friday in the Western Cornbelt cash trading was slow with light demand. A few live traded at 144.00. Wednesday was the last reported market in the Western Cornbelt with live and dressed from 142.00-143.00 and at 226.00, respectively. In the Southern Plains and Nebraska cash trading was mostly inactive on light demand. In Texas the last reported market was on Thursday with live at 142.00. Wednesday was the last reported market in Kansas and Nebraska with live at 142.00 and dressed in Nebraska at 226.00.

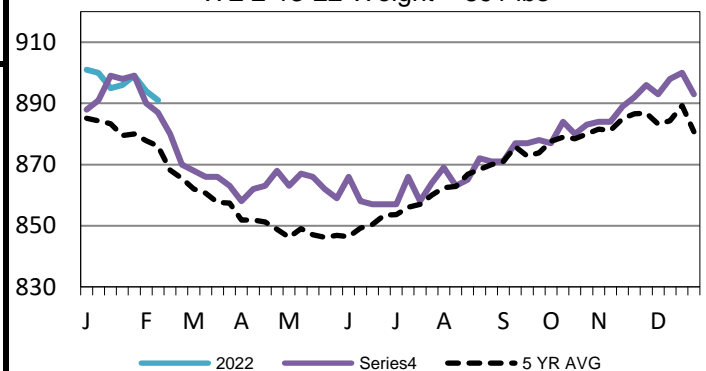
## Kansas Formula Carcass Weights

WE 2-13-22 Weight = 891 lbs



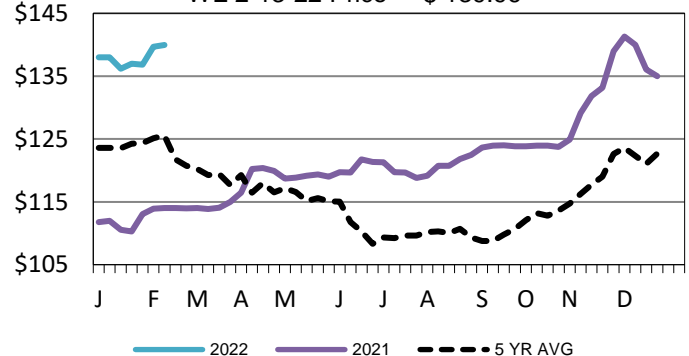
## 5-Area Formula Carcass Weight

WE 2-13-22 Weight = 891 lbs



## TX-OK-NM Wkly Live Steer Wtd Avg

WE 2-13-22 Price = \$ 139.96



## USDA Livestock, Poultry and Grain Market News

St. Joseph, Missouri

Phone: 816-676-7000

[stjoe.lpgmn@ams.usda.gov](mailto:stjoe.lpgmn@ams.usda.gov)