

Daily Direct Steer and Heifer Slaughter Cattle Summary

For Trade on:

Thursday, February 17, 2022

LM CT100	5-AREA	LM CT109
Neg. Cash Volume:	15,650	Dressed Formula Vol: 38,426
Live Steer Avg:	\$142.50	Steer/Heifer Avg: \$225.53
Live Heifer Avg:	\$142.20	Dressed Neg. Grid Vol: 1,499
Dressed Steer Avg:	\$226.72	Steer/Heifer Avg: \$221.02
Dressed Heifer Avg:	\$226.08	TOTAL VOLUME: 55,575
LM CT106	TOTAL WK TO DATE VOLUME:	256,518
Committed:	70,415	Delivered: 65,263

LM CT118	TX-OK-NM	LM CT109
Neg. Cash Volume:	2,492	Dressed Formula Vol: 10,692
Live Steer Avg:	\$142.00	Steer/Heifer Avg: \$222.43
Live Heifer Avg:	\$142.00	Dressed Neg. Grid Vol: 0
Dressed Steer Avg:	N/A	Steer/Heifer Avg: N/A
Dressed Heifer Avg:	N/A	TOTAL VOLUME: 13,184
LM CT106	TOTAL WK TO DATE VOLUME:	61,975
Committed:	13,852	Delivered: 16,707

LM CT121	KANSAS	LM CT109
Neg. Cash Volume:	802	Dressed Formula Vol: 13,125
Live Steer Avg:	\$142.00	Steer/Heifer Avg: \$223.88
Live Heifer Avg:	\$142.00	Dressed Neg. Grid Vol: 148
Dressed Steer Avg:	N/A	Steer/Heifer Avg: \$213.79
Dressed Heifer Avg:	N/A	TOTAL VOLUME: 14,075
LM CT106	TOTAL WK TO DATE VOLUME:	75,726
Committed:	29,250	Delivered: 15,966

LM CT124	NEBRASKA	LM CT109
Neg. Cash Volume:	7,040	Dressed Formula Vol: 5,464
Live Steer Avg:	\$142.31	Steer/Heifer Avg: \$229.59
Live Heifer Avg:	\$142.07	Dressed Neg. Grid Vol: 433
Dressed Steer Avg:	\$226.00	Steer/Heifer Avg: \$220.13
Dressed Heifer Avg:	\$226.00	TOTAL VOLUME: 12,937
LM CT106	TOTAL WK TO DATE VOLUME:	62,622
Committed:	7,921	Delivered: 16,210

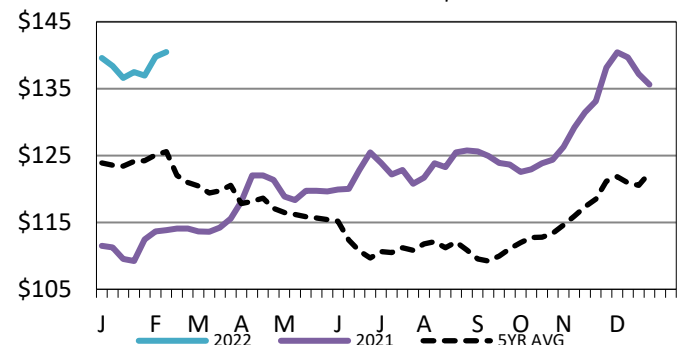
LM CT134	COLORADO	LM CT109
Neg. Cash Volume:	0	Dressed Formula Vol: 6,549
Live Steer Avg:	N/A	Steer/Heifer Avg: \$229.99
Live Heifer Avg:	N/A	Dressed Neg. Grid Vol: 257
Dressed Steer Avg:	N/A	Steer/Heifer Avg: \$218.74
Dressed Heifer Avg:	N/A	TOTAL VOLUME: 6,806
LM CT106	TOTAL WK TO DATE VOLUME:	25,107
Committed:	11,095	Delivered: 7,251

LM CT137	IA-MN	LM CT109
Neg. Cash Volume:	5,316	Dressed Formula Vol: 2,915
Live Steer Avg:	\$143.12	Steer/Heifer Avg: \$227.03
Live Heifer Avg:	\$143.00	Dressed Neg. Grid Vol: 717
Dressed Steer Avg:	\$227.32	Steer/Heifer Avg: \$224.48
Dressed Heifer Avg:	\$226.17	TOTAL VOLUME: 8,948
LM CT106	TOTAL WK TO DATE VOLUME:	32,372
Committed:	8,297	Delivered: 9,129

Thursday in Texas, Nebraska and Western Cornbelt cash trading was slow on moderate demand. In the Texas live traded steady at 142.00. In Nebraska a few live ranged from 142.00-142.50 and a few dressed at 226.00. In the Western Cornbelt a few live traded from 142.00-144.00. Wednesday in Nebraska live and dressed traded at 142.00 and 226.00. Wednesday in the Western Cornbelt live and dressed traded from 142.00-143.00 and at 226.00. Thursday in Kansas cash trading was mostly inactive on very light demand. Wednesday live traded at 142.00.

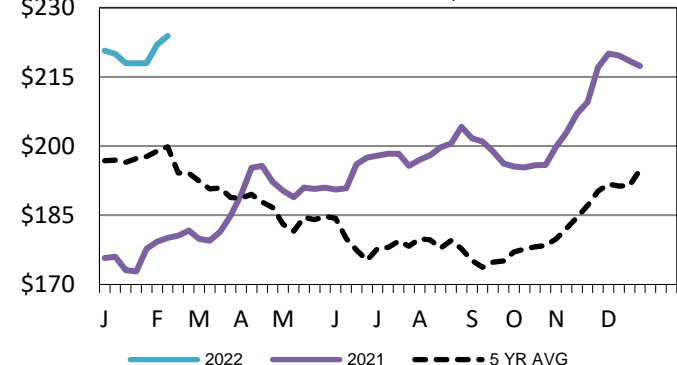
5-Area Live Steer Weighted Average

WE 2-13-22 Price = \$140.48



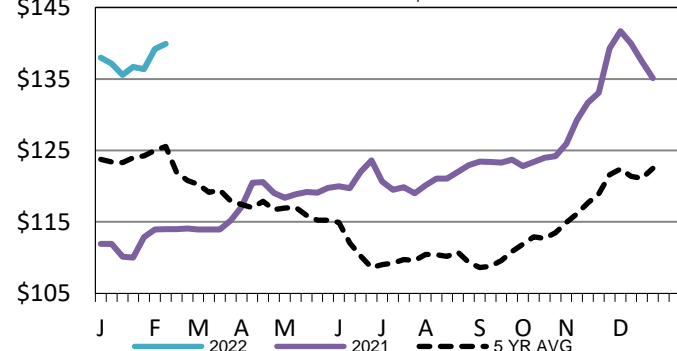
Nebraska Weekly Dressed Steer Weighted Avg

WE 2-13-22 Price = \$223.90



Kansas Weekly Live Steer Weighted Average

WE 2-13-22 Price = \$139.91



USDA Livestock, Poultry and Grain Market News

St. Joseph, Missouri

Phone: 816-676-7000

stjoe.lpgmn@ams.usda.gov