

## Daily Direct Steer and Heifer Slaughter Cattle Summary

For Trade on:

Thursday, February 03, 2022

<a href="#">LM CT100</a>	<b>5-AREA</b>	<a href="#">LM CT109</a>
<b>Neg. Cash Volume:</b>	22,759	<b>Dressed Formula Vol:</b> 41,397
Live Steer Avg:	\$139.70	Steer/Heifer Avg: \$220.42
Live Heifer Avg:	\$139.88	<b>Dressed Neg. Grid Vol:</b> 1,209
Dressed Steer Avg:	\$221.64	Steer/Heifer Avg: \$221.24
Dressed Heifer Avg:	\$221.32	<b>TOTAL VOLUME:</b> 65,365
<a href="#">LM CT106</a>	<b>TOTAL WK TO DATE VOLUME:</b>	<b>249,216</b>
<b>Committed:</b>	<b>87,131</b>	<b>Delivered:</b> 65,340

<a href="#">LM CT118</a>	<b>TX-OK-NM</b>	<a href="#">LM CT109</a>
<b>Neg. Cash Volume:</b>	7,860	<b>Dressed Formula Vol:</b> 8,414
Live Steer Avg:	\$139.85	Steer/Heifer Avg: \$217.50
Live Heifer Avg:	\$139.98	<b>Dressed Neg. Grid Vol:</b> 0
Dressed Steer Avg:	N/A	Steer/Heifer Avg: N/A
Dressed Heifer Avg:	N/A	<b>TOTAL VOLUME:</b> 16,274
<a href="#">LM CT106</a>	<b>TOTAL WK TO DATE VOLUME:</b>	<b>57,415</b>
<b>Committed:</b>	<b>19,992</b>	<b>Delivered:</b> 13,800

<a href="#">LM CT121</a>	<b>KANSAS</b>	<a href="#">LM CT109</a>
<b>Neg. Cash Volume:</b>	6,525	<b>Dressed Formula Vol:</b> 12,021
Live Steer Avg:	\$139.33	Steer/Heifer Avg: \$219.14
Live Heifer Avg:	\$139.58	<b>Dressed Neg. Grid Vol:</b> 589
Dressed Steer Avg:	N/A	Steer/Heifer Avg: \$216.69
Dressed Heifer Avg:	N/A	<b>TOTAL VOLUME:</b> 19,135
<a href="#">LM CT106</a>	<b>TOTAL WK TO DATE VOLUME:</b>	<b>61,909</b>
<b>Committed:</b>	<b>30,981</b>	<b>Delivered:</b> 17,587

<a href="#">LM CT124</a>	<b>NEBRASKA</b>	<a href="#">LM CT109</a>
<b>Neg. Cash Volume:</b>	3,422	<b>Dressed Formula Vol:</b> 14,643
Live Steer Avg:	\$139.90	Steer/Heifer Avg: \$222.03
Live Heifer Avg:	\$139.80	<b>Dressed Neg. Grid Vol:</b> 283
Dressed Steer Avg:	\$222.38	Steer/Heifer Avg: \$219.74
Dressed Heifer Avg:	\$222.66	<b>TOTAL VOLUME:</b> 18,348
<a href="#">LM CT106</a>	<b>TOTAL WK TO DATE VOLUME:</b>	<b>71,107</b>
<b>Committed:</b>	<b>21,612</b>	<b>Delivered:</b> 20,345

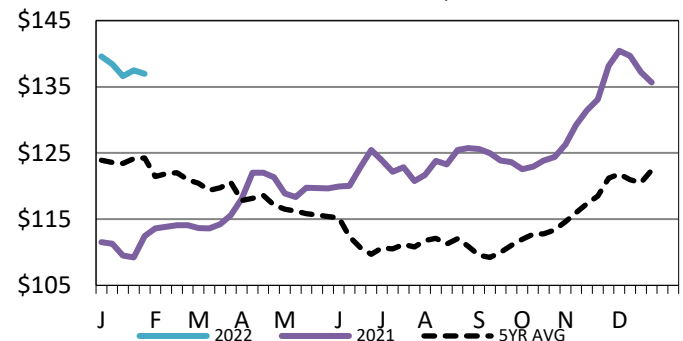
<a href="#">LM CT134</a>	<b>COLORADO</b>	<a href="#">LM CT109</a>
<b>Neg. Cash Volume:</b>	0	<b>Dressed Formula Vol:</b> 3,960
Live Steer Avg:	N/A	Steer/Heifer Avg: \$225.53
Live Heifer Avg:	N/A	<b>Dressed Neg. Grid Vol:</b> 0
Dressed Steer Avg:	N/A	Steer/Heifer Avg: N/A
Dressed Heifer Avg:	N/A	<b>TOTAL VOLUME:</b> 3,960
<a href="#">LM CT106</a>	<b>TOTAL WK TO DATE VOLUME:</b>	<b>20,536</b>
<b>Committed:</b>	<b>3,829</b>	<b>Delivered:</b> 6,460

<a href="#">LM CT137</a>	<b>IA-MN</b>	<a href="#">LM CT109</a>
<b>Neg. Cash Volume:</b>	4,952	<b>Dressed Formula Vol:</b> 2,571
Live Steer Avg:	\$140.18	Steer/Heifer Avg: \$219.48
Live Heifer Avg:	\$140.05	<b>Dressed Neg. Grid Vol:</b> 337
Dressed Steer Avg:	\$221.00	Steer/Heifer Avg: \$230.44
Dressed Heifer Avg:	\$220.66	<b>TOTAL VOLUME:</b> 7,860
<a href="#">LM CT106</a>	<b>TOTAL WK TO DATE VOLUME:</b>	<b>38,966</b>
<b>Committed:</b>	<b>10,717</b>	<b>Delivered:</b> 7,148

Thursday in Texas cash trading was moderate on light demand. Compared to last week live traded 3.00 higher at 140.00. Thursday in Kansas cash trading was slow on light demand. Compared to last week, live traded 3.00-4.00 higher from 139.00-140.00. Thursday in Nebraska and Western Cornbelt cash trading was limited on light demand. Wednesday was the last reported market in these regions. In Nebraska live and dressed traded from 138.00-140.00 and 222.00, respectively. In the Western Cornbelt live and dressed traded at 140.00 and 222.00, respectively.

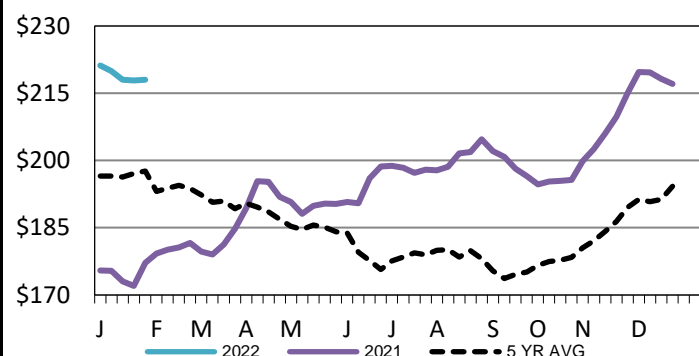
## 5-Area Live Steer Weighted Average

WE 1-30-22 Price = \$136.95



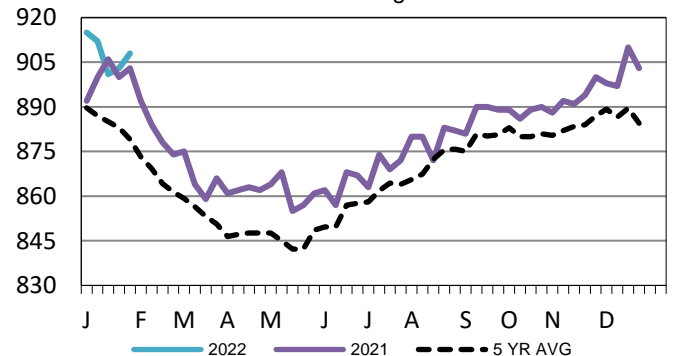
## Iowa-Minnesota Wkly Dress Steer Wtd Avg

WE 1-30-22 Price = \$217.99



## Kansas Formula Carcass Weights

WE 1-30-22 Weight = 908 lbs



## USDA Livestock, Poultry and Grain Market News

St. Joseph, Missouri

Phone: 816-676-7000

[stjoe.lpgmn@ams.usda.gov](mailto:stjoe.lpgmn@ams.usda.gov)