

## Daily Direct Steer and Heifer Slaughter Cattle Summary

For Trade on:

Thursday, January 20, 2022

<a href="#">LM CT100</a>	<b>5-AREA</b>	<a href="#">LM CT109</a>
<b>Neg. Cash Volume:</b>	14,077	<b>Dressed Formula Vol:</b> 39,297
Live Steer Avg:	\$138.09	Steer/Heifer Avg: \$219.99
Live Heifer Avg:	\$137.97	<b>Dressed Neg. Grid Vol:</b> 778
Dressed Steer Avg:	\$218.00	Steer/Heifer Avg: \$223.20
Dressed Heifer Avg:	\$218.00	<b>TOTAL VOLUME:</b> 54,152
<a href="#">LM CT106</a>	<b>TOTAL WK TO DATE VOLUME:</b>	<b>218,917</b>
<b>Committed:</b>	<b>52,351</b>	<b>Delivered:</b> 64,790

<a href="#">LM CT118</a>	<b>TX-OK-NM</b>	<a href="#">LM CT109</a>
<b>Neg. Cash Volume:</b>	213	<b>Dressed Formula Vol:</b> 10,884
Live Steer Avg:	\$137.00	Steer/Heifer Avg: \$217.14
Live Heifer Avg:	\$137.00	<b>Dressed Neg. Grid Vol:</b> 0
Dressed Steer Avg:	N/A	Steer/Heifer Avg: N/A
Dressed Heifer Avg:	N/A	<b>TOTAL VOLUME:</b> 11,097
<a href="#">LM CT106</a>	<b>TOTAL WK TO DATE VOLUME:</b>	<b>49,197</b>
<b>Committed:</b>	<b>12,631</b>	<b>Delivered:</b> 15,407

<a href="#">LM CT121</a>	<b>KANSAS</b>	<a href="#">LM CT109</a>
<b>Neg. Cash Volume:</b>	1,562	<b>Dressed Formula Vol:</b> 12,659
Live Steer Avg:	\$137.00	Steer/Heifer Avg: \$218.29
Live Heifer Avg:	N/A	<b>Dressed Neg. Grid Vol:</b> 126
Dressed Steer Avg:	\$218.00	Steer/Heifer Avg: \$224.58
Dressed Heifer Avg:	N/A	<b>TOTAL VOLUME:</b> 14,347
<a href="#">LM CT106</a>	<b>TOTAL WK TO DATE VOLUME:</b>	<b>64,501</b>
<b>Committed:</b>	<b>13,506</b>	<b>Delivered:</b> 19,117

<a href="#">LM CT124</a>	<b>NEBRASKA</b>	<a href="#">LM CT109</a>
<b>Neg. Cash Volume:</b>	3,268	<b>Dressed Formula Vol:</b> 8,973
Live Steer Avg:	\$138.00	Steer/Heifer Avg: \$223.77
Live Heifer Avg:	N/A	<b>Dressed Neg. Grid Vol:</b> 189
Dressed Steer Avg:	\$218.00	Steer/Heifer Avg: \$223.66
Dressed Heifer Avg:	\$218.00	<b>TOTAL VOLUME:</b> 12,430
<a href="#">LM CT106</a>	<b>TOTAL WK TO DATE VOLUME:</b>	<b>55,107</b>
<b>Committed:</b>	<b>9,652</b>	<b>Delivered:</b> 16,876

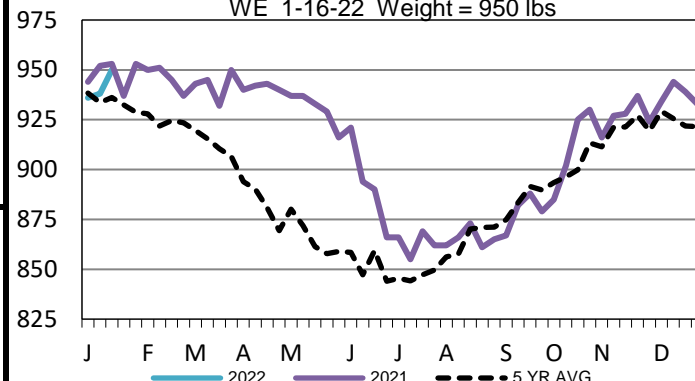
<a href="#">LM CT134</a>	<b>COLORADO</b>	<a href="#">LM CT109</a>
<b>Neg. Cash Volume:</b>	0	<b>Dressed Formula Vol:</b> 4,124
Live Steer Avg:	N/A	Steer/Heifer Avg: \$223.00
Live Heifer Avg:	N/A	<b>Dressed Neg. Grid Vol:</b> 0
Dressed Steer Avg:	N/A	Steer/Heifer Avg: N/A
Dressed Heifer Avg:	N/A	<b>TOTAL VOLUME:</b> 4,124
<a href="#">LM CT106</a>	<b>TOTAL WK TO DATE VOLUME:</b>	<b>24,466</b>
<b>Committed:</b>	<b>4,689</b>	<b>Delivered:</b> 7,001

<a href="#">LM CT137</a>	<b>IA-MN</b>	<a href="#">LM CT109</a>
<b>Neg. Cash Volume:</b>	9,034	<b>Dressed Formula Vol:</b> 2,734
Live Steer Avg:	\$138.33	Steer/Heifer Avg: \$222.37
Live Heifer Avg:	\$138.04	<b>Dressed Neg. Grid Vol:</b> 567
Dressed Steer Avg:	\$218.00	Steer/Heifer Avg: \$224.39
Dressed Heifer Avg:	\$218.00	<b>TOTAL VOLUME:</b> 12,335
<a href="#">LM CT106</a>	<b>TOTAL WK TO DATE VOLUME:</b>	<b>25,927</b>
<b>Committed:</b>	<b>11,873</b>	<b>Delivered:</b> 6,389

Thursday in the Western Cornbelt cash trading was slow to moderate with moderate demand. Live traded unevenly steady from 137.00-139.00. Tuesday was the last reported dressed market with trades at 218.00. Thursday in Kansas and Nebraska cash trading was limited on light demand. In Kansas a few live traded steady with Wednesday at 137.00. In Nebraska a few live and dressed traded steady with Wednesday from 137.00-138.00 and at 218.00. Thursday in Texas cash trading was mostly inactive on light demand. On Wednesday live purchases traded at 137.00.

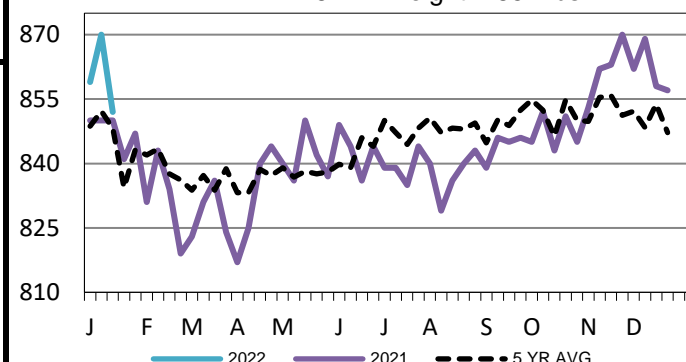
## Iowa-Minnesota Formula Carcass Weights

WE 1-16-22 Weight = 950 lbs



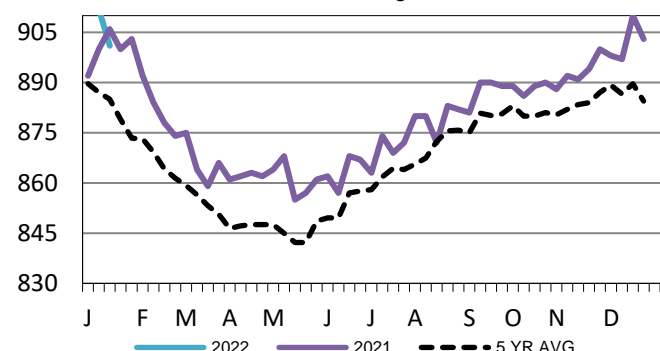
## TX-OK-NM Formula Carcass Weights

WE 1-16-22 Weight = 852 lbs



## Kansas Formula Carcass Weights

WE 1-16-22 Weight = 901 lbs



## USDA Livestock, Poultry and Grain Market News

St. Joseph, Missouri

Phone: 816-676-7000

[stjoe.lpgmn@ams.usda.gov](mailto:stjoe.lpgmn@ams.usda.gov)