

Daily Direct Steer and Heifer Slaughter Cattle Summary

For Trade on:

Wednesday, December 29, 2021

<a href="#">LM CT100</a>	5-AREA	<a href="#">LM CT109</a>
Neg. Cash Volume: 5,039	Dressed Formula Vol: 36,254	
Live Steer Avg: \$140.72	Steer/Heifer Avg: \$222.79	
Live Heifer Avg: \$140.21	Dressed Neg. Grid Vol: 287	
Dressed Steer Avg: \$221.74	Steer/Heifer Avg: \$222.88	
Dressed Heifer Avg: \$222.00	TOTAL VOLUME: 41,580	
<a href="#">LM CT106</a>	TOTAL WK TO DATE VOLUME: 175,670	
Committed: 67,932	Delivered: 67,416	

<a href="#">LM CT118</a>	TX-OK-NM	<a href="#">LM CT109</a>
Neg. Cash Volume: 0	Dressed Formula Vol: 10,046	
Live Steer Avg: N/A	Steer/Heifer Avg: \$220.57	
Live Heifer Avg: N/A	Dressed Neg. Grid Vol: 0	
Dressed Steer Avg: N/A	Steer/Heifer Avg: N/A	
Dressed Heifer Avg: N/A	TOTAL VOLUME: 10,046	
<a href="#">LM CT106</a>	TOTAL WK TO DATE VOLUME: 28,802	
Committed: 11,949	Delivered: 17,603	

<a href="#">LM CT121</a>	KANSAS	<a href="#">LM CT109</a>
Neg. Cash Volume: 170	Dressed Formula Vol: 11,211	
Live Steer Avg: N/A	Steer/Heifer Avg: \$217.93	
Live Heifer Avg: N/A	Dressed Neg. Grid Vol: 40	
Dressed Steer Avg: \$220.00	Steer/Heifer Avg: \$224.91	
Dressed Heifer Avg: N/A	TOTAL VOLUME: 11,421	
<a href="#">LM CT106</a>	TOTAL WK TO DATE VOLUME: 46,645	
Committed: 21,807	Delivered: 20,882	

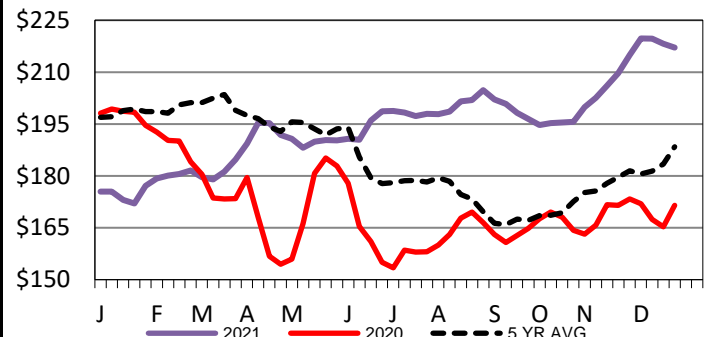
<a href="#">LM CT124</a>	NEBRASKA	<a href="#">LM CT109</a>
Neg. Cash Volume: 1147	Dressed Formula Vol: 8,493	
Live Steer Avg: \$140.39	Steer/Heifer Avg: \$225.20	
Live Heifer Avg: \$140.19	Dressed Neg. Grid Vol: 159	
Dressed Steer Avg: \$222.00	Steer/Heifer Avg: \$221.25	
Dressed Heifer Avg: \$222.00	TOTAL VOLUME: 9,799	
<a href="#">LM CT106</a>	TOTAL WK TO DATE VOLUME: 50,545	
Committed: 20,280	Delivered: 15,531	

<a href="#">LM CT134</a>	COLORADO	<a href="#">LM CT109</a>
Neg. Cash Volume: 0	Dressed Formula Vol: 5,177	
Live Steer Avg: N/A	Steer/Heifer Avg: \$234.56	
Live Heifer Avg: N/A	Dressed Neg. Grid Vol: 0	
Dressed Steer Avg: N/A	Steer/Heifer Avg: N/A	
Dressed Heifer Avg: N/A	TOTAL VOLUME: 5,177	
<a href="#">LM CT106</a>	TOTAL WK TO DATE VOLUME: 13,941	
Committed: 8,919	Delivered: 4,740	

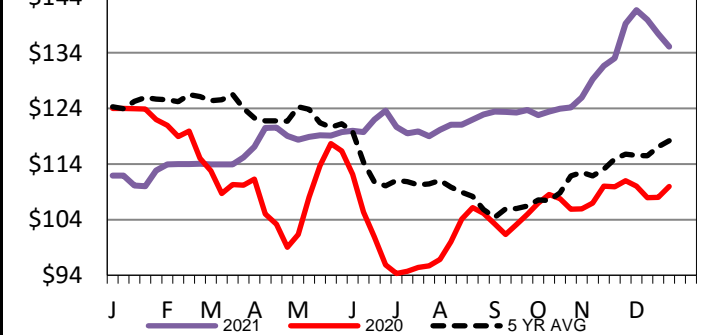
<a href="#">LM CT137</a>	IA-MN	<a href="#">LM CT109</a>
Neg. Cash Volume: 3,722	Dressed Formula Vol: 1,524	
Live Steer Avg: \$140.73	Steer/Heifer Avg: \$220.75	
Live Heifer Avg: \$140.23	Dressed Neg. Grid Vol: 205	
Dressed Steer Avg: \$223.93	Steer/Heifer Avg: \$225.24	
Dressed Heifer Avg: \$222.00	TOTAL VOLUME: 5,451	
<a href="#">LM CT106</a>	TOTAL WK TO DATE VOLUME: 36,306	
Committed: 4,977	Delivered: 8,660	

For Wednesday negotiated cash trading was limited on light demand in Nebraska and the Western Cornbelt. Not enough purchases for a market trend. On Tuesday in Nebraska and the Western Cornbelt live and dressed purchases traded at 140.00 and from 220.00-222.00, respectively. Negotiated cash trading was at a standstill in the Southern Plains. Last week in the Southern Plains live purchases traded at 135.00.

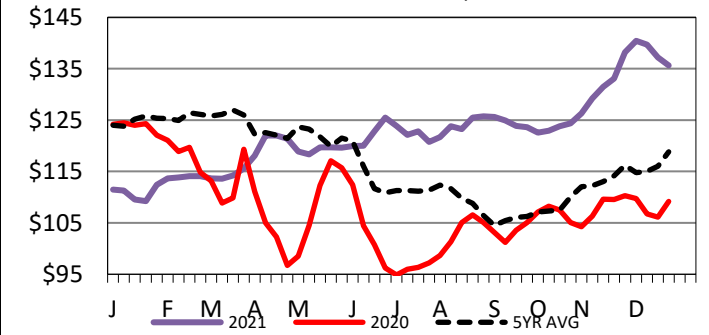
Iowa-Minnesota Wkly Dress Steer Wtd Avg  
WE 12-26-21 Price = \$217.11



Kansas Weekly Live Steer Weighted Average  
WE 12-26-21 Price = \$135.13



5-Area Live Steer Weighted Average  
WE 12-26-21 Price = \$135.64



USDA Livestock, Poultry and Grain Market News

St. Joseph, Missouri

Phone: 816-676-7000

[stjoe.lpgmn@ams.usda.gov](mailto:stjoe.lpgmn@ams.usda.gov)