

## Daily Direct Steer and Heifer Slaughter Cattle Summary

For Trade on:

Monday, December 20, 2021

<a href="#">LM CT100</a>	<b>5-AREA</b>	<a href="#">LM CT109</a>
<b>Neg. Cash Volume:</b>	3,586	<b>Dressed Formula Vol:</b> 57,817
Live Steer Avg:	\$135.00	Steer/Heifer Avg: \$223.86
Live Heifer Avg:	\$135.00	<b>Dressed Neg. Grid Vol:</b> 3,809
Dressed Steer Avg:	N/A	Steer/Heifer Avg: \$222.34
Dressed Heifer Avg:	N/A	<b>TOTAL VOLUME:</b> 65,212
<a href="#">LM CT106</a>	<b>TOTAL WK TO DATE VOLUME:</b>	65,212
<b>Committed:</b>	73,651	<b>Delivered:</b> 69,637

<a href="#">LM CT118</a>	<b>TX-OK-NM</b>	<a href="#">LM CT109</a>
<b>Neg. Cash Volume:</b>	0	<b>Dressed Formula Vol:</b> 17,687
Live Steer Avg:	N/A	Steer/Heifer Avg: \$223.11
Live Heifer Avg:	N/A	<b>Dressed Neg. Grid Vol:</b> 242
Dressed Steer Avg:	N/A	Steer/Heifer Avg: \$218.05
Dressed Heifer Avg:	N/A	<b>TOTAL VOLUME:</b> 17,929
<a href="#">LM CT106</a>	<b>TOTAL WK TO DATE VOLUME:</b>	17,929
<b>Committed:</b>	29,945	<b>Delivered:</b> 15,415

<a href="#">LM CT121</a>	<b>KANSAS</b>	<a href="#">LM CT109</a>
<b>Neg. Cash Volume:</b>	80	<b>Dressed Formula Vol:</b> 22,711
Live Steer Avg:	N/A	Steer/Heifer Avg: \$223.69
Live Heifer Avg:	N/A	<b>Dressed Neg. Grid Vol:</b> 1,313
Dressed Steer Avg:	N/A	Steer/Heifer Avg: \$224.04
Dressed Heifer Avg:	N/A	<b>TOTAL VOLUME:</b> 24,104
<a href="#">LM CT106</a>	<b>TOTAL WK TO DATE VOLUME:</b>	24,104
<b>Committed:</b>	18,091	<b>Delivered:</b> 20,505

<a href="#">LM CT124</a>	<b>NEBRASKA</b>	<a href="#">LM CT109</a>
<b>Neg. Cash Volume:</b>	3391	<b>Dressed Formula Vol:</b> 10,271
Live Steer Avg:	\$135.00	Steer/Heifer Avg: \$225.01
Live Heifer Avg:	\$135.00	<b>Dressed Neg. Grid Vol:</b> 1,189
Dressed Steer Avg:	N/A	Steer/Heifer Avg: \$222.04
Dressed Heifer Avg:	N/A	<b>TOTAL VOLUME:</b> 14,851
<a href="#">LM CT106</a>	<b>TOTAL WK TO DATE VOLUME:</b>	14,851
<b>Committed:</b>	14,058	<b>Delivered:</b> 15,418

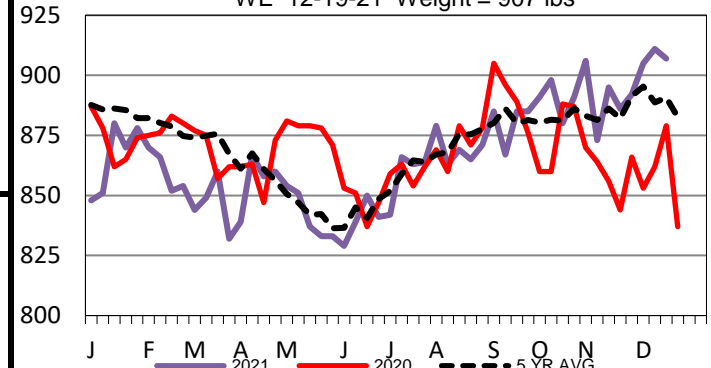
<a href="#">LM CT134</a>	<b>COLORADO</b>	<a href="#">LM CT109</a>
<b>Neg. Cash Volume:</b>	0	<b>Dressed Formula Vol:</b> 6,080
Live Steer Avg:	N/A	Steer/Heifer Avg: \$224.22
Live Heifer Avg:	N/A	<b>Dressed Neg. Grid Vol:</b> 243
Dressed Steer Avg:	N/A	Steer/Heifer Avg: \$223.17
Dressed Heifer Avg:	N/A	<b>TOTAL VOLUME:</b> 6,323
<a href="#">LM CT106</a>	<b>TOTAL WK TO DATE VOLUME:</b>	6,323
<b>Committed:</b>	2,137	<b>Delivered:</b> 8,529

<a href="#">LM CT137</a>	<b>IA-MN</b>	<a href="#">LM CT109</a>
<b>Neg. Cash Volume:</b>	115	<b>Dressed Formula Vol:</b> 1,225
Live Steer Avg:	N/A	Steer/Heifer Avg: \$227.17
Live Heifer Avg:	N/A	<b>Dressed Neg. Grid Vol:</b> 859
Dressed Steer Avg:	N/A	Steer/Heifer Avg: \$221.67
Dressed Heifer Avg:	N/A	<b>TOTAL VOLUME:</b> 2,199
<a href="#">LM CT106</a>	<b>TOTAL WK TO DATE VOLUME:</b>	2,199
<b>Committed:</b>	9,420	<b>Delivered:</b> 9,770

For Monday cash trading in Nebraska was limited on light demand. Compared to last week a few early live purchases traded 1.00-3.00 lower at 135.00. Last week dressed purchases traded at 218.00. For Monday in the Southern Plains and Western Cornbelt negotiated cash trading was mostly inactive on light demand. Not enough purchases in these regions for a market trend. Last week in the Texas Panhandle live purchases traded at 136.00. For the prior week in Kansas live purchases traded from 136.00-138.00. For the previous week in the Western Cornbelt live and dressed purchases traded at 138.00 and from 217.00-218.00, respectively.

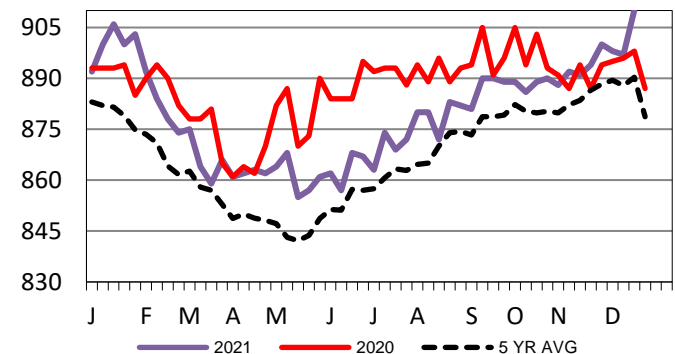
## Colorado Formula Carcass Weights

WE 12-19-21 Weight = 907 lbs



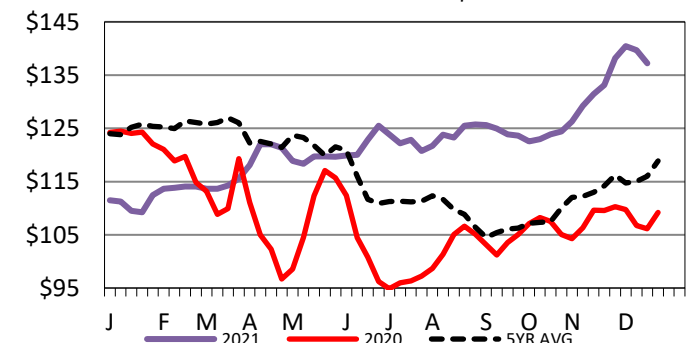
## Kansas Formula Carcass Weights

WE 12-19-21 Weight = 910 lbs



## 5-Area Live Steer Weighted Average

WE 12-19-21 Price = \$137.19



## USDA Livestock, Poultry and Grain Market News

St. Joseph, Missouri

Phone: 816-676-7000

[stjoe.lpgmn@ams.usda.gov](mailto:stjoe.lpgmn@ams.usda.gov)