

## Daily Direct Steer and Heifer Slaughter Cattle Summary

For Trade on:

Friday, December 17, 2021

<a href="#">LM CT100</a>	<b>5-AREA</b>	<a href="#">LM CT109</a>
<b>Neg. Cash Volume:</b>	3,614	<b>Dressed Formula Vol:</b> 46,039
Live Steer Avg:	\$137.24	Steer/Heifer Avg: \$225.06
Live Heifer Avg:	\$136.00	<b>Dressed Neg. Grid Vol:</b> 1,485
Dressed Steer Avg:	\$218.29	Steer/Heifer Avg: \$224.22
Dressed Heifer Avg:	\$217.00	<b>TOTAL VOLUME:</b> 51,138
<a href="#">LM CT106</a>	<b>TOTAL WK TO DATE VOLUME:</b>	<b>254,138</b>
<b>Committed:</b>	<b>53,403</b>	<b>Delivered:</b> 101,621

<a href="#">LM CT118</a>	<b>TX-OK-NM</b>	<a href="#">LM CT109</a>
<b>Neg. Cash Volume:</b>	586	<b>Dressed Formula Vol:</b> 11,290
Live Steer Avg:	\$136.00	Steer/Heifer Avg: \$221.98
Live Heifer Avg:	\$136.00	<b>Dressed Neg. Grid Vol:</b> 0
Dressed Steer Avg:	N/A	Steer/Heifer Avg: N/A
Dressed Heifer Avg:	N/A	<b>TOTAL VOLUME:</b> 11,876
<a href="#">LM CT106</a>	<b>TOTAL WK TO DATE VOLUME:</b>	<b>62,893</b>
<b>Committed:</b>	<b>10,035</b>	<b>Delivered:</b> 25,830

<a href="#">LM CT121</a>	<b>KANSAS</b>	<a href="#">LM CT109</a>
<b>Neg. Cash Volume:</b>	0	<b>Dressed Formula Vol:</b> 17,750
Live Steer Avg:	N/A	Steer/Heifer Avg: \$225.06
Live Heifer Avg:	N/A	<b>Dressed Neg. Grid Vol:</b> 82
Dressed Steer Avg:	N/A	Steer/Heifer Avg: \$224.57
Dressed Heifer Avg:	N/A	<b>TOTAL VOLUME:</b> 17,832
<a href="#">LM CT106</a>	<b>TOTAL WK TO DATE VOLUME:</b>	<b>74,382</b>
<b>Committed:</b>	<b>17,287</b>	<b>Delivered:</b> 28,798

<a href="#">LM CT124</a>	<b>NEBRASKA</b>	<a href="#">LM CT109</a>
<b>Neg. Cash Volume:</b>	566	<b>Dressed Formula Vol:</b> 8,452
Live Steer Avg:	N/A	Steer/Heifer Avg: \$228.69
Live Heifer Avg:	N/A	<b>Dressed Neg. Grid Vol:</b> 287
Dressed Steer Avg:	\$218.00	Steer/Heifer Avg: \$227.38
Dressed Heifer Avg:	N/A	<b>TOTAL VOLUME:</b> 9,305
<a href="#">LM CT106</a>	<b>TOTAL WK TO DATE VOLUME:</b>	<b>62,471</b>
<b>Committed:</b>	<b>8,429</b>	<b>Delivered:</b> 24,251

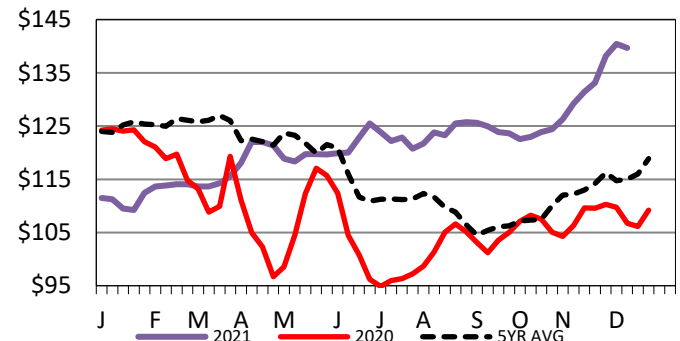
<a href="#">LM CT134</a>	<b>COLORADO</b>	<a href="#">LM CT109</a>
<b>Neg. Cash Volume:</b>	358	<b>Dressed Formula Vol:</b> 5,599
Live Steer Avg:	\$136.00	Steer/Heifer Avg: \$226.57
Live Heifer Avg:	N/A	<b>Dressed Neg. Grid Vol:</b> 0
Dressed Steer Avg:	N/A	Steer/Heifer Avg: N/A
Dressed Heifer Avg:	N/A	<b>TOTAL VOLUME:</b> 5,957
<a href="#">LM CT106</a>	<b>TOTAL WK TO DATE VOLUME:</b>	<b>26,804</b>
<b>Committed:</b>	<b>10,007</b>	<b>Delivered:</b> 7,867

<a href="#">LM CT137</a>	<b>IA-MN</b>	<a href="#">LM CT109</a>
<b>Neg. Cash Volume:</b>	2,104	<b>Dressed Formula Vol:</b> 3,058
Live Steer Avg:	\$137.86	Steer/Heifer Avg: \$223.77
Live Heifer Avg:	N/A	<b>Dressed Neg. Grid Vol:</b> 1,116
Dressed Steer Avg:	\$219.00	Steer/Heifer Avg: \$223.38
Dressed Heifer Avg:	\$217.00	<b>TOTAL VOLUME:</b> 6,278
<a href="#">LM CT106</a>	<b>TOTAL WK TO DATE VOLUME:</b>	<b>28,456</b>
<b>Committed:</b>	<b>7,645</b>	<b>Delivered:</b> 14,875

For Friday negotiated cash trading was mostly inactive on light demand in the Texas Panhandle, Nebraska, Colorado, and the Western Cornbelt. Not enough purchases in these regions for a market trend. Negotiated cash trading was at a standstill Kansas. The last reported market in Kansas was on Tuesday with live purchases at 138.00. On Wednesday in the Texas Panhandle live purchases traded at 136.00. In Nebraska on Wednesday, dressed purchases traded at 218.00. The last reported live market in Nebraska was last week from 138.00- 140.00. The last reported market in Colorado was last week with live purchases at 140.00. Last week in the Western Cornbelt live and dressed traded from 138.00-140.00 and from 218.00-220.00, respectively.

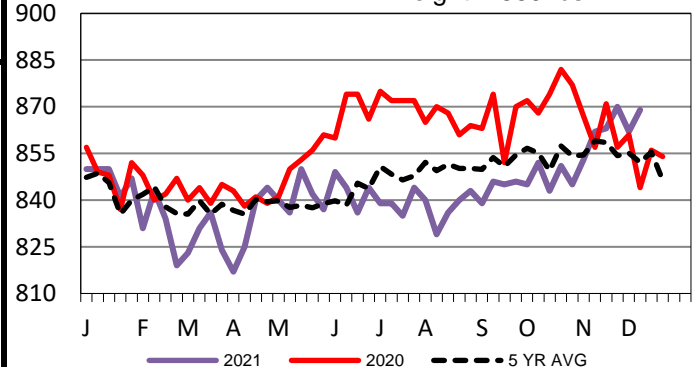
## 5-Area Live Steer Weighted Average

WE 12-12-21 Price = \$139.69



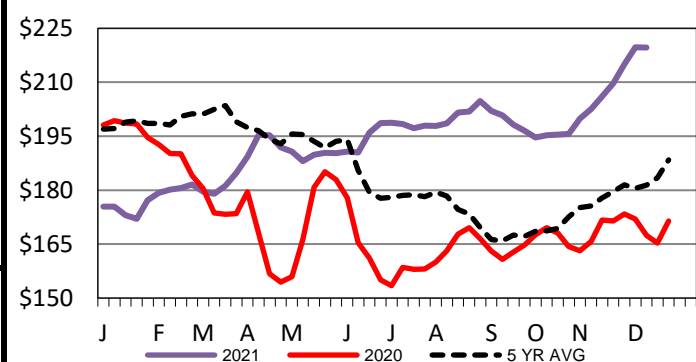
## TX-OK-NM Formula Carcass Weights

WE 12-12-21 Weight = 869 lbs



## Iowa-Minnesota Wkly Dress Steer Wtd Avg

WE 12-12-21 Price = \$219.68



## USDA Livestock, Poultry and Grain Market News

St. Joseph, Missouri

Phone: 816-676-7000

[stjoe.lpgmn@ams.usda.gov](mailto:stjoe.lpgmn@ams.usda.gov)