

Daily Direct Steer and Heifer Slaughter Cattle Summary

For Trade on:

Wednesday, December 15, 2021

LM CT100	5-AREA	LM CT109	
Neg. Cash Volume:	22,480	Dressed Formula Vol:	33,036
Live Steer Avg:	\$136.84	Steer/Heifer Avg:	\$229.21
Live Heifer Avg:	\$137.02	Dressed Neg. Grid Vol:	2,793
Dressed Steer Avg:	\$218.15	Steer/Heifer Avg:	\$220.27
Dressed Heifer Avg:	\$218.08	TOTAL VOLUME:	58,309
LM CT106	TOTAL WK TO DATE VOLUME:		152,779
Committed:	70,659	Delivered:	63,324

LM CT118	TX-OK-NM	LM CT109	
Neg. Cash Volume:	4,345	Dressed Formula Vol:	10,906
Live Steer Avg:	\$135.99	Steer/Heifer Avg:	\$224.38
Live Heifer Avg:	\$136.11	Dressed Neg. Grid Vol:	77
Dressed Steer Avg:	N/A	Steer/Heifer Avg:	\$217.64
Dressed Heifer Avg:	N/A	TOTAL VOLUME:	15,328
LM CT106	TOTAL WK TO DATE VOLUME:		35,268
Committed:	13,643	Delivered:	15,416

LM CT121	KANSAS	LM CT109	
Neg. Cash Volume:	860	Dressed Formula Vol:	7,160
Live Steer Avg:	\$136.51	Steer/Heifer Avg:	\$226.64
Live Heifer Avg:	\$136.00	Dressed Neg. Grid Vol:	42
Dressed Steer Avg:	N/A	Steer/Heifer Avg:	\$225.44
Dressed Heifer Avg:	\$218.00	TOTAL VOLUME:	8,062
LM CT106	TOTAL WK TO DATE VOLUME:		45,666
Committed:	10,132	Delivered:	12,245

LM CT124	NEBRASKA	LM CT109	
Neg. Cash Volume:	9041	Dressed Formula Vol:	8,159
Live Steer Avg:	\$136.99	Steer/Heifer Avg:	\$231.23
Live Heifer Avg:	\$137.00	Dressed Neg. Grid Vol:	1,679
Dressed Steer Avg:	\$218.16	Steer/Heifer Avg:	\$219.84
Dressed Heifer Avg:	\$218.25	TOTAL VOLUME:	18,879
LM CT106	TOTAL WK TO DATE VOLUME:		40,126
Committed:	26,000	Delivered:	15,689

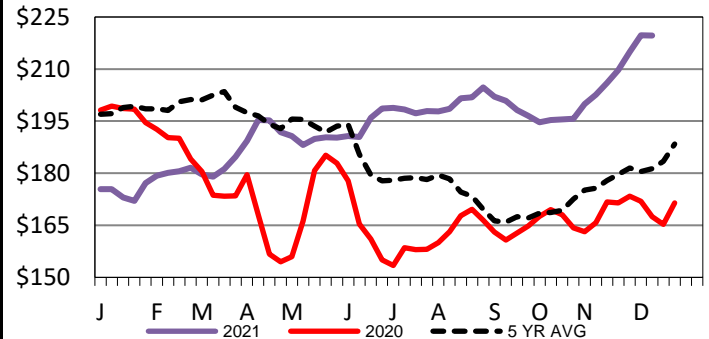
LM CT134	COLORADO	LM CT109	
Neg. Cash Volume:	0	Dressed Formula Vol:	4,778
Live Steer Avg:	N/A	Steer/Heifer Avg:	\$243.43
Live Heifer Avg:	N/A	Dressed Neg. Grid Vol:	225
Dressed Steer Avg:	N/A	Steer/Heifer Avg:	\$218.58
Dressed Heifer Avg:	N/A	TOTAL VOLUME:	5,003
LM CT106	TOTAL WK TO DATE VOLUME:		14,259
Committed:	5,176	Delivered:	7,043

LM CT137	IA-MN	LM CT109	
Neg. Cash Volume:	8,234	Dressed Formula Vol:	2,033
Live Steer Avg:	\$137.81	Steer/Heifer Avg:	\$222.62
Live Heifer Avg:	\$137.65	Dressed Neg. Grid Vol:	808
Dressed Steer Avg:	\$218.13	Steer/Heifer Avg:	\$222.22
Dressed Heifer Avg:	\$217.53	TOTAL VOLUME:	11,075
LM CT106	TOTAL WK TO DATE VOLUME:		17,987
Committed:	15,708	Delivered:	12,931

For Wednesday negotiated cash trading was slow on light demand in the Texas Panhandle with live 4.00 lower compared to last week at 136.00. In Nebraska, negotiated cash trading was limited on light demand with dressed 2.00 lower compared to last week at 218.00. Not enough live for a market trend. Last week in Nebraska live purchases traded from 138.00-140.00. Negotiated cash trading was limited on light demand in the Western Cornbelt with a few live purchases at 138.00, however not enough for a market trend. Last week in the Western Cornbelt live and dressed traded from 138.00-140.00 and from 218.00-220.00, respectively. Negotiated cash trading was mostly inactive on very light demand in Kansas and at a standstill in Colorado. On Tuesday in Kansas, live traded at 138.00. The last reported market in Colorado was last week with live at 140.00.

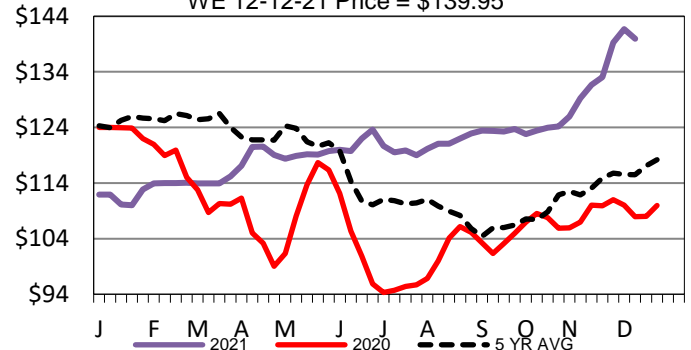
Iowa-Minnesota Wkly Dress Steer Wtd Avg

WE 12-12-21 Price = \$219.68



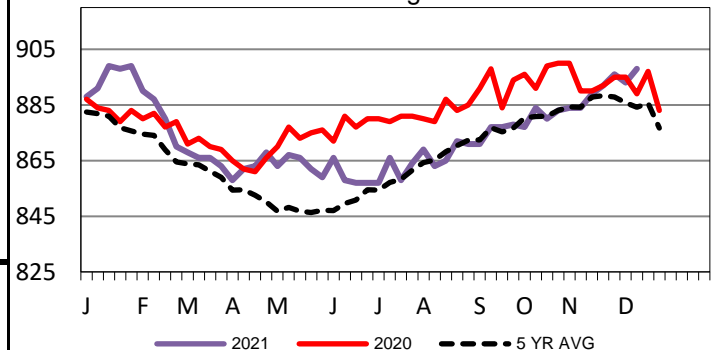
Kansas Weekly Live Steer Weighted Average

WE 12-12-21 Price = \$139.95



5-Area Formula Carcass Weight

WE 12-12-21 Weight = 898 lbs



USDA Livestock, Poultry and Grain Market News

St. Joseph, Missouri

Phone: 816-676-7000

stjoe.lpgmn@ams.usda.gov