

Daily Direct Steer and Heifer Slaughter Cattle Summary

For Trade on:

Tuesday, December 14, 2021

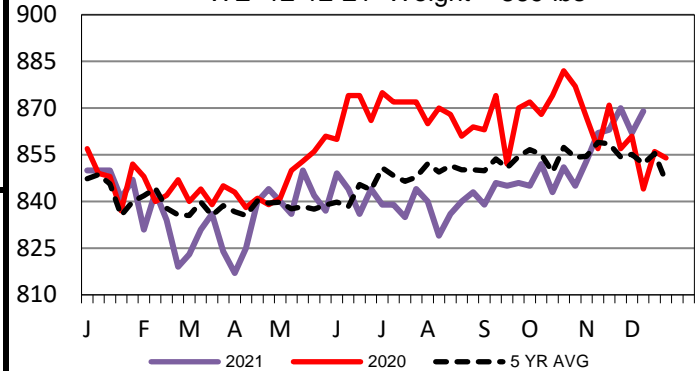
LM CT100	5-AREA	LM CT109
Neg. Cash Volume:	8,284	Dressed Formula Vol: 30,348
Live Steer Avg:	\$138.00	Steer/Heifer Avg: \$226.37
Live Heifer Avg:	\$137.91	Dressed Neg. Grid Vol: 2,036
Dressed Steer Avg:	\$219.68	Steer/Heifer Avg: \$216.89
Dressed Heifer Avg:	\$219.28	TOTAL VOLUME: 40,668
LM CT106	TOTAL WK TO DATE VOLUME:	94,470
Committed:	70,711	Delivered: 69,863

For Tuesday cash trading in Kansas was slow on light demand. Compared to last week live traded 2.00 lower at 138.00, on a light test. In the Texas Panhandle, Nebraska and Western Cornbelt cash trading was limited on light demand. In Colorado cash trading was at a standstill. Not enough purchases in these regions for a market trend. Last week live in the Texas Panhandle and Colorado traded at 140.00. In Nebraska last week live and dressed traded from 138.00-140.00 and at 220.00, respectively. For the prior week in the Western Cornbelt live and dressed traded from 138.00-140.00 and from 218.00- 220.00, respectively.

LM CT118	TX-OK-NM	LM CT109
Neg. Cash Volume:	359	Dressed Formula Vol: 9,939
Live Steer Avg:	\$138.00	Steer/Heifer Avg: \$225.92
Live Heifer Avg:	\$137.45	Dressed Neg. Grid Vol: 123
Dressed Steer Avg:	N/A	Steer/Heifer Avg: \$213.77
Dressed Heifer Avg:	N/A	TOTAL VOLUME: 10,421
LM CT106	TOTAL WK TO DATE VOLUME:	19,940
Committed:	23,668	Delivered: 16,107

TX-OK-NM Formula Carcass Weights

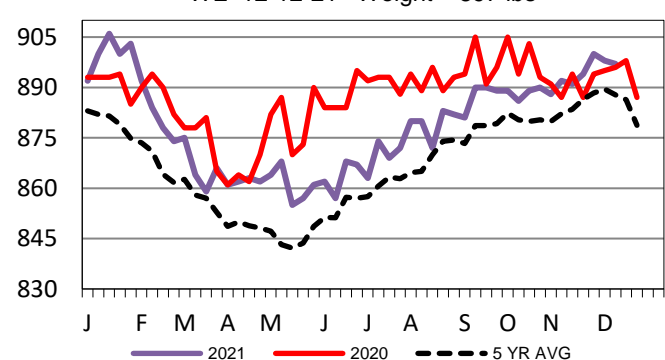
WE 12-12-21 Weight = 869 lbs



LM CT121	KANSAS	LM CT109
Neg. Cash Volume:	3,859	Dressed Formula Vol: 8,958
Live Steer Avg:	\$138.00	Steer/Heifer Avg: \$227.41
Live Heifer Avg:	\$138.00	Dressed Neg. Grid Vol: 1,076
Dressed Steer Avg:	N/A	Steer/Heifer Avg: \$214.92
Dressed Heifer Avg:	N/A	TOTAL VOLUME: 13,893
LM CT106	TOTAL WK TO DATE VOLUME:	37,604
Committed:	26,894	Delivered: 19,919

Kansas Formula Carcass Weights

WE 12-12-21 Weight = 897 lbs

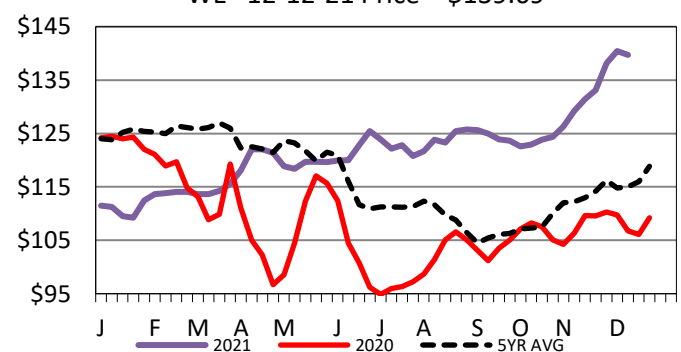


LM CT124	NEBRASKA	LM CT109
Neg. Cash Volume:	3209	Dressed Formula Vol: 6,129
Live Steer Avg:	N/A	Steer/Heifer Avg: \$227.25
Live Heifer Avg:	\$138.00	Dressed Neg. Grid Vol: 451
Dressed Steer Avg:	\$219.68	Steer/Heifer Avg: \$220.89
Dressed Heifer Avg:	\$220.00	TOTAL VOLUME: 9,789
LM CT106	TOTAL WK TO DATE VOLUME:	21,247
Committed:	12,916	Delivered: 16,774

LM CT134	COLORADO	LM CT109
Neg. Cash Volume:	0	Dressed Formula Vol: 4,094
Live Steer Avg:	N/A	Steer/Heifer Avg: \$224.00
Live Heifer Avg:	N/A	Dressed Neg. Grid Vol: 195
Dressed Steer Avg:	N/A	Steer/Heifer Avg: \$222.77
Dressed Heifer Avg:	N/A	TOTAL VOLUME: 4,289
LM CT106	TOTAL WK TO DATE VOLUME:	9,256
Committed:	3,216	Delivered: 7,874

5-Area Live Steer Weighted Average

WE 12-12-21 Price = \$139.69



LM CT137	IA-MN	LM CT109
Neg. Cash Volume:	857	Dressed Formula Vol: 1,420
Live Steer Avg:	\$138.00	Steer/Heifer Avg: \$226.69
Live Heifer Avg:	\$138.00	Dressed Neg. Grid Vol: 271
Dressed Steer Avg:	N/A	Steer/Heifer Avg: \$216.41
Dressed Heifer Avg:	\$218.00	TOTAL VOLUME: 2,548
LM CT106	TOTAL WK TO DATE VOLUME:	6,912
Committed:	4,017	Delivered: 9,189

USDA Livestock, Poultry and Grain Market News

St. Joseph, Missouri

Phone: 816-676-7000

stjoe.lpgmn@ams.usda.gov